

Allgemeine Informationen

| | | |
|--|---|---|
| Katalog-Nr.: 66352-1-Ig | GenBank-Zugangsnummer: BC001731 | Reinigungsmethode: Protein-A-Reinigung |
| Größe: 150ul , Konzentration: 900 µg/ml von Nanodrop und 740 µg/ml durch die Bradford-Methode mit BSA als Standard; | GeneID (NCBI): 4076 | CloneNo.: 6B10F11 |
| Wirt: Maus | Vollständiger Name: cell cycle associated protein 1 | Empfohlene Verdünnungen: WB 1:5000-1:50000 IHC 1:500-1:2000 IF 1:50-1:500 |
| Isotyp: IgG1 | Berechnete Masse: 78 kDa | |
| Immunogen Katalognummer: AG7413 | Beobachtete Masse: 116 kDa | |

Anwendungen

| | |
|--|---|
| Geprüfte Anwendungen: FC, IF, IHC, WB, ELISA | Positivkontrollen: |
| Getestete Reaktivität: Human, Maus, Ratte | WB : LNCaP-Zellen, HEK-293-Zellen, HeLa-Zellen, HepG2-Zellen, Jurkat-Zellen, K-562-Zellen, NIH/3T3- Zellen |
| Hinweis-IHC: Antigendemaskierung mit TE- Puffer pH 9,0 empfohlen. (*) Wahlweise kann die Antigendemaskierung auch mit Citratpuffer pH 6,0 erfolgen. | IHC : humanes Mammakarzinomgewebe, humanes Prostatakarzinomgewebe, Maushirngewebe |
| | IF : HeLa-Zellen, |

Hintergrundinformationen

CAPRIN1(Caprin-1) is a cytoplasmic phosphoprotein which may regulate the transport and translation of mRNAs of proteins involved in synaptic plasticity in neurons and cell proliferation and migration in multiple cell types. Its levels, except in the brain, are tightly correlated with cellular proliferation. Suppression of expression of human Caprin-1 resulted in slowing of the proliferation rate, which suggests its essential for normal cellular proliferation.

Lagerung

Lagerungsbedingungen:
Bei -20°C lagern. Nach dem Versand ein Jahr lang stabil
Lagerungspuffer:
PBS mit 0.02% Natriumazid und 50% Glycerin pH 7.3.
Aliquotieren ist nicht notwendig bei -20°C Lagerung

*** 20ul-Größen enthalten 0.1% BSA

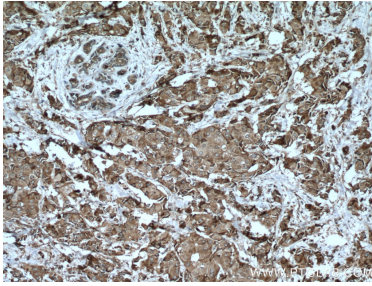
For technical support and original validation data for this product please contact:

T: 1 (888) 4PTGLAB (1-888-478-4522) (toll free
in USA), or 1(312) 455-8498 (outside USA)

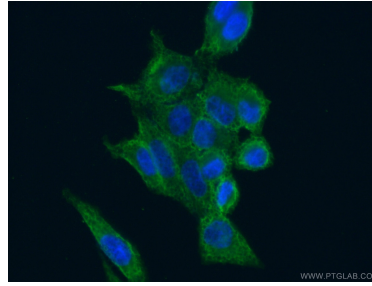
E: proteintech@ptglab.com
W: ptglab.com

This product is exclusively available under Proteintech Group brand and is not available to purchase from any other manufacturer.

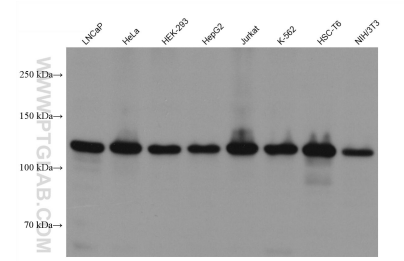
Ausgewählte Validierungsdaten



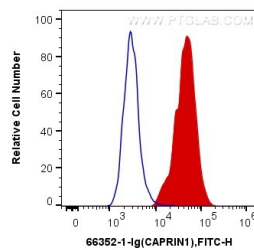
Immunohistochemical analysis of paraffin-embedded human breast cancer tissue slide using 66352-1-Ig (CAPRIN1 antibody) at dilution of 1:1000 (under 10x lens). Heat mediated antigen retrieval with Tris-EDTA buffer (pH 9.0).



Immunofluorescent analysis of (4% PFA) fixed HeLa cells using 66352-1-Ig (CAPRIN1 antibody) at dilution of 1:100 and Alexa Fluor 488-conjugated AffiniPure Goat Anti-Mouse IgG(H+L).



Various lysates were subjected to SDS PAGE followed by western blot with 66352-1-Ig (CAPRIN1 antibody) at dilution of 1:20000 incubated at room temperature for 1.5 hours.



1X10⁶ NIH/3T3 cells were intracellularly stained with 0.2 ug Anti-Human CAPRIN1 (66352-1-Ig, Clone:6B10F11) (red), or 0.2 ug Control Antibody. Cells were fixed with 4% PFA and permeabilized with Flow Cytometry Perm Buffer (PF00011-C).