

## Allgemeine Informationen

<b>Katalog-Nr.:</b> 66353-1-Ig	<b>GenBank-Zugangsnummer:</b> BC032851	<b>Reinigungsmethode:</b> Protein-A-Reinigung
<b>Größe:</b> 150ul, Konzentration: 1500 µg/ml von868 Nanodrop und 1000 µg/ml durch die Bradford-Methode mit BSA als Standard;	<b>GeneID (NCBI):</b> 2D3A2	<b>CloneNo.:</b> 2D3A2
<b>Wirt:</b> Maus	<b>Vollständiger Name:</b> Cas-Br-M (murine) ecotropic retroviral transforming sequence b	<b>Empfohlene Verdünnungen:</b> WB 1:500-1:2000 IHC 1:100-1:400 IF 1:50-1:500
<b>Isotyp:</b> IgG3	<b>Berechnete Masse:</b> 982 aa, 109 kDa	
<b>Immunogen Katalognummer:</b> AG18757	<b>Beobachtete Masse:</b> 110 kDa	

## Anwendungen

### Geprüfte Anwendungen:

IF, IHC, WB,ELISA

### Getestete Reaktivität:

Hausschwein, Human, Maus, Ratte

**Hinweis-IHC: Antigenmaskierung mit TE-Puffer pH 9,0 empfohlen. (\*) Wahlweise kann die Antigenmaskierung auch mit Citratpuffer pH 6,0 erfolgen.**

### Positivkontrollen:

WB : RAW 264.7-Zellen, Rattenherzgewebe

IHC : humanes Herzgewebe, humanes Hodengewebe

IF : RAW 264.7-Zellen,

## Hintergrundinformationen

CBLB(E3 ubiquitin-protein ligase CBL-B) is also known as RNF56 and plays a necessary role to prevent the inappropriate activation of NF-B in response to lipopolysaccharide and to polymicrobial sepsis. CBLB can be phosphorylated on tyrosine and serine residues upon TCR or BCR activation, and upon various types of cell stimulation.. It also has a crucial role in the prevention of chronic inflammation and autoimmunity. This protein has 3 isoforms produced by alternative splicing.

## Lagerung

### Lagerungsbedingungen:

Bei -20°C lagern. Nach dem Versand ein Jahr lang stabil

### Lagerungspuffer:

PBS mit 0.02% Natriumazid und 50% Glycerin pH 7.3.

Aliquotieren ist nicht notwendig bei -20°C Lagerung

**\*\*\* 20ul-Größen enthalten 0.1% BSA**

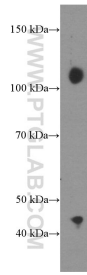
For technical support and original validation data for this product please contact:

T: 1 (888) 4PTGLAB (1-888-478-4522) (toll free  
in USA), or 1(312) 455-8498 (outside USA)

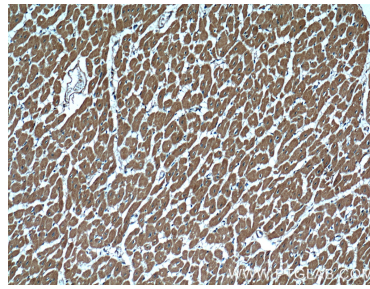
E: [proteintech@ptglab.com](mailto:proteintech@ptglab.com)  
W: [ptglab.com](http://ptglab.com)

**This product is exclusively available under Proteintech Group brand and is not available to purchase from any other manufacturer.**

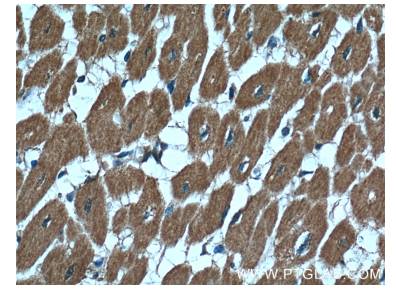
## Ausgewählte Validierungsdaten



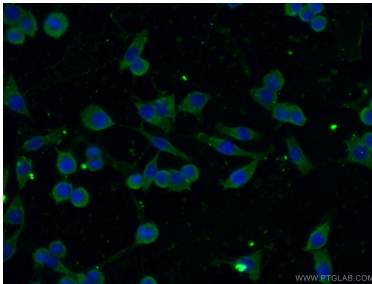
RAW 264.7 cells were subjected to SDS PAGE followed by western blot with 66353-1-Ig (CBLB Antibody) at dilution of 1:1000 incubated at room temperature for 1.5 hours.



Immunohistochemical analysis of paraffin-embedded human heart tissue slide using 66353-1-Ig (CBLB Antibody) at dilution of 1:200 (under 10x lens).



Immunohistochemical analysis of paraffin-embedded human heart tissue slide using 66353-1-Ig (CBLB Antibody) at dilution of 1:200 (under 40x lens).



Immunofluorescent analysis of (-20°C Ethanol) fixed RAW 264.7 cells using 66353-1-Ig (CBLB antibody) at dilution of 1:100 and Alexa Fluor 488-conjugated AffiniPure Goat Anti-Mouse IgG(H+L).