

Nur für Forschungszwecke

BRE Monoklonaler Antikörper

Katalog-Nr.:66356-1-Ig



Allgemeine Informationen

Katalog-Nr.: 66356-1-Ig	GenBank-Zugangsnummer: BC001251	Reinigungsmethode: Protein-A-Reinigung
Größe: 150ul, Konzentration: 1800 µg/ml von9577 Nanodrop und 1000 µg/ml durch die Bradford-Methode mit BSA als Standard;	GeneID (NCBI): Vollständiger Name: brain and reproductive organ- expressed (TNFRSF1A modulator)	CloneNo.: 2E5A5
Wirt: Maus	Berechnete Masse: 383 aa, 44 kDa	Empfohlene Verdünnungen: WB 1:500-1:2000 IHC 1:50-1:500 IF 1:50-1:500
Isotyp: IgG2a	Beobachtete Masse: 42-47 kDa	
Immunogen Katalognummer: AG2256		

Anwendungen

Geprüfte Anwendungen:

IF, IHC, WB,ELISA

Getestete Reaktivität:

Human, Maus, Ratte

Hinweis-IHC: Antigenmaskierung mit TE-Puffer pH 9,0 empfohlen. (*) Wahlweise kann die Antigenmaskierung auch mit Citratpuffer pH 6,0 erfolgen.

Positivkontrollen:

WB : fetales humanes Hirngewebe, Rattenhirngewebe

IHC : Maushirngewebe, humanes Gliomgewebe

IF : Maushirngewebe,

Hintergrundinformationen

BRE, also named as BRCC45, is a death receptor-associated antiapoptotic protein, which is also involved in DNA-damage repair, and K63-specific deubiquitination. BRE and its XIAP-sustaining mechanism could represent novel targets for anti-cancer therapy. BRE may regulate TNF-alpha signaling through its interactions with TNFRSF1A. It plays a role in homeostasis or cellular differentiation in cells of neural, epithelial and germline origins. BRE gene has four isoforms with MW 42-47 kDa.

Lagerung

Lagerungsbedingungen:

Bei -20°C lagern. Nach dem Versand ein Jahr lang stabil

Lagerungspuffer:

PBS mit 0.02% Natriumazid und 50% Glycerin pH 7.3.

Aliquotieren ist nicht notwendig bei -20°C Lagerung

*** 20ul-Größen enthalten 0.1% BSA

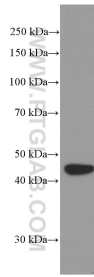
For technical support and original validation data for this product please contact:

T: 1 (888) 4PTGLAB (1-888-478-4522) (toll free in USA), or 1(312) 455-8498 (outside USA)

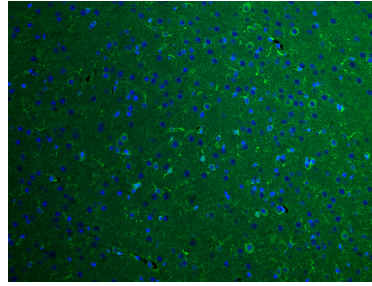
E: proteintech@ptglab.com
W: ptglab.com

This product is exclusively available under Proteintech Group brand and is not available to purchase from any other manufacturer.

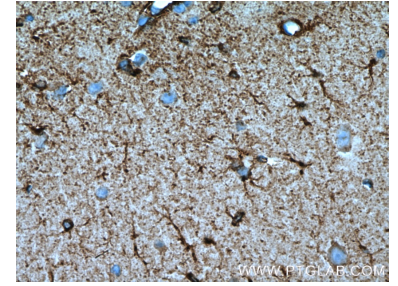
Ausgewählte Validierungsdaten



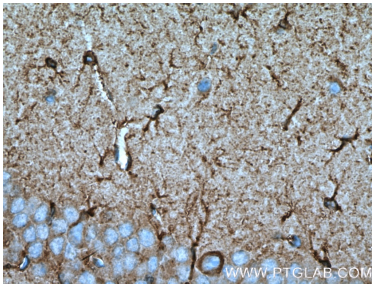
fetal human brain tissue were subjected to SDS PAGE followed by western blot with 66356-1-Ig (BRE Antibody) at dilution of 1:1000 incubated at room temperature for 1.5 hours.



Immunofluorescent analysis of (4% PFA) fixed mouse brain tissue using BRE antibody (66356-1-Ig, Clone: 2E5A5) at dilution of 1:200 and CoraLite®488-Conjugated AffiniPure Goat Anti-Mouse IgG(H+L).



Immunohistochemical analysis of paraffin-embedded mouse brain tissue slide using 66356-1-Ig (BRE Antibody) at dilution of 1:200 (under 10x lens). Heat mediated antigen retrieval with Tris-EDTA buffer (pH 9.0).



Immunohistochemical analysis of paraffin-embedded mouse brain tissue slide using 66356-1-Ig (BRE Antibody) at dilution of 1:200 (under 40x lens). Heat mediated antigen retrieval with Tris-EDTA buffer (pH 9.0).