

Nur für Forschungszwecke

Cyclin D3 Monoklonaler Antikörper

Katalog-Nr.:66357-1-Ig

Vorgestelltes Produkt



Allgemeine Informationen

Katalog-Nr.: 66357-1-Ig	GenBank-Zugangsnummer: BC011616	Reinigungsmethode: Protein-G-Reinigung
Größe: 150ul , Konzentration: 1400 µg/ml von896 Nanodrop und 1000 µg/ml durch die Bradford-Methode mit BSA als Standard;	GeneID (NCBI): 1F2C6	CloneNo.: 1F2C6
Wirt: Maus	Vollständiger Name: cyclin D3	Empfohlene Verdünnungen: WB 1:1000-1:8000 IHC 1:50-1:500
Isotyp: IgG1	Berechnete Masse: 33 kDa	
Immunogen Katalognummer: AG22825	Beobachtete Masse: 33-35 kDa	

Anwendungen

Geprüfte Anwendungen: IHC, WB,ELISA	Positivkontrollen: WB : Raji-Zellen, HEK-293-Zellen, HL-60-Zellen, Jurkat-Zellen, K-562-Zellen
Getestete Reaktivität: Human	IHC : humanes Pankreaskarzinomgewebe,
Hinweis-IHC: Antigendemaskierung mit TE-Puffer pH 9,0 empfohlen. (*) Wahlweise kann die Antigendemaskierung auch mit Citratpuffer pH 6,0 erfolgen.	

Hintergrundinformationen

Cyclin D3 belongs to the highly conserved cyclin family, whose members are characterized by a dramatic periodicity in protein abundance through the cell cycle. Cyclins function as regulators of CDK kinases. Different cyclins exhibit distinct expression and degradation patterns which contribute to the temporal coordination of each mitotic event. This cyclin forms a complex with and functions as a regulatory subunit of CDK4 or CDK6, whose activity is required for cell cycle G1/S transition. This protein has been shown to interact with and be involved in the phosphorylation of tumor suppressor protein Rb. The CDK4 activity associated with this cyclin was reported to be necessary for cell cycle progression through G2 phase into mitosis after UV radiation.

Lagerung

Lagerungsbedingungen:
Bei -20°C lagern. Nach dem Versand ein Jahr lang stabil

Lagerungspuffer:
PBS mit 0.02% Natriumazid und 50% Glycerin pH 7.3.

Aliquotieren ist nicht notwendig bei -20°C Lagerung

*** 20ul-Größen enthalten 0.1% BSA

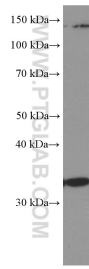
For technical support and original validation data for this product please contact:

T: 1 (888) 4PTGLAB (1-888-478-4522) (toll free
in USA), or 1(312) 455-8498 (outside USA)

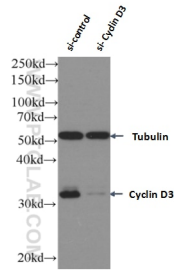
E: proteintech@ptglab.com
W: ptglab.com

This product is exclusively available under Proteintech Group brand and is not available to purchase from any other manufacturer.

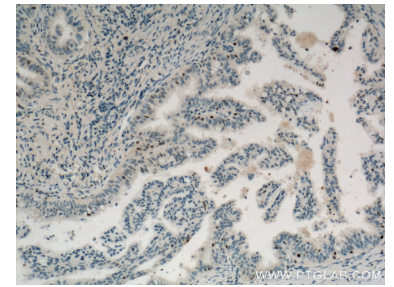
Ausgewählte Validierungsdaten



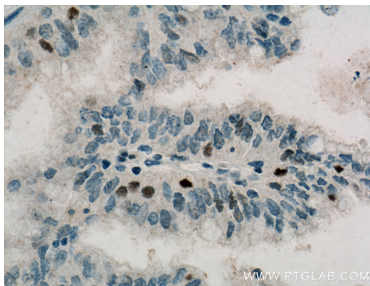
Raji cells were subjected to SDS PAGE followed by western blot with 66357-1-Ig (Cyclin D3 Antibody) at dilution of 1:4000 incubated at room temperature for 1.5 hours.



WB result of Cyclin D3 antibody (66357-1-Ig; 1:1500; incubated at room temperature for 1.5 hours) with sh-Control and sh-Cyclin D3 transfected Jurkat cells.



Immunohistochemical analysis of paraffin-embedded human pancreas cancer tissue slide using 66357-1-Ig (Cyclin D3 Antibody) at dilution of 1:200 (under 10x lens). Heat mediated antigen retrieval with Tris-EDTA buffer (pH 9.0).



Immunohistochemical analysis of paraffin-embedded human pancreas cancer tissue slide using 66357-1-Ig (Cyclin D3 Antibody) at dilution of 1:200 (under 40x lens). Heat mediated antigen retrieval with Tris-EDTA buffer (pH 9.0).