

## Allgemeine Informationen

<b>Katalog-Nr.:</b> 66358-1-Ig	<b>GenBank-Zugangsnummer:</b> BC065832	<b>Reinigungsmethode:</b> Protein-A-Reinigung
<b>Größe:</b> 150ul , Konzentration: 1494 µg/ml von5443 Nanodrop und 1000 µg/ml durch die Bradford-Methode mit BSA als Standard;	<b>GeneID (NCBI):</b> 5443	<b>CloneNo.:</b> 3C12C7
<b>Wirt:</b> Maus	<b>Vollständiger Name:</b> proopiomelanocortin	<b>Empfohlene Verdünnungen:</b> WB 1:1000-1:4000 IHC 1:500-1:2000 IF 1:200-1:800
<b>Isotyp:</b> IgG1	<b>Berechnete Masse:</b> 267 aa, 29 kDa	
<b>Immunogen Katalognummer:</b> AG17311	<b>Beobachtete Masse:</b> 35 kDa	

## Anwendungen

<b>Geprüfte Anwendungen:</b> FC, IF, IHC, WB, ELISA	<b>Positivkontrollen:</b> <b>WB</b> : Hausschwein-Hirngewebe, A375-Zellen, humanes Plazenta-Gewebe, PC-12-Zellen, Rattenhirngewebe <b>IHC</b> : humanes Hypophysengewebe, Maus- Pankreasgewebe <b>IF</b> : HeLa-Zellen,
<b>In Publikationen genannte Anwendungen:</b> IF, IHC, WB	
<b>Getestete Reaktivität:</b> Hausschwein, Human, Maus, Ratte	
<b>Zitierte Arten:</b> Hausschwein, Human, Maus, Ratte	
<b>Hinweis-IHC: Antigendemaskierung mit TE- Puffer pH 9,0 empfohlen. (*) Wahlweise kann die Antigendemaskierung auch mit Citratpuffer pH 6,0 erfolgen.</b>	

## Hintergrundinformationen

Pro-opiomelanocortin (POMC) is a prohormone that encodes multiple smaller peptide hormones within its structure. POMC plays important roles in many pathological and physiological processes, including regulating energy metabolism, immune reactions, and sexual functions. POMC expression differs quantitatively and qualitatively among most normal tissues. The large molecule of POMC is the source of several important biologically active substances. POMC can be cleaved enzymatically into the following peptides: d NPP, γ-MSH, ACTH, α-MSH, CLIP, Lipotropin β, Lipotropin γ, β-MSH, β endorphin and Met-enkephalin.

## Bemerkenswerte Veröffentlichungen

Verfasser	Pubmed ID	Journal	Anwendung
Guangpin Chu	36387867	Front Endocrinol (Lausanne)	WB,IF
Lifang Zhang	34767244	Reprod Sci	IF
Joseph Walters	35537288	Biochem Biophys Res Commun	WB,IF

## Lagerung

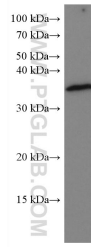
**Lagerungsbedingungen:**  
Bei -20°C lagern. Nach dem Versand ein Jahr lang stabil  
**Lagerungspuffer:**  
PBS mit 0.02% Natriumazid und 50% Glycerin pH 7.3.  
Aliquotieren ist nicht notwendig bei -20°C Lagerung

**\*\*\* 20ul-Größen enthalten 0.1% BSA**

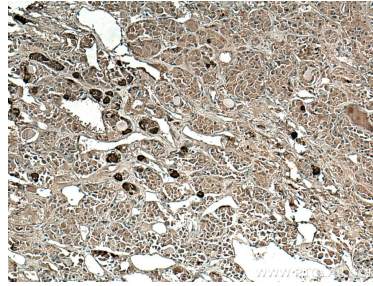
For technical support and original validation data for this product please contact:  
T: 1 (888) 4PTGLAB (1-888-478-4522) (toll free in USA), or 1(312) 455-8498 (outside USA)  
E: [proteintech@ptglab.com](mailto:proteintech@ptglab.com)  
W: [ptglab.com](http://ptglab.com)

**This product is exclusively available under Proteintech Group brand and is not available to purchase from any other manufacturer.**

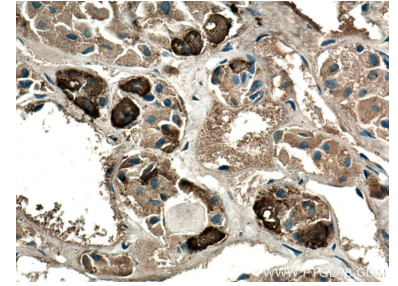
## Ausgewählte Validierungsdaten



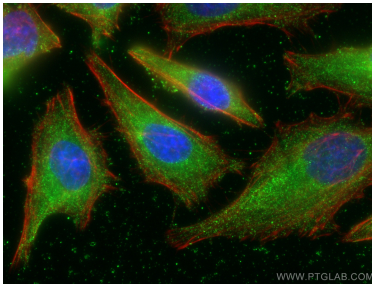
pig brain tissue were subjected to SDS PAGE followed by western blot with 66358-1-Ig (POMC antibody) at dilution of 1:2000 incubated at room temperature for 1.5 hours.



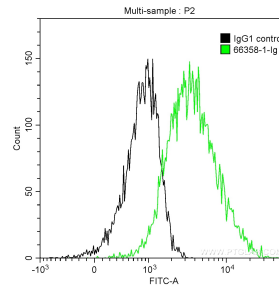
Immunohistochemical analysis of paraffin-embedded human pituitary tissue slide using 66358-1-Ig (POMC antibody) at dilution of 1:1000 (under 10x lens). Heat mediated antigen retrieval with Tris-EDTA buffer (pH 9.0).



Immunohistochemical analysis of paraffin-embedded human pituitary tissue slide using 66358-1-Ig (POMC antibody) at dilution of 1:1000 (under 40x lens). Heat mediated antigen retrieval with Tris-EDTA buffer (pH 9.0).



Immunofluorescent analysis of (-20°C Ethanol) fixed HeLa cells using POMC antibody (66358-1-Ig, Clone: 3C12C7) at dilution of 1:400 and CoraLite@488-Conjugated AffiniPure Goat Anti-Mouse IgG(H+L), CL594-Phalloidin (red).



1x10<sup>6</sup> HeLa cells were intracellularly stained with 0.2 ug Anti-Human POMC (66358-1-Ig, Clone:3C12C7) and CoraLite@488-Conjugated AffiniPure Goat Anti-Mouse IgG(H+L) at dilution 1:1000 (green), and 0.2 ug Mouse IgG1 Isotype Control (66360-1-Ig, Clone: T1F8D3F10) (black). Cells were fixed with 4% PFA and permeabilized with 0.1% TritonX-100.