

Nur für Forschungszwecke

Mouse IgG1 isotype control Monoklonaler Antikörper



Katalog-Nr.:66360-1-Ig **5 Publikationen**

Allgemeine Informationen

Katalog-Nr.:

66360-1-Ig

GenBank-Zugangsnummer:

GeneID (NCBI):

Reinigungsmethode:

Protein-A-Reinigung

Größe:

150ul, Konzentration: 1000 µg/ml von

Vollständiger Name:

CloneNo.:

1F8D3

Nanodrop;

Wirt:

Maus

Empfohlene Verdünnungen:

WB 1:500-1:2000

Isotyp:

IgG1

Anwendungen

Geprüfte Anwendungen:

FC, WB, ELISA

Positivkontrollen:

WB, ,

In Publikationen genannte Anwendungen:

CoIP, IHC, IP, RIP

Getestete Reaktivität:

Megathura Crenulata

Zitierte Arten:

Human

Hintergrundinformationen

This antibody is used as the isotype control of mouse IgG1 (Kappa). It can be used as the isotype control in Flow Cytometry, Immuno-Precipitation and other experiments. The immunogen of this antibody is Keyhole Limpet Hemocyanin (KLH).

Bemerkenswerte Veröffentlichungen

Verfasser	Pubmed ID	Journal	Anwendung
Chujie Ding	35913801	FASEB J	CoIP
Yuting Yang	34242624	Exp Cell Res	IP
Tomohiro Kawasumi	34989246	Am J Rhinol Allergy	IHC

Lagerung

Lagerungsbedingungen:

Bei -20°C lagern. Nach dem Versand ein Jahr lang stabil

Lagerungspuffer:

PBS mit 0.02% Natriumazid und 50% Glycerin pH 7.3.

Aliquotieren ist nicht notwendig bei -20°C Lagerung

***** 20ul-Größen enthalten 0.1% BSA**

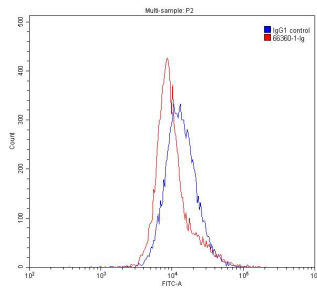
For technical support and original validation data for this product please contact:

T: 1 (888) 4PTGLAB (1-888-478-4522) (toll free
in USA), or 1(312) 455-8498 (outside USA)

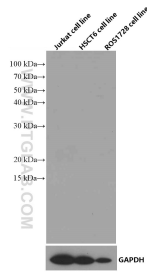
E: proteintech@ptglab.com
W: ptglab.com

This product is exclusively available under Proteintech Group brand and is not available to purchase from any other manufacturer.

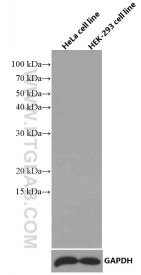
Ausgewählte Validierungsdaten



1×10^6 K-562 cells were stained with 0.20 μ g Mouse IgG1 isotype control antibody (66360-1-Ig, red) and another control antibody (blue). Fixed with 90% MeOH.



Various lysates were subjected to SDS PAGE followed by western blot with 66360-1-Ig (Mouse IgG1 isotype control antibody) at dilution of 1:1000 incubated at room temperature for 1.5 hours.



Various lysates were subjected to SDS PAGE followed by western blot with 66360-1-Ig (Mouse IgG1 isotype control antibody) at dilution of 1:1000 incubated at room temperature for 1.5 hours.