

Allgemeine Informationen

Katalog-Nr.: 66372-1-Ig	GenBank-Zugangsnummer: BC034238	Reinigungsmethode: Protein-G-Reinigung
Größe: 150ul , Konzentration: 1400 µg/ml von10857 Nanodrop und 1000 µg/ml durch die Bradford-Methode mit BSA als Standard;	GeneID (NCBI): 10857	CloneNo.: 1C10D11
Wirt: Maus	Vollständiger Name: progesterone receptor membrane component 1	Empfohlene Verdünnungen: WB 1:5000-1:50000 IHC 1:50-1:500 IF 1:200-1:800
Isotyp: IgG1	Berechnete Masse: 195 aa, 22 kDa	
Immunogen Katalognummer: AG3643	Beobachtete Masse: 25-27 kDa	

Anwendungen

Geprüfte Anwendungen:

IF, IHC, WB, ELISA

In Publikationen genannte Anwendungen:

IF, WB

Getestete Reaktivität:

Hausschwein, Human, Maus, Ratte

Zitierte Arten:

Human

Hinweis-IHC: Antigenmaskierung mit TE-Puffer pH 9,0 empfohlen. (*) Wahlweise kann die Antigenmaskierung auch mit Citratpuffer pH 6,0 erfolgen.

Positivkontrollen:

WB : A549-Zellen, fetales humanes Hirngewebe, Hausschwein-Hirngewebe, HEK-293-Zellen, HeLa-Zellen, Jurkat-Zellen, K-562-Zellen, Maushirngewebe, MCF-7-Zellen, NIH/3T3-Zellen, Rattenhirngewebe

IHC : humanes Ovarialkarzinomgewebe, humanes Lungenkarzinomgewebe

IF : humanes Ovarialkarzinomgewebe,

Hintergrundinformationen

Progesterone receptor membrane component 1 (PGRMC1) is a member of a multi-protein progesterone-binding complex. However, PGRMC1 shares homology with cytochrome b5-related proteins rather than hormone receptors (PMID: 18992768). It is a heme binding protein with binding sites for Src homology (SH2) and SH3 domain-containing proteins (PMID: 17583495). PGRMC1 is overexpressed in a variety of cancers, and thus represents an important biomarker for cancer progression and a potential target for anticancer drugs (PMID: 21730960). In nonmalignant tissues, PGRMC1 is highly expressed in the liver and kidney (PMID: 9705155; 20164297).

Bemerkenswerte Veröffentlichungen

Verfasser	Pubmed ID	Journal	Anwendung
Lihua Wang-Eckhardt	32924377	Biol Chem	IF, WB

Lagerung

Lagerungsbedingungen:

Bei -20°C lagern. Nach dem Versand ein Jahr lang stabil

Lagerungspuffer:

PBS mit 0.02% Natriumazid und 50% Glycerin pH 7.3.

Aliquotieren ist nicht notwendig bei -20°C Lagerung

*** 20ul-Größen enthalten 0.1% BSA

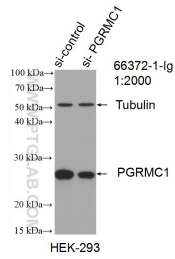
For technical support and original validation data for this product please contact:

T: 1 (888) 4PTGLAB (1-888-478-4522) (toll free in USA), or 1(312) 455-8498 (outside USA)

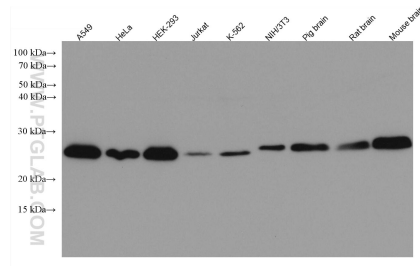
E: proteintech@ptglab.com
W: ptglab.com

This product is exclusively available under Proteintech Group brand and is not available to purchase from any other manufacturer.

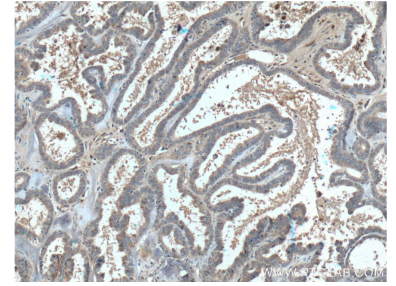
Ausgewählte Validierungsdaten



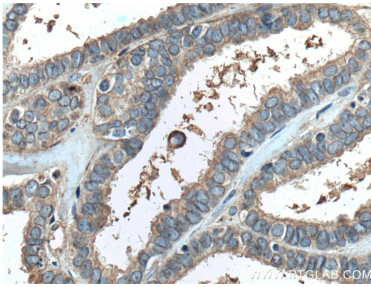
WB result of PGRMC1 antibody (66372-1-Ig; 1:2000; incubated at room temperature for 1.5 hours) with sh-Control and sh-PGRMC1 transfected HEK-293 cells.



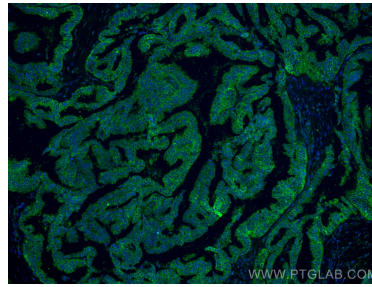
Various lysates were subjected to SDS PAGE followed by western blot with 66372-1-Ig (PGRMC1 antibody) at dilution of 1:10000 incubated at room temperature for 1.5 hours.



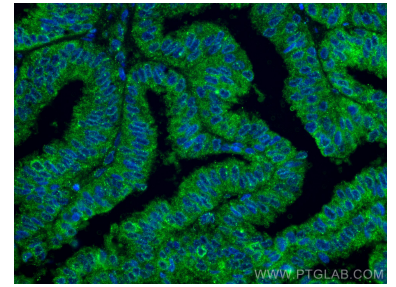
Immunohistochemical analysis of paraffin-embedded human ovary tumor tissue slide using 66372-1-Ig (PGRMC1 Antibody) at dilution of 1:400 (under 10x lens). Heat mediated antigen retrieval with Tris-EDTA buffer (pH 9.0).



Immunohistochemical analysis of paraffin-embedded human ovary tumor tissue slide using 66372-1-Ig (PGRMC1 Antibody) at dilution of 1:400 (under 40x lens). Heat mediated antigen retrieval with Tris-EDTA buffer (pH 9.0).



Immunofluorescent analysis of (4% PFA) fixed human ovary tumor tissue using PGRMC1 antibody (66372-1-Ig, Clone: 1C10D11) at dilution of 1:400 and CoraLite®488-Conjugated AffiniPure Goat Anti-Mouse IgG(H+L).



Immunofluorescent analysis of (4% PFA) fixed human ovary tumor tissue using PGRMC1 antibody (66372-1-Ig, Clone: 1C10D11) at dilution of 1:400 and CoraLite®488-Conjugated AffiniPure Goat Anti-Mouse IgG(H+L).