

Nur für Forschungszwecke

TINP1 Monoklonaler Antikörper

Katalog-Nr.:66374-1-Ig



Allgemeine Informationen

Katalog-Nr.: 66374-1-Ig	GenBank-Zugangsnummer: BC005288	Reinigungsmethode: Protein-G-Reinigung
Größe: 150ul , Konzentration: 1500 µg/ml von10412 Nanodrop und 1000 µg/ml durch die Bradford-Methode mit BSA als Standard;	GeneID (NCBI): 10412	CloneNo.: 1E3B11
Wirt: Maus	Vollständiger Name: TGF beta-inducible nuclear protein 1	Empfohlene Verdünnungen: WB 1:1000-1:8000 IHC 1:50-1:500 IF 1:200-1:800
Isotyp: IgG1	Berechnete Masse: 260 aa, 30 kDa	
Immunogen Katalognummer: AG8822	Beobachtete Masse: 34 kDa	

Anwendungen

Geprüfte Anwendungen: IF, IHC, WB, ELISA	Positivkontrollen: WB : L02-Zellen, HEK-293-Zellen, HepG2-Zellen IHC : humanes Mammakarzinomgewebe, IF : HEK-293-Zellen,
Getestete Reaktivität: Human	
Hinweis-IHC: Antigendemaskierung mit TE-Puffer pH 9,0 empfohlen. (*) Wahlweise kann die Antigendemaskierung auch mit Citratpuffer pH 6,0 erfolgen.	

Hintergrundinformationen

TINP1 (TGF beta inducible nuclear protein 1) was widely expressed in various cell lines. TINP1 overexpression significantly promoted tumor cell proliferation, which may be associated with the downregulation of p53 expression. Furthermore, TINP1 promoted a number of cell lines to the S phase of the cell cycle. TINP1 promotes cell proliferation and significantly reduces p53 and p21 expression.

Lagerung

Lagerungsbedingungen:
Bei -20°C lagern. Nach dem Versand ein Jahr lang stabil
Lagerungspuffer:
PBS mit 0.02% Natriumazid und 50% Glycerin pH 7.3.
Aliquotieren ist nicht notwendig bei -20°C Lagerung

*** 20ul-Größen enthalten 0.1% BSA

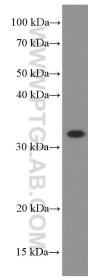
For technical support and original validation data for this product please contact:

T: 1 (888) 4PTGLAB (1-888-478-4522) (toll free in USA), or 1(312) 455-8498 (outside USA)

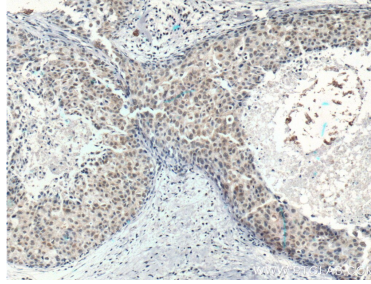
E: proteintech@ptglab.com
W: ptglab.com

This product is exclusively available under Proteintech Group brand and is not available to purchase from any other manufacturer.

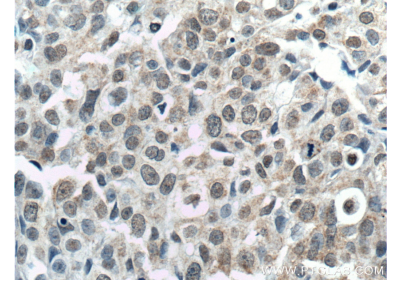
Ausgewählte Validierungsdaten



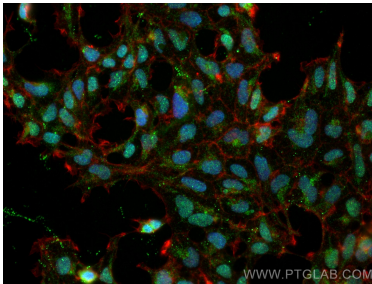
L02 cells were subjected to SDS PAGE followed by western blot with 66374-1-Ig (TINP1 Antibody) at dilution of 1:4000 incubated at room temperature for 1.5 hours.



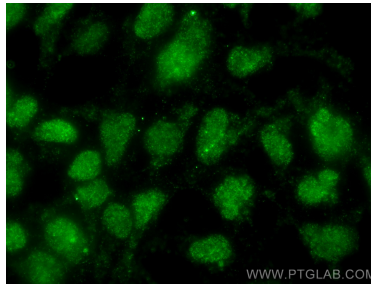
Immunohistochemical analysis of paraffin-embedded human breast cancer tissue slide using 66374-1-Ig (TINP1 Antibody) at dilution of 1:200 (under 10x lens). Heat mediated antigen retrieval with Tris-EDTA buffer (pH 9.0).



Immunohistochemical analysis of paraffin-embedded human breast cancer tissue slide using 66374-1-Ig (TINP1 Antibody) at dilution of 1:200 (under 40x lens). Heat mediated antigen retrieval with Tris-EDTA buffer (pH 9.0).



Immunofluorescent analysis of (4% PFA) fixed HEK-293 cells using TINP1 antibody (66374-1-Ig, Clone: 1E3B11) at dilution of 1:400 and CoraLite@488-Conjugated AffiniPure Goat Anti-Mouse IgG(H+L).



Immunofluorescent analysis of (4% PFA) fixed HEK-293 cells using TINP1 antibody (66374-1-Ig, Clone: 1E3B11) at dilution of 1:400 and CoraLite@488-Conjugated AffiniPure Goat Anti-Mouse IgG(H+L).