

Nur für Forschungszwecke

Cardiac Troponin I Monoklonaler Antikörper



Katalog-Nr.: 66376-1-Ig **9 Publikationen**

Allgemeine Informationen

Katalog-Nr.: 66376-1-Ig	GenBank-Zugangsnummer: BC096165	Reinigungsmethode: Protein-G-Reinigung
Größe: 150ul, Konzentration: 2000 µg/ml von 7137 Nanodrop und 1000 µg/ml durch die Bradford-Methode mit BSA als Standard;	GeneID (NCBI): troponin I type 3 (cardiac)	CloneNo.: 1D5D6
Wirt: Maus	Vollständiger Name: troponin I type 3 (cardiac)	Empfohlene Verdünnungen: WB 1:5000-1:50000 IHC 1:50-1:500 IF 1:200-1:800
Isotyp: IgG1	Berechnete Masse: 210 aa, 24 kDa	
Immunogen Katalognummer: AG16758	Beobachtete Masse: 26-28 kDa	

Anwendungen

Geprüfte Anwendungen: IF, IHC, WB, ELISA	Positivkontrollen: WB : humanes Herzgewebe, Hausschwein-Herzgewebe, Kaninchenherzgewebe, Mausherzgewebe, Rattenherzgewebe
In Publikationen genannte Anwendungen: IF, ISFET, WB	IHC : humanes Herzgewebe, Mausherzgewebe
Getestete Reaktivität: Human, Maus, Ratte	IF : Mausherzgewebe,
Zitierte Arten: Hausschwein, Human, Maus	
Hinweis-IHC: Antigendemaskierung mit TE-Puffer pH 9,0 empfohlen. (*) Wahlweise kann die Antigendemaskierung auch mit Citratpuffer pH 6,0 erfolgen.	

Hintergrundinformationen

Troponin I (TnI) is the inhibitory subunit of troponin, the structural protein involved in the regulation of striated muscle contraction. Cardiac Troponin I (cTnI) is produced by cardiac muscle. Two other TnI isoforms (slow sTnI and fast sTnI) are produced by slow-twitch and fast-twitch skeletal muscles, respectively. cTnI has been considered as one of the most specific and sensitive markers of myocardial damage like acute myocardial infarction (AMI) for decades. Detection of cTnI in serum is widely accepted as a diagnostic tool in acute coronary syndromes. This antibody is specific to cTnI, but not cross-react with skeletal TnI.

Bemerkenswerte Veröffentlichungen

Verfasser	Pubmed ID	Journal	Anwendung
Karthikeyan Thirugnanam	31718444	J Am Heart Assoc	IF
Anan Huang	35715868	Stem Cell Res Ther	IF
Chandong Ding	28962131	Exp Ther Med	

Lagerung

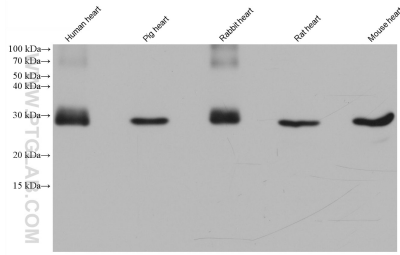
Lagerungsbedingungen:
Bei -20°C lagern. Nach dem Versand ein Jahr lang stabil
Lagerungspuffer:
PBS mit 0.02% Natriumazid und 50% Glycerin pH 7.3.
Aliquotieren ist nicht notwendig bei -20°C Lagerung

*** 20ul-Größen enthalten 0.1% BSA

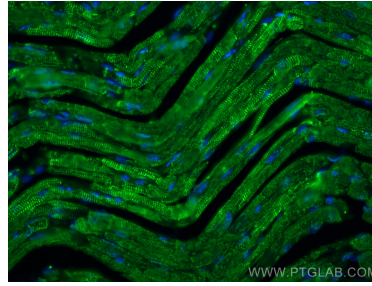
For technical support and original validation data for this product please contact:
T: 1 (888) 4PTGLAB (1-888-478-4522) (toll free in USA), or 1(312) 455-8498 (outside USA)
E: proteintech@ptglab.com
W: ptglab.com

This product is exclusively available under Proteintech Group brand and is not available to purchase from any other manufacturer.

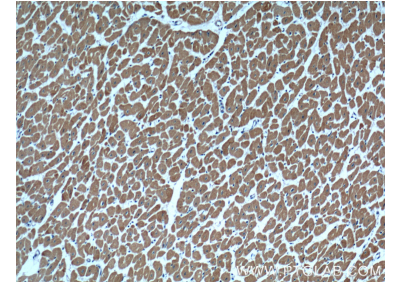
Ausgewählte Validierungsdaten



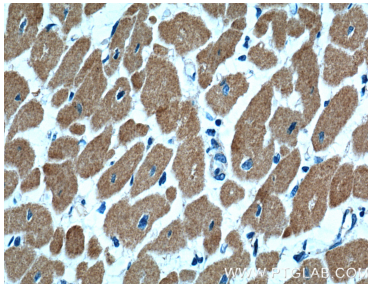
Various lysates were subjected to SDS PAGE followed by western blot with 66376-1-Ig (Cardiac Troponin I antibody) at dilution of 1:20000 incubated at room temperature for 1.5 hours.



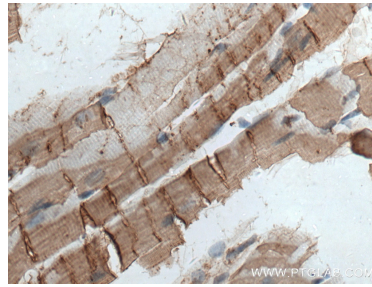
Immunofluorescent analysis of (4% PFA) fixed mouse heart tissue using Cardiac Troponin I antibody (66376-1-Ig, Clone: 1D5D6) at dilution of 1:400 and CoraLite®488-Conjugated AffiniPure Goat Anti-Mouse IgG(H+L).



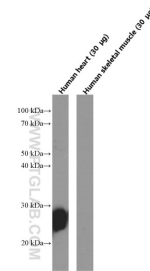
Immunohistochemical analysis of paraffin-embedded human heart tissue slide using 66376-1-Ig (Cardiac Troponin I antibody) at dilution of 1:600 (under 10x lens).



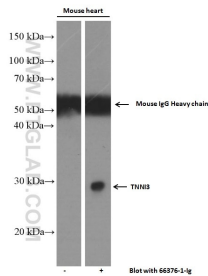
Immunohistochemical analysis of paraffin-embedded human heart tissue slide using 66376-1-Ig (Cardiac Troponin I antibody) at dilution of 1:600 (under 40x lens).



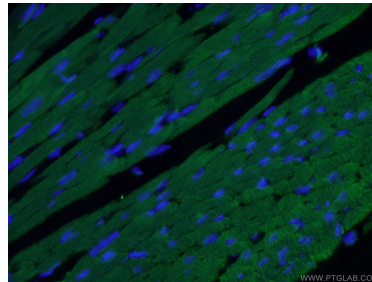
Immunohistochemical analysis of paraffin-embedded mouse heart tissue slide using 66376-1-Ig (Cardiac Troponin I antibody) at dilution of 1:2000 (under 40x lens. Heat mediated antigen retrieval with Tris-EDTA buffer (pH 9.0).



Human heart tissue and skeletal muscle tissue (negative control) were subjected to SDS PAGE followed by western blot with 66376-1-Ig (Cardiac Troponin I Antibody) at dilution of 1:20,000 incubated at room temperature for 1.5 hours.



Mouse heart tissue (6 ug/lane) was subjected to SDS PAGE followed by western blot with 66376-1-Ig (Cardiac Troponin I Antibody) at dilution of 1:5,000 incubated at room temperature for 1.5 hours.



Immunofluorescent analysis of (4% PFA) fixed mouse heart tissue using 66376-1-Ig (Cardiac Troponin I antibody) at dilution of 1:50 and Alexa Fluor 488-conjugated AffiniPure Goat Anti-Mouse IgG(H+L).