

Nur für Forschungszwecke

FKBPL Monoklonaler Antikörper

Katalog-Nr.:66389-1-Ig **1 Publikationen**



Allgemeine Informationen

Katalog-Nr.: 66389-1-Ig	GenBank-Zugangsnummer: BC004168	Reinigungsmethode: Protein-G-Reinigung
Größe: 150ul , Konzentration: 1500 µg/ml von63943 Nanodrop und 1000 µg/ml durch die Bradford-Methode mit BSA als Standard;	GeneID (NCBI): von63943	CloneNo.: 2H10B10
Wirt: Maus	Vollständiger Name: FK506 binding protein like	Empfohlene Verdünnungen: WB 1:1000-1:8000 IHC 1:100-1:400 IF 1:50-1:500
Isotyp: IgG1	Berechnete Masse: 349 aa, 38 kDa	
Immunogen Katalognummer: AG0112	Beobachtete Masse: 42 kDa	

Anwendungen

Geprüfte Anwendungen: IF, IHC, WB,ELISA	Positivkontrollen: WB : HeLa-Zellen, 4T1-Zellen, C6-Zellen, HEK-293-Zellen, Jurkat-Zellen, MCF-7-Zellen, NIH/3T3-Zellen, Raji-Zellen, RAW 264.7-Zellen, ROS1728-Zellen
In Publikationen genannte Anwendungen: WB	IHC : humanes Mammakarzinomgewebe, humanes Hodengewebe
Getestete Reaktivität: Human, Maus, Ratte	IF : MCF-7-Zellen,
Zitierte Arten: Human	
Hinweis-IHC: Antigenmaskierung mit TE-Puffer pH 9,0 empfohlen. (*) Wahlweise kann die Antigenmaskierung auch mit Citratpuffer pH 6,0 erfolgen.	

Hintergrundinformationen

FKBPL, also named as DIR1, NG7 and WISp39, has similarity to the immunophilin protein family, which plays a role in immunoregulation and basic cellular processes involving protein folding and trafficking. FKBPL levels may be a prognostic indicator and determinant of response to endocrine therapy(PMID:20103631, 15664193) .It can be detected the band between 38 kDa and 48 kDa by western blot.

Bemerkenswerte Veröffentlichungen

Verfasser	Pubmed ID	Journal	Anwendung
Sahar Masoumeh Ghorbanpour	36652019	Cell Mol Life Sci	WB

Lagerung

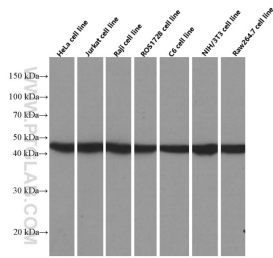
Lagerungsbedingungen:
Bei -20°C lagern. Nach dem Versand ein Jahr lang stabil
Lagerungspuffer:
PBS mit 0.02% Natriumazid und 50% Glycerin pH 7.3.
Aliquotieren ist nicht notwendig bei -20°C Lagerung

***** 20ul-Größen enthalten 0.1% BSA**

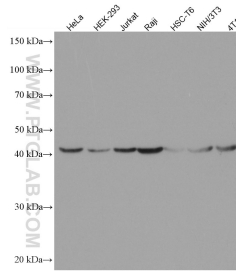
For technical support and original validation data for this product please contact:
T: 1 (888) 4PTGLAB (1-888-478-4522) (toll free in USA), or 1(312) 455-8498 (outside USA)
E: proteintech@ptglab.com
W: ptglab.com

This product is exclusively available under Proteintech Group brand and is not available to purchase from any other manufacturer.

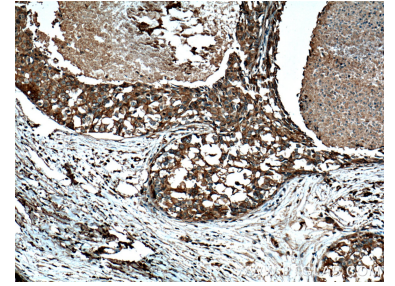
Ausgewählte Validierungsdaten



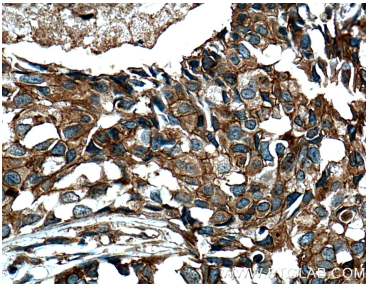
Western blot analysis of FKBPL-specific in various cell lines using Proteintech antibody 66389-1-Ig at dilution of 1:4000 incubated at room temperature for 1.5 hours.



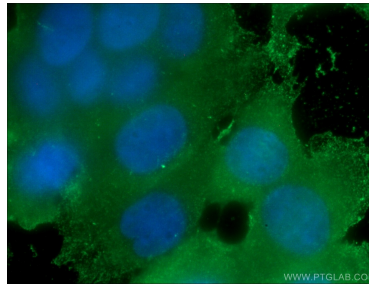
Various lysates were subjected to SDS PAGE followed by western blot with 66389-1-Ig (FKBPL antibody) at dilution of 1:10000 incubated at room temperature for 1.5 hours.



Immunohistochemical analysis of paraffin-embedded human breast cancer tissue slide using 66389-1-Ig (FKBPL Antibody) at dilution of 1:200 (under 10x lens). Heat mediated antigen retrieval with Tris-EDTA buffer (pH 9.0).



Immunohistochemical analysis of paraffin-embedded human breast cancer tissue slide using 66389-1-Ig (FKBPL Antibody) at dilution of 1:200 (under 40x lens). Heat mediated antigen retrieval with Tris-EDTA buffer (pH 9.0).



Immunofluorescent analysis of (-20°C Ethanol) fixed MCF-7 cells using 66389-1-Ig (FKBPL antibody) at dilution of 1:100 and Alexa Fluor 488-Conjugated AffiniPure Goat Anti-Mouse IgG(H+L).