

Nur für Forschungszwecke

Cyclin A2 Monoklonaler Antikörper

Katalog-Nr.:66391-1-Ig

Vorgestelltes Produkt

16 Publikationen



Allgemeine Informationen

Katalog-Nr.: 66391-1-Ig	GenBank-Zugangsnummer: BC104783	Reinigungsmethode: Protein-A-Reinigung
Größe: 150ul , Konzentration: 1400 µg/ml von890 Nanodrop und 1000 µg/ml durch die Bradford-Methode mit BSA als Standard;	GeneID (NCBI): cyclin A2	CloneNo.: 1C6C11
Wirt: Maus	Vollständiger Name: cyclin A2	Empfohlene Verdünnungen: WB 1:2000-1:10000 IHC 1:1000-1:4000 IF 1:50-1:500
Isotyp: IgG2a	Berechnete Masse: 432 aa, 49 kDa	
Immunogen Katalognummer: AG12765	Beobachtete Masse: 52 kDa	

Anwendungen

Geprüfte Anwendungen: IF, IHC, WB, ELISA	Positivkontrollen: WB : HepG2-Zellen, HEK-293-Zellen, HeLa-Zellen, Jurkat-Zellen, Raji-Zellen IHC : humanes Tonsillitisgewebe, IF : HeLa-Zellen, MCF-7-Zellen
In Publikationen genannte Anwendungen: IF, WB	
Getestete Reaktivität: Human	
Zitierte Arten: Human, Maus, Ratte	
Hinweis-IHC: Antigenmaskierung mit TE-Puffer pH 9,0 empfohlen. (*) Wahlweise kann die Antigenmaskierung auch mit Citratpuffer pH 6,0 erfolgen.	

Hintergrundinformationen

CCNA2 belongs to the highly conserved cyclin family, whose members are characterized by a dramatic periodicity in protein abundance through the cell cycle. Cyclins function as regulators of CDK kinases. Different cyclins exhibit distinct expression and degradation patterns which contribute to the temporal coordination of each mitotic event. In contrast to cyclin A1, which is present only in germ cells, this cyclin is expressed in all tissues tested. CCNA2 binds and activates CDC2 or CDK2 kinases, and thus promotes both cell cycle G1/S and G2/M transitions.

Bemerkenswerte Veröffentlichungen

Verfasser	Pubmed ID	Journal	Anwendung
Y Zhong	28869606	Oncogene	WB
Dianbao Zhang	33076708	Nutr Cancer	WB
Jingwen Tan	36208777	Chem Biol Interact	WB

Lagerung

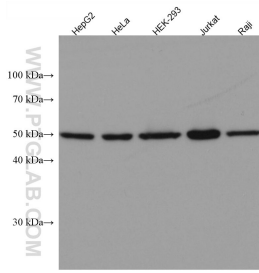
Lagerungsbedingungen:
Bei -20°C lagern. Nach dem Versand ein Jahr lang stabil
Lagerungspuffer:
PBS mit 0.02% Natriumazid und 50% Glycerin pH 7.3.
Aliquotieren ist nicht notwendig bei -20°C Lagerung

*** 20ul-Größen enthalten 0.1% BSA

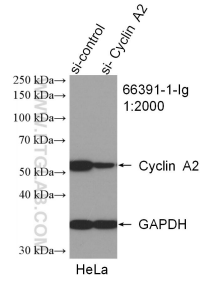
For technical support and original validation data for this product please contact:
T: 1 (888) 4PTGLAB (1-888-478-4522) (toll free in USA), or 1(312) 455-8498 (outside USA)
E: proteintech@ptglab.com
W: ptglab.com

This product is exclusively available under Proteintech Group brand and is not available to purchase from any other manufacturer.

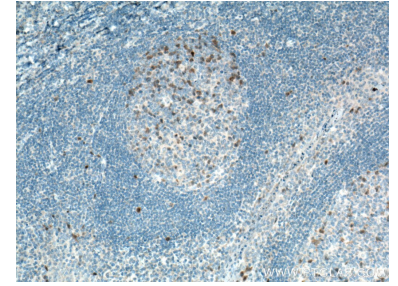
Ausgewählte Validierungsdaten



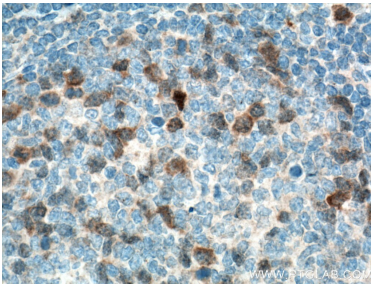
Various lysates were subjected to SDS PAGE followed by western blot with 66391-1-Ig (Cyclin A2 antibody) at dilution of 1:10000 incubated at room temperature for 1.5 hours.



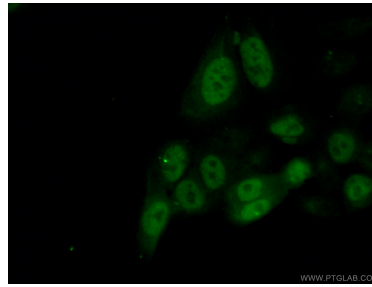
WB result of Cyclin A2 antibody (66391-1-Ig; 1:2000; incubated at room temperature for 1.5 hours) with sh-Control and sh-Cyclin A2 transfected HeLa cells.



Immunohistochemical analysis of paraffin-embedded human tonsillitis tissue slide using 66391-1-Ig (Cyclin A2 antibody) at dilution of 1:2000 (under 10x lens. Heat mediated antigen retrieval with Tris-EDTA buffer (pH 9.0).



Immunohistochemical analysis of paraffin-embedded human tonsillitis tissue slide using 66391-1-Ig (Cyclin A2 antibody) at dilution of 1:2000 (under 40x lens. Heat mediated antigen retrieval with Tris-EDTA buffer (pH 9.0).



Immunofluorescent analysis of (4% PFA) fixed HeLa cells using 66391-1-Ig (Cyclin A2 antibody) at dilution of 1:100 and Alexa Fluor 488-conjugated AffiniPure Goat Anti-Mouse IgG(H+L).