

Nur für Forschungszwecke

CD36 Monoklonaler Antikörper

Katalog-Nr.:66395-1-Ig **11 Publikationen**



Allgemeine Informationen

Katalog-Nr.: 66395-1-Ig	GenBank-Zugangsnummer: BC008406	Reinigungsmethode: Protein-G-Reinigung
Größe: 150ul , Konzentration: 1200 µg/ml von948 Nanodrop und 1000 µg/ml durch die Bradford-Methode mit BSA als Standard;	GeneID (NCBI): Vollständiger Name: CD36 molecule (thrombospondin receptor)	CloneNo.: 1A8C5
Wirt: Maus	Berechnete Masse: 472 aa, 53 kDa	Empfohlene Verdünnungen: WB 1:1000-1:6000 IHC 1:500-1:2000
Isotyp: IgG1	Beobachtete Masse: 88 kDa	
Immunogen Katalognummer: AG13541		

Anwendungen

Geprüfte Anwendungen: FC, IHC, WB, ELISA	Positivkontrollen: WB : humanes Herzgewebe, humanes Milzgewebe, humanes Plazenta-Gewebe IHC : humanes Milzgewebe, humanes Herzgewebe
In Publikationen genannte Anwendungen: IF, IHC, WB	
Getestete Reaktivität: Human	
Zitierte Arten: Human	
Hinweis-IHC: Antigenmaskierung mit TE-Puffer pH 9,0 empfohlen. (*) Wahlweise kann die Antigenmaskierung auch mit Citratpuffer pH 6,0 erfolgen.	

Hintergrundinformationen

CD36, also named as GP3B and GP4, is an 88-kDa membrane glycoprotein present on platelets, monocytes, erythroid precursors, endothelial cells, and several tumor cell lines. CD36 binds to collagen, thrombospondin, anionic phospholipids, long chain fatty acids and may function in the transport and/or as a regulator of fatty acid transport and oxidized LDL. CD36 may function as a cell adhesion molecule. It mediates cytoadherence of Plasmodium falciparum parasitized erythrocytes. Mutation of CD36 will cause platelet glycoprotein IV deficiency which known as CD36 deficiency. Genetic variations in CD36 are associated with susceptibility to coronary heart disease type 7 (CHD57).

Bemerkenswerte Veröffentlichungen

Verfasser	Pubmed ID	Journal	Anwendung
Yan Cao	34599913	Eur J Pharmacol	WB
Simon Riis	31430404	Scand J Med Sci Sports	IHC
Chenxi Liang	35656026	Oxid Med Cell Longev	WB

Lagerung

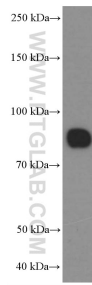
Lagerungsbedingungen:
Bei -20°C lagern. Nach dem Versand ein Jahr lang stabil
Lagerungspuffer:
PBS mit 0.02% Natriumazid und 50% Glycerin pH 7.3.
Aliquotieren ist nicht notwendig bei -20°C Lagerung

***** 20ul-Größen enthalten 0.1% BSA**

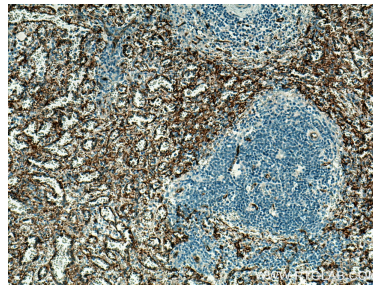
For technical support and original validation data for this product please contact:
T: 1 (888) 4PTGLAB (1-888-478-4522) (toll free in USA), or 1(312) 455-8498 (outside USA)
E: proteintech@ptglab.com
W: ptglab.com

This product is exclusively available under Proteintech Group brand and is not available to purchase from any other manufacturer.

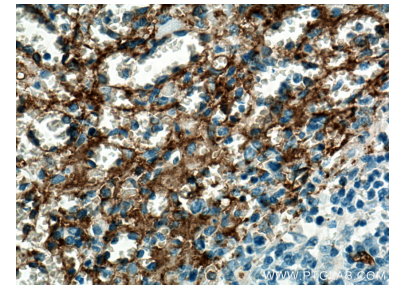
Ausgewählte Validierungsdaten



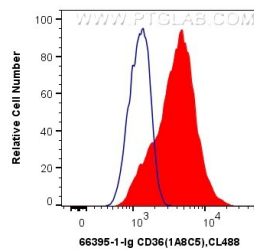
human heart tissue were subjected to SDS PAGE followed by western blot with 66395-1-Ig (CD36 Antibody) at dilution of 1:3000 incubated at room temperature for 1.5 hours.



Immunohistochemical analysis of paraffin-embedded human spleen tissue slide using 66395-1-Ig (CD36 antibody) at dilution of 1:1000 (under 10x lens). Heat mediated antigen retrieval with Tris-EDTA buffer (pH 9.0).



Immunohistochemical analysis of paraffin-embedded human spleen tissue slide using 66395-1-Ig (CD36 antibody) at dilution of 1:1000 (under 40x lens). Heat mediated antigen retrieval with Tris-EDTA buffer (pH 9.0).



1X10⁶ THP-1 cells were surface stained with 0.4 ug Anti-Human CD36 (66395-1-Ig, Clone:1A8C5) and CoraLite@488-Conjugated AffiniPure Goat Anti-Mouse IgG(H+L) at dilution 1:1000 (red), or 0.4 ug Control Antibody. Cells were not fixed.