

Nur für Forschungszwecke

Plasminogen Monoklonaler Antikörper



Katalog-Nr.:66399-1-Ig **5 Publikationen**

Allgemeine Informationen

Katalog-Nr.: 66399-1-Ig	GenBank-Zugangsnummer: BC060513	Reinigungsmethode: Protein-A-Reinigung
Größe: 150ul , Konzentration: 1200 µg/ml von5340 Nanodrop und 1000 µg/ml durch die Bradford-Methode mit BSA als Standard;	GeneID (NCBI): 5340	CloneNo.: 1F6A11
Wirt: Maus	Vollständiger Name: plasminogen	Empfohlene Verdünnungen: WB 1:1000-1:4000 IHC 1:50-1:500 IF 1:200-1:800
Isotyp: IgG1	Berechnete Masse: 810 aa, 91 kDa	
Immunogen Katalognummer: AG9938	Beobachtete Masse: 105 kDa	

Anwendungen

Geprüfte Anwendungen: IF, IHC, WB, ELISA	Positivkontrollen: WB : humanes Plasmagewebe, IHC : humanes Leberkarzinomgewebe, IF : humanes Leberkarzinomgewebe,
In Publikationen genannte Anwendungen: IHC, WB	
Getestete Reaktivität: Human	
Zitierte Arten: Human, Maus	
Hinweis-IHC: Antigenmaskierung mit TE-Puffer pH 9,0 empfohlen. (*) Wahlweise kann die Antigenmaskierung auch mit Citratpuffer pH 6,0 erfolgen.	

Hintergrundinformationen

Plasminogen is a secreted blood zymogen that is activated by proteolysis and converted to plasmin and angiotatin. Plasminogen plays an important role in fibrinolysis as well as wound healing, cell migration, tissue modeling and angiogenesis. Plasminogen is synthesized in the liver, and it circulates in the blood, with a half-life of 2.2 days. Plasminogen is the precursor of plasmin, which lyses fibrin clots to fibrin degradation products (FDP) and D-dimer; the conversion to active protease is mediated by tissue-type (tPA) and urokinase-type (uPA) plasminogen activators. Defects in plasminogen are likely a cause of thrombophilia and ligneous conjunctivitis.

Bemerkenswerte Veröffentlichungen

Verfasser	Pubmed ID	Journal	Anwendung
Hui Shi	36376702	Clin Transl Oncol	WB,IHC
Weisi Lu	35859222	Angiogenesis	WB
Pingping Ma	33410782	Aging (Albany NY)	WB

Lagerung

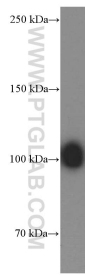
Lagerungsbedingungen:
Bei -20°C lagern. Nach dem Versand ein Jahr lang stabil
Lagerungspuffer:
PBS mit 0.02% Natriumazid und 50% Glycerin pH 7.3.
Aliquotieren ist nicht notwendig bei -20°C Lagerung

*** 20ul-Größen enthalten 0.1% BSA

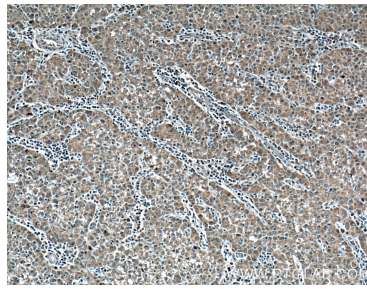
For technical support and original validation data for this product please contact:
T: 1 (888) 4PTGLAB (1-888-478-4522) (toll free in USA), or 1(312) 455-8498 (outside USA)
E: proteintech@ptglab.com
W: ptglab.com

This product is exclusively available under Proteintech Group brand and is not available to purchase from any other manufacturer.

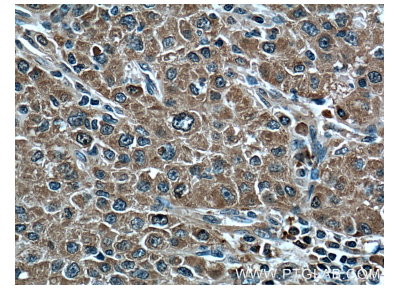
Ausgewählte Validierungsdaten



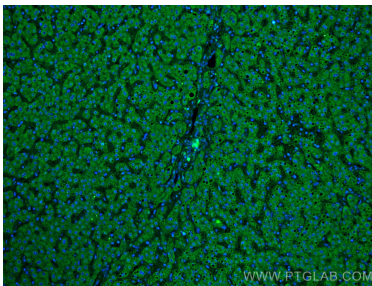
human plasma were subjected to SDS PAGE followed by western blot with 66399-1-Ig (PLG Antibody) at dilution of 1:2000 incubated at room temperature for 1.5 hours.



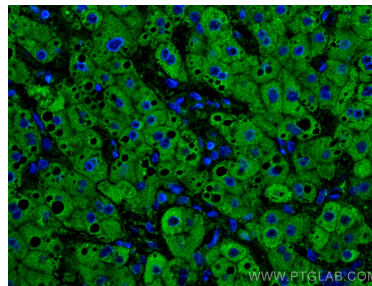
Immunohistochemical analysis of paraffin-embedded human liver cancer tissue slide using 66399-1-Ig (PLG Antibody) at dilution of 1:200 (under 10x lens). Heat mediated antigen retrieval with Tris-EDTA buffer (pH 9.0).



Immunohistochemical analysis of paraffin-embedded human liver cancer tissue slide using 66399-1-Ig (PLG Antibody) at dilution of 1:200 (under 40x lens). Heat mediated antigen retrieval with Tris-EDTA buffer (pH 9.0).



Immunofluorescent analysis of (4% PFA) fixed human liver cancer tissue using Plasminogen antibody (66399-1-Ig, Clone: 1F6A11) at dilution of 1:400 and CoraLite®488-Conjugated AffiniPure Goat Anti-Mouse IgG(H+L).



Immunofluorescent analysis of (4% PFA) fixed human liver cancer tissue using Plasminogen antibody (66399-1-Ig, Clone: 1F6A11) at dilution of 1:400 and CoraLite®488-Conjugated AffiniPure Goat Anti-Mouse IgG(H+L).