

Nur für Forschungszwecke

PSMB10 Monoklonaler Antikörper

Katalog-Nr.:66403-1-Ig



Allgemeine Informationen

Katalog-Nr.: 66403-1-Ig	GenBank-Zugangsnummer: BC017198	Reinigungsmethode: Protein-A-Reinigung
Größe: 150ul , Konzentration: 1200 µg/ml von5699 Nanodrop und 1000 µg/ml durch die Bradford-Methode mit BSA als Standard;	GeneID (NCBI): 5699	CloneNo.: 1G8C1
Wirt: Maus	Vollständiger Name: proteasome (prosome, macropain) subunit, beta type, 10	Empfohlene Verdünnungen: WB 1:1000-1:4000 IHC 1:150-1:600
Isotyp: IgG2a	Berechnete Masse: 273 aa, 29 kDa	
Immunogen Katalognummer: AG8835	Beobachtete Masse: 28 kDa	

Anwendungen

Geprüfte Anwendungen: IHC, WB,ELISA	Positivkontrollen:
Getestete Reaktivität: Hausschwein, Human, Ratte	WB : Ratten-Thymusgewebe, Hausschwein- Thymusgewebe, humanes Milzgewebe, Raji-Zellen, Ramos-Zellen, U-937-Zellen
Hinweis-IHC: Antigendemaskierung mit TE- Puffer pH 9,0 empfohlen. (*) Wahlweise kann die Antigendemaskierung auch mit Citratpuffer pH 6,0 erfolgen.	IHC : humanes Leberkarzinomgewebe,

Hintergrundinformationen

SMB10(Proteasome subunit beta type-10) is also named as LMP10, MECL1.It belongs to the peptidase T1B family and is a multicatalytic proteinase complex which is characterized by its ability to cleave peptides with Arg, Phe, Tyr, Leu, and Glu adjacent to the leaving group at neutral or slightly basic pH.

Lagerung

Lagerungsbedingungen:
Bei -20°C lagern. Nach dem Versand ein Jahr lang stabil
Lagerungspuffer:
PBS mit 0.02% Natriumazid und 50% Glycerin pH 7.3.
Aliquotieren ist nicht notwendig bei -20°C Lagerung

*** 20ul-Größen enthalten 0.1% BSA

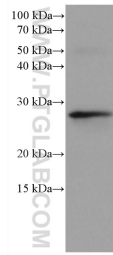
For technical support and original validation data for this product please contact:

T: 1 (888) 4PTGLAB (1-888-478-4522) (toll free
in USA), or 1(312) 455-8498 (outside USA)

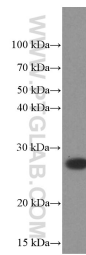
E: proteintech@ptglab.com
W: ptglab.com

This product is exclusively available under Proteintech Group brand and is not available to purchase from any other manufacturer.

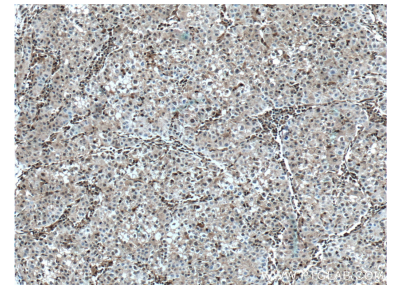
Ausgewählte Validierungsdaten



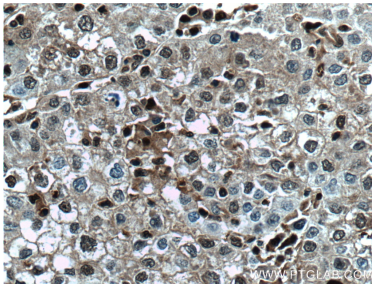
rat thymus tissue were subjected to SDS PAGE followed by western blot with 66403-1-Ig (PSMB10 antibody) at dilution of 1:2000 incubated at room temperature for 1.5 hours.



Raji cells were subjected to SDS PAGE followed by western blot with 66403-1-Ig (PSMB10 Antibody) at dilution of 1:1000 incubated at room temperature for 1.5 hours.



Immunohistochemical analysis of paraffin-embedded human liver cancer tissue slide using 66403-1-Ig (PSMB10 antibody) at dilution of 1:300 (under 10x lens. Heat mediated antigen retrieval with Tris-EDTA buffer (pH 9.0).



Immunohistochemical analysis of paraffin-embedded human liver cancer tissue slide using 66403-1-Ig (PSMB10 antibody) at dilution of 1:300 (under 40x lens. Heat mediated antigen retrieval with Tris-EDTA buffer (pH 9.0).