

Nur für Forschungszwecke

P2RX4 Monoklonaler Antikörper

Katalog-Nr.: 66416-1-Ig **1 Publikationen**



Allgemeine Informationen

Katalog-Nr.: 66416-1-Ig	GenBank-Zugangsnummer: BC033826	Reinigungsmethode: Protein-A-Reinigung
Größe: 150ul, Konzentration: 1700 µg/ml von 5025 Nanodrop und 1000 µg/ml durch die Bradford-Methode mit BSA als Standard;	GeneID (NCBI): 5025	CloneNo.: 1A5A6
Wirt: Maus	Vollständiger Name: purinergic receptor P2X, ligand-gated ion channel, 4	Empfohlene Verdünnungen: WB 1:1000-1:8000 IHC 1:50-1:500
Isotyp: IgG2b	Berechnete Masse: 388 aa, 43 kDa	
Immunogen Katalognummer: AG4445	Beobachtete Masse: 50 kDa	

Anwendungen

Geprüfte Anwendungen:

FC, IHC, WB, ELISA

In Publikationen genannte Anwendungen:

WB

Getestete Reaktivität:

Hausschwein, Human, Maus, Ratte

Zitierte Arten:

Maus

Hinweis-IHC: Antigenmaskierung mit TE-Puffer pH 9,0 empfohlen. (*) Wahlweise kann die Antigenmaskierung auch mit Citratpuffer pH 6,0 erfolgen.

Positivkontrollen:

WB: HeLa-Zellen, A549-Zellen, Hausschwein-Hirngewebe, humanes Hirngewebe, Kaninchenhirngewebe, Maushirngewebe, Neuro-2a-Zellen, Rattenhirngewebe

IHC: humanes Nierengewebe,

Hintergrundinformationen

Nucleotides, the structural subunits of the nucleic acids, are also important extracellular signaling molecules. P2 receptors are a family of cell surface receptors that mediate a wide variety of physiologic effects in response to extracellular nucleotides. These receptors fall into two classes: P2X receptors, which are ligand-gated ion channels that mediate calcium and potassium fluxes in response to ATP, and P2Y receptors, which are G protein-coupled receptors (GPCRs). P2RX4 (P2X purinoceptor 4) is a receptor for ATP acting as a ligand gated ion channel. The calculated molecular weight of P2RX4 is 43 kDa, larger apparent molecular weights of 50-80 kDa have been reported, possibly due to post-translational glycosylation (PMID: 24040145, 15262999; 29382907; 12566439).

Bemerkenswerte Veröffentlichungen

Verfasser	Pubmed ID	Journal	Anwendung
Peijie Zhong	37085966	Clin Transl Med	WB

Lagerung

Lagerungsbedingungen:

Bei -20°C lagern. Nach dem Versand ein Jahr lang stabil

Lagerungspuffer:

PBS mit 0.02% Natriumazid und 50% Glycerin pH 7.3.

Aliquotieren ist nicht notwendig bei -20°C Lagerung

***** 20ul-Größen enthalten 0.1% BSA**

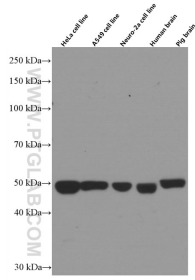
For technical support and original validation data for this product please contact:

T: 1 (888) 4PTGLAB (1-888-478-4522) (toll free in USA), or 1(312) 455-8498 (outside USA)

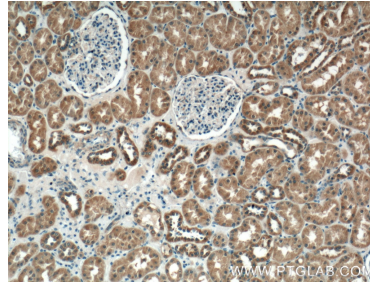
E: proteintech@ptglab.com
W: ptglab.com

This product is exclusively available under Proteintech Group brand and is not available to purchase from any other manufacturer.

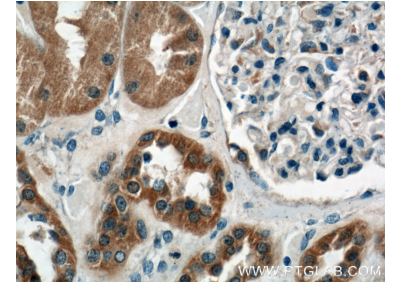
Ausgewählte Validierungsdaten



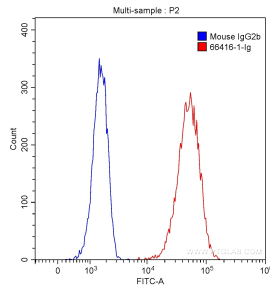
Various lysates were subjected to SDS PAGE followed by western blot with 66416-1-Ig (P2RX4 Antibody) at dilution of 1:4000 incubated at room temperature for 1.5 hours.



Immunohistochemical analysis of paraffin-embedded human kidney tissue slide using 66416-1-Ig (P2RX4 Antibody) at dilution of 1:400 (under 10x lens).



Immunohistochemical analysis of paraffin-embedded human kidney tissue slide using 66416-1-Ig (P2RX4 Antibody) at dilution of 1:400 (under 40x lens).



1X10⁶ HeLa cells were stained with 0.20 ug Anti-Human P2RX4 (66416-1-Ig, Clone:1A5A6) (red) or 0.20 ug isotype control antibody (blue) and CoraLite®488-Conjugated AffiniPure Goat Anti-Mouse IgG(H+L) with dilution 1:1000. Cells were fixed with 90% MeOH.