

Allgemeine Informationen

Katalog-Nr.: 66417-1-Ig	GenBank-Zugangsnummer: BC065564	Reinigungsmethode: Protein-G-Reinigung
Größe: 150ul , Konzentration: 1000 µg/ml von 150ul Nanodrop und 1000 µg/ml durch die Bradford-Methode mit BSA als Standard;	GeneID (NCBI): 51056	CloneNo.: 1B11B8
Wirt: Maus	Vollständiger Name: leucine aminopeptidase 3	Empfohlene Verdünnungen: WB 1:1000-1:6000 IHC 1:100-1:400 IF 1:200-1:800
Isotyp: IgG1	Berechnete Masse: 56 kDa	
Immunogen Katalognummer: AG6300	Beobachtete Masse: 56 kDa	

Anwendungen

Geprüfte Anwendungen: IF, IHC, WB, ELISA	Positivkontrollen: WB : NIH/3T3-Zellen, HeLa-Zellen, HepG2-Zellen IHC : humanes Lungengewebe, IF : HeLa-Zellen,
Getestete Reaktivität: Hausschwein, Human, Maus, Ratte	
Hinweis-IHC: Antigendemaskierung mit TE-Puffer pH 9,0 empfohlen. (*) Wahlweise kann die Antigendemaskierung auch mit Citratpuffer pH 6,0 erfolgen.	

Hintergrundinformationen

LAP3 (Leucine aminopeptidase 3) is also named as LAPEP, PEPS (peptidase S) and belongs to the peptidase M17 family. It can catalyze the removal of unsubstituted N-terminal amino-acids from various peptides and be presumably involved in the processing and regular turnover of intracellular proteins. PEPS is found in a wide variety of tissues and cultured cells but not in red cells and skin. The enzyme can utilize several di-, tri-, and tetrapeptides as substrates and is the slowest migrating of the peptidases after electrophoresis. (PMID:689684). LAP3 has two isoforms with MW of 52 and 56 kDa.

Lagerung

Lagerungsbedingungen:
Bei -20°C lagern. Nach dem Versand ein Jahr lang stabil
Lagerungspuffer:
PBS mit 0.02% Natriumazid und 50% Glycerin pH 7.3.
Aliquotieren ist nicht notwendig bei -20°C Lagerung

*** 20ul-Größen enthalten 0.1% BSA

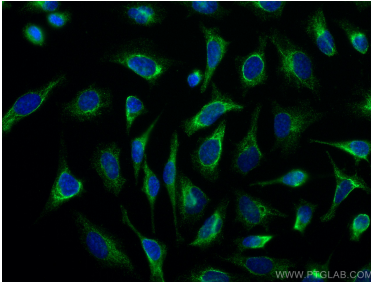
For technical support and original validation data for this product please contact:

T: 1 (888) 4PTGLAB (1-888-478-4522) (toll free in USA), or 1(312) 455-8498 (outside USA)

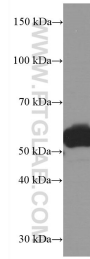
E: proteintech@ptglab.com
W: ptglab.com

This product is exclusively available under Proteintech Group brand and is not available to purchase from any other manufacturer.

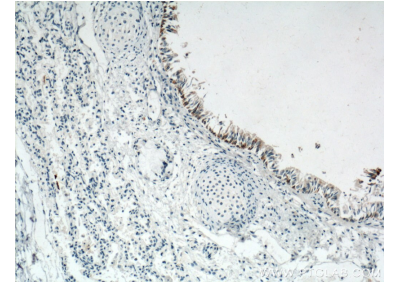
Ausgewählte Validierungsdaten



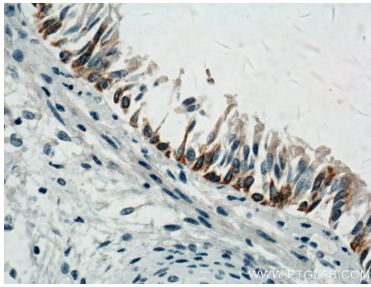
Immunofluorescent analysis of (-20°C Ethanol) fixed HeLa cells using LAP3 antibody (66417-1-Ig, Clone: 1B11B8) at dilution of 1:400 and CoraLite®488-Conjugated AffiniPure Goat Anti-Mouse IgG(H+L).



NIH/3T3 cells were subjected to SDS PAGE followed by western blot with 66417-1-Ig (LAP3 Antibody) at dilution of 1:3000 incubated at room temperature for 1.5 hours.



Immunohistochemical analysis of paraffin-embedded human lung tissue slide using 66417-1-Ig (LAP3 Antibody) at dilution of 1:200 (under 10x lens). Heat mediated antigen retrieval with Tris-EDTA buffer (pH 9.0).



Immunohistochemical analysis of paraffin-embedded human lung tissue slide using 66417-1-Ig (LAP3 Antibody) at dilution of 1:200 (under 40x lens). Heat mediated antigen retrieval with Tris-EDTA buffer (pH 9.0).