

## Allgemeine Informationen

<b>Katalog-Nr.:</b> 66418-1-Ig	<b>GenBank-Zugangsnummer:</b> BC004983	<b>Reinigungsmethode:</b> Protein-G-Reinigung
<b>Größe:</b> 150ul , Konzentration: 773 µg/ml durch die Bradford-Methode mit BSA als Standard;	<b>GeneID (NCBI):</b> 4792	<b>CloneNo.:</b> 2G6H7
<b>Wirt:</b> Maus	<b>Vollständiger Name:</b> nuclear factor of kappa light polypeptide gene enhancer in B-cells inhibitor, alpha	<b>Empfohlene Verdünnungen:</b> WB 1:5000-1:50000 IHC 1:50-1:500
<b>Isotyp:</b> IgG1	<b>Berechnete Masse:</b> 36 kDa	
<b>Immunogen Katalognummer:</b> AG22040	<b>Beobachtete Masse:</b> 36 kDa	

## Anwendungen

### Geprüfte Anwendungen:

IHC, WB, ELISA

### In Publikationen genannte Anwendungen:

WB

### Getestete Reaktivität:

Human, Maus, Ratte

### Zitierte Arten:

Hausschwein, Human, Maus, Ratte

**Hinweis-IHC: Antigenmaskierung mit TE-Puffer pH 9,0 empfohlen. (\*) Wahlweise kann die Antigenmaskierung auch mit Citratpuffer pH 6,0 erfolgen.**

### Positivkontrollen:

WB : HeLa-Zellen, C6-Zellen, HEK-293-Zellen, Jurkat-Zellen, K-562-Zellen, NIH/3T3-Zellen, PC-12-Zellen, Raji-Zellen, RAW 264.7-Zellen, ROS1728-Zellen

IHC : humanes Prostatakarzinomgewebe,

## Hintergrundinformationen

Nuclear factor of kappa light polypeptide gene enhancer in B-cells inhibitor, alpha (NFKBIA, synonyms: IKBA, MAD-3, NFKBI). NFKB1 or NFKB2 is bound to REL, RELA , or RELB to form the NFKB complex. The NFKB complex is inhibited by I-kappa-B proteins (NFKBIA or NFKBIB), which inactivate NF-kappa-B by trapping it in the cytoplasm. Phosphorylation of serine residues on the I-kappa-B proteins by kinases (IKBKA, or IKBKB) marks them for destruction via the ubiquitination pathway, thereby allowing activation of the NF-kappa-B complex. Activated NFKB complex translocates into the nucleus and binds DNA at kappa-B-binding motifs such as 5-prime GGGRNNYYCC 3-prime or 5-prime HGGARNYYCC 3-prime.

## Bemerkenswerte Veröffentlichungen

Verfasser	Pubmed ID	Journal	Anwendung
Jinxin Miao	36097701	Animal Model Exp Med	WB
Liu Yang	31485630	Mol Med Rep	WB
Li Qian	36263717	Food Funct	WB

## Lagerung

### Lagerungsbedingungen:

Bei -20°C lagern. Nach dem Versand ein Jahr lang stabil

### Lagerungspuffer:

PBS mit 0.02% Natriumazid und 50% Glycerin pH 7.3.

Aliquotieren ist nicht notwendig bei -20°C Lagerung

**\*\*\* 20ul-Größen enthalten 0.1% BSA**

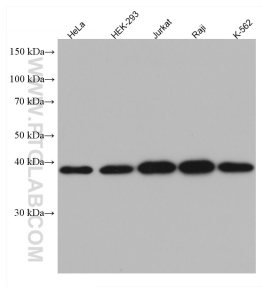
For technical support and original validation data for this product please contact:

T: 1 (888) 4PTGLAB (1-888-478-4522) (toll free in USA), or 1(312) 455-8498 (outside USA)

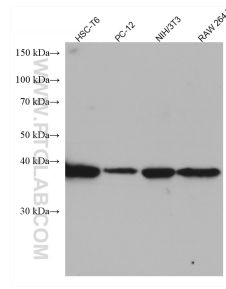
E: [proteintech@ptglab.com](mailto:proteintech@ptglab.com)  
W: [ptglab.com](http://ptglab.com)

**This product is exclusively available under Proteintech Group brand and is not available to purchase from any other manufacturer.**

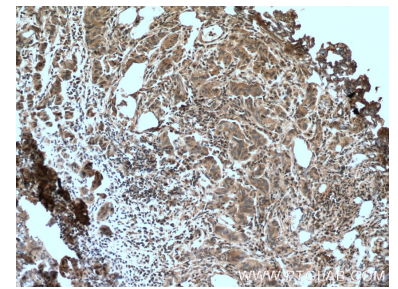
## Ausgewählte Validierungsdaten



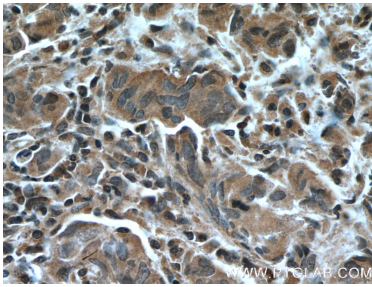
Various lysates were subjected to SDS PAGE followed by western blot with 66418-1-Ig (IkB alpha antibody) at dilution of 1:10000 incubated at room temperature for 1.5 hours.



Various lysates were subjected to SDS PAGE followed by western blot with 66418-1-Ig (IkB alpha antibody) at dilution of 1:10000 incubated at room temperature for 1.5 hours.



Immunohistochemical analysis of paraffin-embedded human prostate cancer tissue slide using 66418-1-Ig (IkB alpha antibody at dilution of 1:200 (under 10x lens). Heat mediated antigen retrieval with Tris-EDTA buffer (pH 9.0).



Immunohistochemical analysis of paraffin-embedded human prostate cancer tissue slide using 66418-1-Ig (IkB alpha antibody at dilution of 1:200 (under 40x lens). Heat mediated antigen retrieval with Tris-EDTA buffer (pH 9.0).