

Nur für Forschungszwecke

PKC Alpha Monoklonaler Antikörper



Katalog-Nr.: 66421-1-Ig **1 Publikationen**

Allgemeine Informationen

| | | |
|--|---|---|
| Katalog-Nr.: 66421-1-Ig | GenBank-Zugangsnummer: BC109274 | Reinigungsmethode: Protein-A-Reinigung |
| Größe: 150ul, Konzentration: 1000 µg/ml von 5578 Nanodrop und 1000 µg/ml durch die Bradford-Methode mit BSA als Standard; | GeneID (NCBI): 1D11F4 | CloneNo.: 1D11F4 |
| Wirt: Maus | Vollständiger Name: protein kinase C, alpha | Empfohlene Verdünnungen: WB 1:5000-1:10000 IHC 1:50-1:500 IF 1:400-1:1600 |
| Isotyp: IgG1 | Beobachtete Masse: 77 kDa | |
| Immunogen Katalognummer: AG17275 | | |

Anwendungen

| | |
|---|--|
| Geprüfte Anwendungen: IF, IHC, WB, ELISA | Positivkontrollen: WB: HeLa-Zellen, C6-Zellen, HEK-293-Zellen, RAW 264.7-Zellen IHC: humanes Lungenkarzinomgewebe, IF: HeLa-Zellen, |
| In Publikationen genannte Anwendungen: WB | |
| Getestete Reaktivität: Human, Maus, Ratte | |
| Zitierte Arten: Maus | |
| Hinweis-IHC: Antigenmaskierung mit TE-Puffer pH 9,0 empfohlen. (*) Wahlweise kann die Antigenmaskierung auch mit Citratpuffer pH 6,0 erfolgen. | |

Hintergrundinformationen

Protein kinase C (PKC) is a family of serine- and threonine-specific protein kinases that can be activated by calcium and the second messenger diacylglycerol. PKC family members phosphorylate a wide variety of protein targets and are known to be involved in diverse cellular signaling pathways. PKC family members also serve as major receptors for phorbol esters, a class of tumor promoters. Each member of the PKC family has a specific expression profile and is believed to play a distinct role in cells. PRKCA is one of the PKC family members. This kinase has been reported to play roles in many different cellular processes, such as cell adhesion, cell transformation, cell cycle checkpoint, and cell volume control. Knockout studies in mice suggest that this kinase may be a fundamental regulator of cardiac contractility and Ca(2+) handling in myocytes.

Bemerkenswerte Veröffentlichungen

| Verfasser | Pubmed ID | Journal | Anwendung |
|------------|-----------|------------------------|-----------|
| Xiujuan Li | 37084658 | Ecotoxicol Environ Saf | WB |

Lagerung

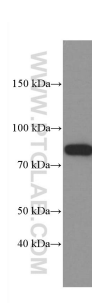
Lagerungsbedingungen:
Bei -20°C lagern. Nach dem Versand ein Jahr lang stabil
Lagerungspuffer:
PBS mit 0.02% Natriumazid und 50% Glycerin pH 7.3.
Aliquotieren ist nicht notwendig bei -20°C Lagerung

***** 20ul-Größen enthalten 0.1% BSA**

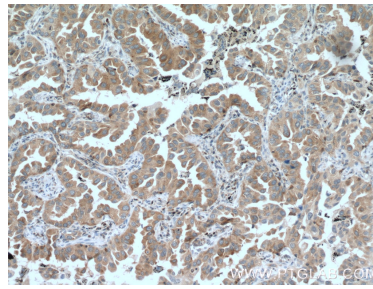
For technical support and original validation data for this product please contact:
T: 1 (888) 4PTGLAB (1-888-478-4522) (toll free in USA), or 1(312) 455-8498 (outside USA)
E: proteintech@ptglab.com
W: ptglab.com

This product is exclusively available under Proteintech Group brand and is not available to purchase from any other manufacturer.

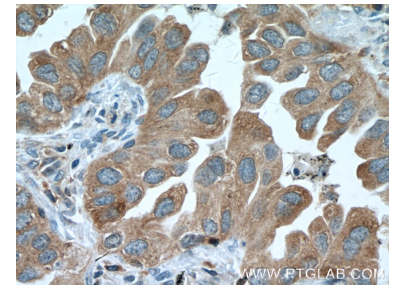
Ausgewählte Validierungsdaten



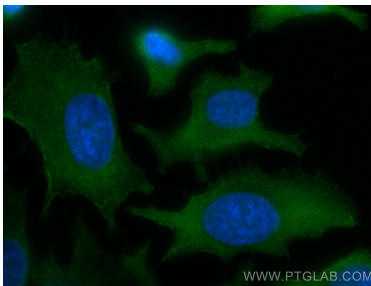
HeLa cells were subjected to SDS PAGE followed by western blot with 66421-1-Ig (PKC alpha antibody at dilution of 1:10000 incubated at room temperature for 1.5 hours.



Immunohistochemical analysis of paraffin-embedded human lung cancer tissue slide using 66421-1-Ig (PKC alpha antibody at dilution of 1:200 (under 10x lens). Heat mediated antigen retrieval with Tris-EDTA buffer (pH 9.0).



Immunohistochemical analysis of paraffin-embedded human lung cancer tissue slide using 66421-1-Ig (PKC alpha antibody at dilution of 1:200 (under 40x lens). Heat mediated antigen retrieval with Tris-EDTA buffer (pH 9.0).



Immunofluorescent analysis of (-20°C Methanol) fixed HeLa cells using PKC Alpha antibody (66421-1-Ig, Clone: 1D11F4) at dilution of 1:800 and CoraLite®488-Conjugated AffiniPure Goat Anti-Mouse IgG(H+L).