

Nur für Forschungszwecke

ERp57/ERp60 Monoklonaler Antikörper

Katalog-Nr.:66423-1-Ig



Allgemeine Informationen

Katalog-Nr.: 66423-1-Ig	GenBank-Zugangsnummer: BC014433	Reinigungsmethode: Protein-G-Reinigung
Größe: 150ul, Konzentration: 1500 µg/ml von2923 Nanodrop und 1000 µg/ml durch die Bradford-Methode mit BSA als Standard;	GeneID (NCBI): Vollständiger Name: protein disulfide isomerase family A, member 3	CloneNo.: 3G4G7 Empfohlene Verdünnungen: WB 1:2000-1:20000 IHC 1:200-1:800 IF 1:400-1:1600
Wirt: Maus	Berechnete Masse: 505 aa, 57 kDa	
Isotyp: IgG1	Beobachtete Masse: 57 kDa, 60 kDa	
Immunogen Katalognummer: AG8741		

Anwendungen

Geprüfte Anwendungen:

IF, IHC, WB, ELISA

Getestete Reaktivität:

Human, Maus, Ratte

Hinweis-IHC: Antigendemaskierung mit TE-Puffer pH 9,0 empfohlen. (*) Wahlweise kann die Antigendemaskierung auch mit Citratpuffer pH 6,0 erfolgen.

Positivkontrollen:

WB : U2OS-Zellen, HEK-293-Zellen, HeLa-Zellen, Jurkat-Zellen, K-562-Zellen, LNCaP-Zellen, NIH/3T3-Zellen, PC-12-Zellen, RAW 264.7-Zellen

IHC : humanes Lungenkarzinomgewebe, humanes Leberkarzinomgewebe

IF : HEK-293-Zellen,

Hintergrundinformationen

PDIA3, also named as P58, ER60, ERp57, ERp60, ERp61, GRP57, GRP58 and PI-PLC, is a member of the PDI family, participates in the oxidation, reduction, and isomerization of disulfide bonds for correct folding of secretory proteins before modification and transport in the endoplasmic reticulum. It is associated with apoptosis or inhibition of cancer cell growth. PDIA3 was once thought to be a phospholipase; however, it has been demonstrated that this protein actually has protein disulfide isomerase activity. It is thought that complexes of lectins and PDIA3 mediate protein folding by promoting formation of disulfide bonds in their glycoprotein substrates.

Lagerung

Lagerungsbedingungen:

Bei -20°C lagern. Nach dem Versand ein Jahr lang stabil

Lagerungspuffer:

PBS mit 0.02% Natriumazid und 50% Glycerin pH 7.3.

Aliquotieren ist nicht notwendig bei -20°C Lagerung

*** 20ul-Größen enthalten 0.1% BSA

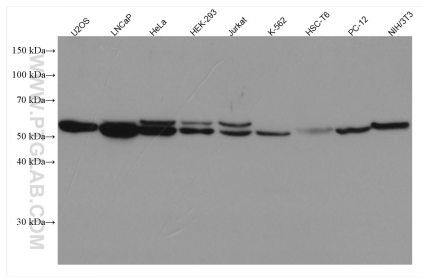
For technical support and original validation data for this product please contact:

T: 1 (888) 4PTGLAB (1-888-478-4522) (toll free in USA), or 1(312) 455-8498 (outside USA)

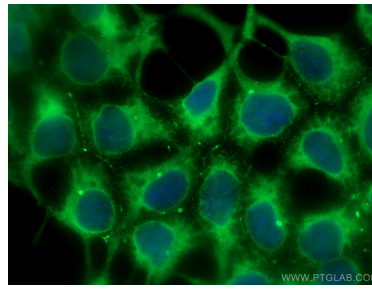
E: proteintech@ptglab.com
W: ptglab.com

This product is exclusively available under Proteintech Group brand and is not available to purchase from any other manufacturer.

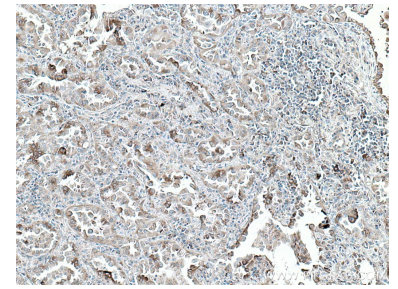
Ausgewählte Validierungsdaten



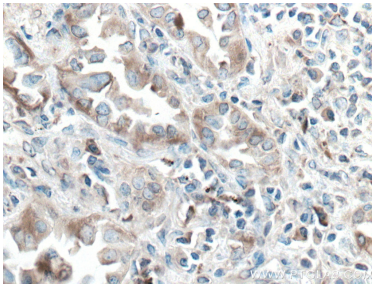
Various lysates were subjected to SDS PAGE followed by western blot with 66423-1-Ig (ERp57/ERp60 antibody) at dilution of 1:9700 incubated at room temperature for 1.5 hours.



Immunofluorescent analysis of (-20°C Methanol) fixed HEK-293 cells using ERp57/ERp60 antibody (66423-1-Ig, Clone: 3G4G7) at dilution of 1:800 and CoraLite®488-Conjugated AffiniPure Goat Anti-Mouse IgG(H+L).



Immunohistochemical analysis of paraffin-embedded human lung cancer tissue slide using 66423-1-Ig (ERp57/ERp60 antibody) at dilution of 1:400 (under 10x lens). Heat mediated antigen retrieval with Tris-EDTA buffer (pH 9.0).



Immunohistochemical analysis of paraffin-embedded human lung cancer tissue slide using 66423-1-Ig (ERp57/ERp60 antibody) at dilution of 1:400 (under 40x lens). Heat mediated antigen retrieval with Tris-EDTA buffer (pH 9.0).