

Nur für Forschungszwecke

SPARC Monoklonaler Antikörper

Katalog-Nr.: 66426-1-Ig **4 Publikationen**



Allgemeine Informationen

Katalog-Nr.: 66426-1-Ig	GenBank-Zugangsnummer: BC004974	Reinigungsmethode: Protein-A-Reinigung
Größe: 150ul, Konzentration: 1200 µg/ml durch die Nanodrop und 1000 µg/ml durch die Bradford-Methode mit BSA als Standard;	GeneID (NCBI): 1506678	CloneNo.: 1A2C1
Wirt: Maus	Vollständiger Name: secreted protein, acidic, cysteine-rich (osteonectin)	Empfohlene Verdünnungen: WB 1:2000-1:10000 IHC 1:1000-1:4000
Isotyp: IgG2a	Berechnete Masse: 35 kDa	
Immunogen Katalognummer: AG7390	Beobachtete Masse: 38 kDa, 52 kDa	

Anwendungen

Geprüfte Anwendungen: IHC, WB, ELISA	Positivkontrollen: WB : A375-Zellen, humanes Hodengewebe IHC : humanes Plazenta-Gewebe,
In Publikationen genannte Anwendungen: WB	
Getestete Reaktivität: Human	
Zitierte Arten: Human, Maus	

Hinweis-IHC: Antigendemaskierung mit TE-Puffer pH 9,0 empfohlen. (*) Wahlweise kann die Antigendemaskierung auch mit Citratpuffer pH 6,0 erfolgen.

Hintergrundinformationen

SPARC, also known as ON (Osteonectin) or BM-40 (Basement-membrane protein 40), is an extracellular glycoprotein with the calculated molecular mass of 35 kDa and the apparent molecular mass of 40-43 kDa and 50 kDa (PMID: 7495300, 12365801). SPARC belongs to a group of matricellular proteins defined as secreted components that do not contribute directly to the formation of structural elements but serve to modulate cell-matrix interactions and cellular functions (PMID: 7542656; 12231357). SPARC is expressed at high levels in bone tissue, is distributed widely in many other tissues and cell types, and is associated generally with tissues undergoing morphogenesis, remodeling and wound repair (PMID: 10567433). It elicits changes in cell shape, inhibits cell-cycle progression, and influences the synthesis of extracellular matrix (PMID: 12721366). Altered expression of SPARC has been reported in a variety of cancers, which include breast, ovarian, colorectal, and pancreatic cancer as well as melanoma and glioblastomas (PMID: 18849185).

Bemerkenswerte Veröffentlichungen

Verfasser	Pubmed ID	Journal	Anwendung
Liyang Luo	35721704	Front Endocrinol (Lausanne)	WB
Wei Huang	34089726	Exp Cell Res	WB
Bo Li	31819181	Br J Cancer	WB

Lagerung

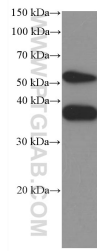
Lagerungsbedingungen:
Bei -20°C lagern. Nach dem Versand ein Jahr lang stabil
Lagerungspuffer:
PBS mit 0.02% Natriumazid und 50% Glycerin pH 7.3.
Aliquotieren ist nicht notwendig bei -20°C Lagerung

***** 20ul-Größen enthalten 0.1% BSA**

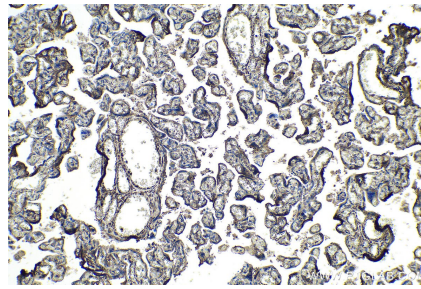
For technical support and original validation data for this product please contact:
T: 1 (888) 4PTGLAB (1-888-478-4522) (toll free in USA), or 1(312) 455-8498 (outside USA)
E: proteintech@ptglab.com
W: ptglab.com

This product is exclusively available under Proteintech Group brand and is not available to purchase from any other manufacturer.

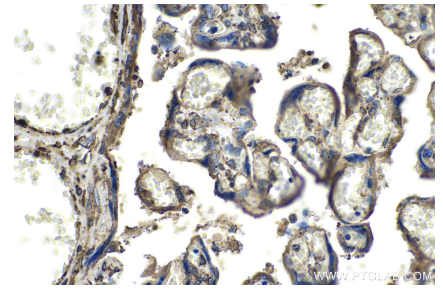
Ausgewählte Validierungsdaten



A375 cells were subjected to SDS PAGE followed by western blot with 66426-1-Ig (SPARC Antibody) at dilution of 1:5000 incubated at room temperature for 1.5 hours.



Immunohistochemical analysis of paraffin-embedded human placenta tissue slide using 66426-1-Ig (SPARC antibody) at dilution of 1:2000 (under 10x lens). Heat mediated antigen retrieval with Tris-EDTA buffer (pH 9.0).



Immunohistochemical analysis of paraffin-embedded human placenta tissue slide using 66426-1-Ig (SPARC antibody) at dilution of 1:2000 (under 40x lens). Heat mediated antigen retrieval with Tris-EDTA buffer (pH 9.0).