

## Allgemeine Informationen

<b>Katalog-Nr.:</b> 66429-1-Ig	<b>GenBank-Zugangsnummer:</b> BC047876	<b>Reinigungsmethode:</b> Protein-A-Reinigung
<b>Größe:</b> 150ul , Konzentration: 1600 µg/ml von5582 Nanodrop und 1000 µg/ml durch die Bradford-Methode mit BSA als Standard;	<b>GeneID (NCBI):</b> protein kinase C, gamma	<b>CloneNo.:</b> 2F4B9
<b>Wirt:</b> Maus	<b>Berechnete Masse:</b> 78 kDa	<b>Empfohlene Verdünnungen:</b> WB 1:2000-1:5000 IHC 1:50-1:500 IF 1:50-1:500
<b>Isotyp:</b> IgG2a	<b>Beobachtete Masse:</b> 78 kDa	
<b>Immunogen Katalognummer:</b> AG5910		

## Anwendungen

<b>Geprüfte Anwendungen:</b> FC, IF, IHC, WB, ELISA	<b>Positivkontrollen:</b> WB : HeLa-Zellen, Hausschwein-Hirngewebe, HEK-293-Zellen, humanes Cerebellum-Gewebe, Maushirngewebe, Rattenhirngewebe
<b>Getestete Reaktivität:</b> Hausschwein, Human, Maus, Ratte	<b>IHC :</b> humanes Hirngewebe,
<b>Hinweis-IHC: Antigenmaskierung mit TE-Puffer pH 9,0 empfohlen. (*) Wahlweise kann die Antigenmaskierung auch mit Citratpuffer pH 6,0 erfolgen.</b>	<b>IF :</b> SH-SY5Y-Zellen,

## Hintergrundinformationen

Protein kinase C (PKC) is a family of serine- and threonine-specific protein kinases that can be activated by calcium and second messenger diacylglycerol. PKC family members phosphorylate a wide variety of protein targets and are known to be involved in diverse cellular signaling pathways. PKC gamma is a neuron-specific member of the classical PKCs and is activated and translocated to subcellular regions as a result of various stimuli, including diacylglycerol synthesis, increased intracellular Ca(2+) and phorbol esters. Defects in this protein have been associated with spinocerebellar ataxia type 14 (SCA14), an autosomal dominant neurodegenerative disease.

## Lagerung

**Lagerungsbedingungen:**  
Bei -20°C lagern. Nach dem Versand ein Jahr lang stabil  
**Lagerungspuffer:**  
PBS mit 0.02% Natriumazid und 50% Glycerin pH 7.3.  
**Aliquotieren ist nicht notwendig bei -20°C Lagerung**

\*\*\* 20ul-Größen enthalten 0.1% BSA

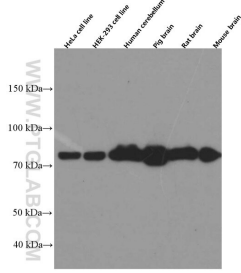
For technical support and original validation data for this product please contact:

T: 1 (888) 4PTGLAB (1-888-478-4522) (toll free  
in USA), or 1(312) 455-8498 (outside USA)

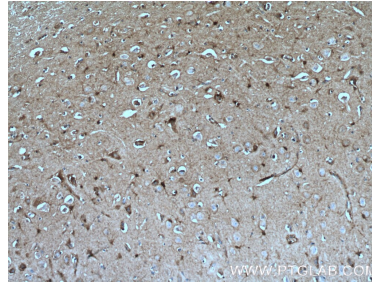
E: proteintech@ptglab.com  
W: ptglab.com

This product is exclusively available under Proteintech Group brand and is not available to purchase from any other manufacturer.

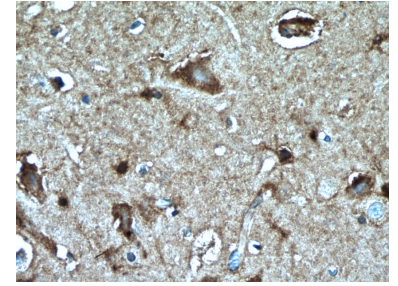
## Ausgewählte Validierungsdaten



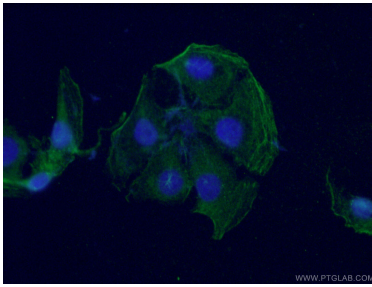
Various lysates were subjected to SDS PAGE followed by western blot with 66429-1-Ig (PKC gamma antibody at dilution of 1:5000 incubated at room temperature for 1.5 hours.



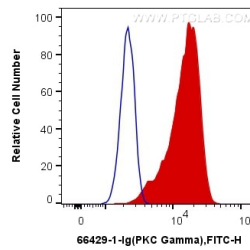
Immunohistochemical analysis of paraffin-embedded human brain tissue slide using 66429-1-Ig (PKC gamma antibody at dilution of 1:200 (under 10x lens). Heat mediated antigen retrieval with Tris-EDTA buffer (pH 9.0).



Immunohistochemical analysis of paraffin-embedded human brain tissue slide using 66429-1-Ig (PKC gamma antibody at dilution of 1:200 (under 40x lens). Heat mediated antigen retrieval with Tris-EDTA buffer (pH 9.0).



Immunofluorescent analysis of (-20°C Ethanol) fixed SH-SY5Y cells using 66429-1-Ig (PKC gamma antibody) at dilution of 1:100 and Alexa Fluor 488-conjugated AffiniPure Goat Anti-Mouse IgG(H+L).



1x10<sup>6</sup> SH-SY5Y cells were intracellularly stained with 0.2 ug Anti-Human PKC Gamma (66429-1-Ig, Clone:2F4B9) and CoraLite®488-Conjugated AffiniPure Goat Anti-Mouse IgG(H+L) at dilution 1:1000 (red), or 0.2 ug Control Antibody. Cells were fixed with 4% PFA and permeabilized with Flow Cytometry Perm Buffer (PF00011-C).