

Allgemeine Informationen

Katalog-Nr.: 66431-1-Ig	GenBank-Zugangsnummer: BC018549	Reinigungsmethode: Protein-G-Reinigung
Größe: 150ul , Konzentration: 1600 µg/ml von5341 Nanodrop und 1000 µg/ml durch die Bradford-Methode mit BSA als Standard;	GeneID (NCBI): pleckstrin	CloneNo.: 1D5C2
Wirt: Maus	Vollständiger Name: pleckstrin	Empfohlene Verdünnungen: WB 1:2000-1:20000 IHC 1:50-1:500 IF 1:200-1:800
Isotyp: IgG1	Berechnete Masse: 350 aa, 40 kDa	
Immunogen Katalognummer: AG3187	Beobachtete Masse: 40-47 kDa	

Anwendungen

Geprüfte Anwendungen: IF, IHC, WB, ELISA	Positivkontrollen:
Getestete Reaktivität: Hausschwein, Human	WB : HL-60-Zellen, Hausschwein-Milzgewebe, THP-1-Zellen, U-937-Zellen
Hinweis-IHC: Antigenmaskierung mit TE-Puffer pH 9,0 empfohlen. (*) Wahlweise kann die Antigenmaskierung auch mit Citratpuffer pH 6,0 erfolgen.	IHC : humanes Kolonkarzinomgewebe,
	IF : Mausmilzgewebe,

Hintergrundinformationen

PLEK (pleckstrin; also known as p47) was originally identified as the major PKC substrate in platelets and later is found to be expressed in all cells of the hemopoietic system. Through two pleckstrin homology (PH) domains at its N and C termini, PLEK may interact with various protein and/or lipid ligands and serve as an intracellular adaptor/targeting protein. Predominantly cytosolic in unstimulated cells, PLEK would undergo transient redistribution to phagosomal membrane in response to stimuli. PLEK has been found to be hyperphosphorylated in diabetic mononuclear phagocytes and promote proinflammatory cytokine secretion in diabetes. (10477609, 17579087)

Lagerung

Lagerungsbedingungen:
Bei -20°C lagern. Nach dem Versand ein Jahr lang stabil

Lagerungspuffer:
PBS mit 0.02% Natriumazid und 50% Glycerin pH 7.3.

Aliquotieren ist nicht notwendig bei -20°C Lagerung

*** 20ul-Größen enthalten 0.1% BSA

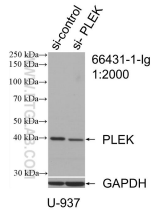
For technical support and original validation data for this product please contact:

T: 1 (888) 4PTGLAB (1-888-478-4522) (toll free in USA), or 1(312) 455-8498 (outside USA)

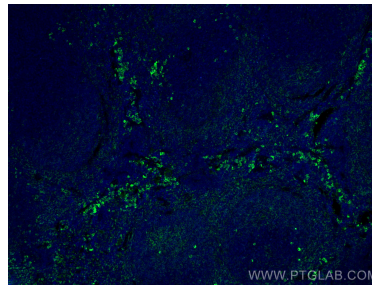
E: proteintech@ptglab.com
W: ptglab.com

This product is exclusively available under Proteintech Group brand and is not available to purchase from any other manufacturer.

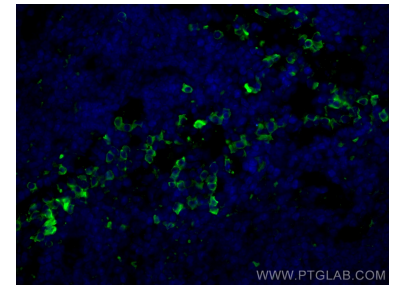
Ausgewählte Validierungsdaten



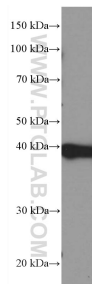
WB result of PLEK antibody (66431-1-Ig; 1:2000; incubated at room temperature for 1.5 hours) with sh-Control and sh-PLEK transfected U-937 cells.



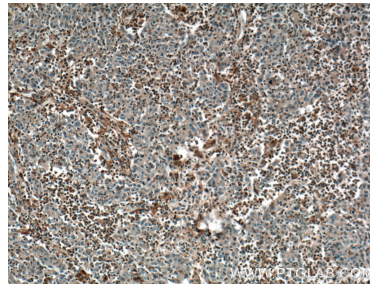
Immunofluorescent analysis of (4% PFA) fixed mouse spleen tissue using PLEK antibody (66431-1-Ig, Clone: 1D5C2) at dilution of 1:400 and CoraLite®488-Conjugated AffiniPure Goat Anti-Mouse IgG(H+L).



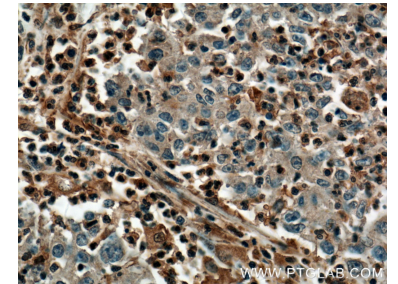
Immunofluorescent analysis of (4% PFA) fixed mouse spleen tissue using PLEK antibody (66431-1-Ig, Clone: 1D5C2) at dilution of 1:400 and CoraLite®488-Conjugated AffiniPure Goat Anti-Mouse IgG(H+L).



HL-60 cells were subjected to SDS PAGE followed by western blot with 66431-1-Ig (PLEK Antibody) at dilution of 1:5000 incubated at room temperature for 1.5 hours.



Immunohistochemical analysis of paraffin-embedded human colon cancer tissue slide using 66431-1-Ig (PLEK Antibody) at dilution of 1:500 (under 10x lens). Heat mediated antigen retrieval with Tris-EDTA buffer (pH 9.0).



Immunohistochemical analysis of paraffin-embedded human colon cancer tissue slide using 66431-1-Ig (PLEK Antibody) at dilution of 1:500 (under 40x lens). Heat mediated antigen retrieval with Tris-EDTA buffer (pH 9.0).