

Allgemeine Informationen

Katalog-Nr.: 66434-1-Ig	GenBank-Zugangsnummer: BC000317	Reinigungsmethode: Protein-G-Reinigung
Größe: 150ul , Konzentration: 1300 µg/ml von2664 Nanodrop und 1000 µg/ml durch die Bradford-Methode mit BSA als Standard;	GeneID (NCBI): Vollständiger Name: GDP dissociation inhibitor 1	CloneNo.: 4E1G1 Empfohlene Verdünnungen: WB 1:5000-1:20000 IHC 1:500-1:1000 IF 1:50-1:500
Wirt: Maus	Berechnete Masse: 51 kDa	
Isotyp: IgG1	Beobachtete Masse: 55 kDa	
Immunogen Katalognummer: AG17511		

Anwendungen

Geprüfte Anwendungen: IF, IHC, WB,ELISA	Positivkontrollen: WB : U-251-Zellen, HEK-293-Zellen, Maushirngewebe, Neuro-2a-Zellen, Rattenhirngewebe IHC : humanes Mammakarzinomgewebe, IF : MCF-7-Zellen,
In Publikationen genannte Anwendungen: IHC	
Getestete Reaktivität: Hausschwein, Human, Maus, Ratte	
Zitierte Arten: Human	
Hinweis-IHC: Antigenmaskierung mit TE-Puffer pH 9,0 empfohlen. (*) Wahlweise kann die Antigenmaskierung auch mit Citratpuffer pH 6,0 erfolgen.	

Hintergrundinformationen

GDP dissociation inhibitors (GDIs) are proteins that regulate the GDP-GTP exchange reaction of members of the rab family. GDIs can bind and release GDP-bound Rab proteins from membranes. Two GDI proteins towards different Rab proteins have been identified. GDI1 interacts with almost all of the Rab proteins, while GDI2 interacts with Rab11 but not Rab3A. GDI1 is expressed primarily in neural and sensory tissues and also in secretory cells, displaying a diffuse, cytoplasmic distribution in cells. It runs as a 55 kDa protein in SDS-PAGE. (PMID: 7929030,PMID: 19570034)

Bemerkenswerte Veröffentlichungen

Verfasser	Pubmed ID	Journal	Anwendung
Peng Chen	32382060	Signal Transduct Target Ther	IHC
Xiao Xie	34515625	Bioengineered	IHC

Lagerung

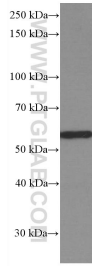
Lagerungsbedingungen:
Bei -20°C lagern. Nach dem Versand ein Jahr lang stabil
Lagerungspuffer:
PBS mit 0.02% Natriumazid und 50% Glycerin pH 7.3.
Aliquotieren ist nicht notwendig bei -20°C Lagerung

***** 20ul-Größen enthalten 0.1% BSA**

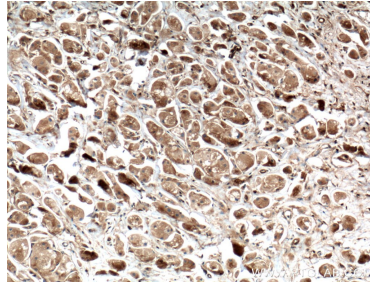
For technical support and original validation data for this product please contact:
T: 1 (888) 4PTGLAB (1-888-478-4522) (toll free in USA), or 1(312) 455-8498 (outside USA)
E: proteintech@ptglab.com
W: ptglab.com

This product is exclusively available under Proteintech Group brand and is not available to purchase from any other manufacturer.

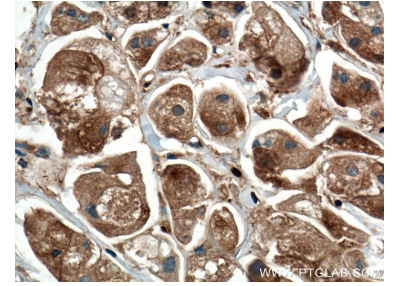
Ausgewählte Validierungsdaten



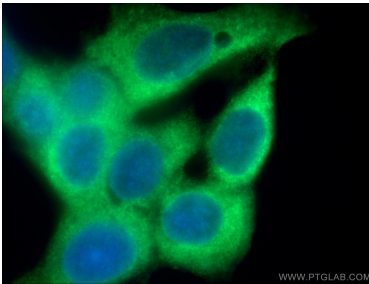
U-251 cells were subjected to SDS PAGE followed by western blot with 66434-1-Ig (GDI1 Antibody) at dilution of 1:20000 incubated at room temperature for 1.5 hours.



Immunohistochemical analysis of paraffin-embedded human breast cancer tissue slide using 66434-1-Ig (GDI1 antibody) at dilution of 1:1000 (under 10x lens. Heat mediated antigen retrieval with Tris-EDTA buffer (pH 9.0).



Immunohistochemical analysis of paraffin-embedded human breast cancer tissue slide using 66434-1-Ig (GDI1 antibody) at dilution of 1:1000 (under 40x lens. Heat mediated antigen retrieval with Tris-EDTA buffer (pH 9.0).



Immunofluorescent analysis of (-20°C Ethanol) fixed MCF-7 cells using 66434-1-Ig (GDI1 antibody) at dilution of 1:100 and Alexa Fluor 488-conjugated AffiniPure Goat Anti-Mouse IgG(H+L).