

Allgemeine Informationen

Katalog-Nr.: 66439-1-Ig	GenBank-Zugangsnummer: BC050375	Reinigungsmethode: Protein-G-Reinigung
Größe: 150ul , Konzentration: 1300 µg/ml von30820 Nanodrop und 1000 µg/ml durch die Bradford-Methode mit BSA als Standard;	GeneID (NCBI): 30820	CloneNo.: 3D6C1
Wirt: Maus	Vollständiger Name: Kv channel interacting protein 1	Empfohlene Verdünnungen: WB 1:1000-1:4000 IHC 1:50-1:500 IF 1:200-1:800
Isotyp: IgG1	Berechnete Masse: 227 aa, 27 kDa	
Immunogen Katalognummer: AG5494	Beobachtete Masse: 25 kDa	

Anwendungen

Geprüfte Anwendungen: IF, IHC, WB, ELISA	Positivkontrollen:
Getestete Reaktivität: Human	WB : humanes Cerebellum-Gewebe, fetales humanes Hirngewebe, humanes Milzgewebe
Hinweis-IHC: Antigendemaskierung mit TE-Puffer pH 9,0 empfohlen. (*) Wahlweise kann die Antigendemaskierung auch mit Citratpuffer pH 6,0 erfolgen.	IHC : humanes Hirngewebe, humanes Herzgewebe
	IF : Maushirngewebe,

Hintergrundinformationen

Human K(v) channel interacting protein 1 (KCHIP1) is a new member of the neural calcium binding protein superfamily. Members of the KCNIP family are small calcium binding proteins. They all have EF-hand-like domains, and differ from each other in the N-terminus. They are integral subunit components of native Kv4 channel complexes. They may regulate A-type currents, and hence neuronal excitability, in response to changes in intracellular calcium. KCHIP1 is a neuronal calcium sensor protein that is predominantly expressed at GABAergic synapses and it has been related with modulation of K(+) channels, GABAergic transmission and cell death.

Lagerung

Lagerungsbedingungen:
Bei -20°C lagern. Nach dem Versand ein Jahr lang stabil
Lagerungspuffer:
PBS mit 0.02% Natriumazid und 50% Glycerin pH 7.3.
Aliquotieren ist nicht notwendig bei -20°C Lagerung

*** 20ul-Größen enthalten 0.1% BSA

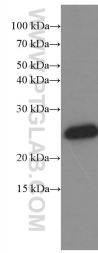
For technical support and original validation data for this product please contact:

T: 1 (888) 4PTGLAB (1-888-478-4522) (toll free
in USA), or 1(312) 455-8498 (outside USA)

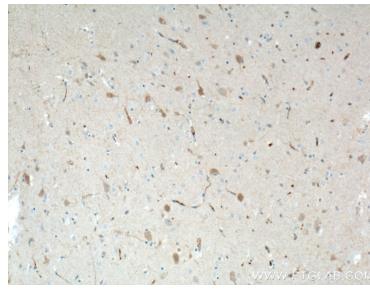
E: proteintech@ptglab.com
W: ptglab.com

This product is exclusively available under Proteintech Group brand and is not available to purchase from any other manufacturer.

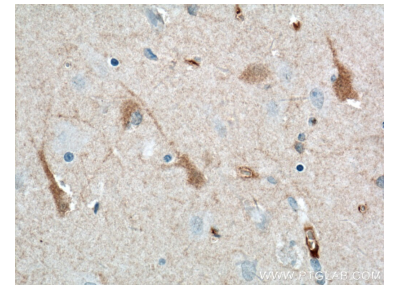
Ausgewählte Validierungsdaten



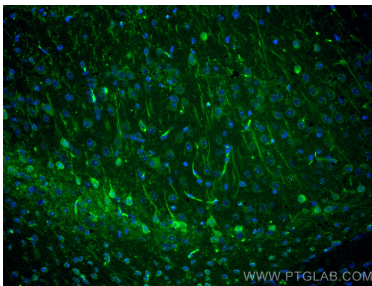
human cerebellum tissue were subjected to SDS PAGE followed by western blot with 66439-1-Ig (KChIP1 antibody at dilution of 1:2000 incubated at room temperature for 1.5 hours.



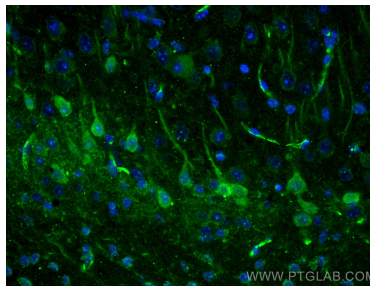
Immunohistochemical analysis of paraffin-embedded human brain tissue slide using 66439-1-Ig (KChIP1 antibody at dilution of 1:200 (under 10x lens). Heat mediated antigen retrieval with Tris-EDTA buffer (pH 9.0).



Immunohistochemical analysis of paraffin-embedded human brain tissue slide using 66439-1-Ig (KChIP1 antibody at dilution of 1:200 (under 40x lens). Heat mediated antigen retrieval with Tris-EDTA buffer (pH 9.0).



Immunofluorescent analysis of (4% PFA) fixed mouse brain tissue using KChIP1 antibody (66439-1-Ig, Clone: 3D6C1) at dilution of 1:400 and CoraLite®488-Conjugated AffiniPure Goat Anti-Mouse IgG(H+L).



Immunofluorescent analysis of (4% PFA) fixed mouse brain tissue using KChIP1 antibody (66439-1-Ig, Clone: 3D6C1) at dilution of 1:400 and CoraLite®488-Conjugated AffiniPure Goat Anti-Mouse IgG(H+L).