

Nur für Forschungszwecke

# CCM3/PDCD10 Monoklonaler Antikörper



Katalog-Nr.: 66440-1-Ig

Vorgestelltes Produkt

## Allgemeine Informationen

Katalog-Nr.:

66440-1-Ig

Größe:

150ul, Konzentration: 1300 µg/ml von 11235

Nanodrop und 1000 µg/ml durch die Bradford-Methode mit BSA als Standard;

Wirt:

Maus

Isotyp:

IgG1

Immunogen Katalognummer:

AG0348

GenBank-Zugangsnummer:

BC002506

GeneID (NCBI):

11235

Vollständiger Name:

programmed cell death 10

Berechnete Masse:

25 kDa

Beobachtete Masse:

25-30 kDa

Reinigungsmethode:

Protein-G-Reinigung

CloneNo.:

1E5A8

Empfohlene Verdünnungen:

WB 1:1000-1:6000

IHC 1:50-1:500

## Anwendungen

Geprüfte Anwendungen:

IHC, WB, ELISA

Getestete Reaktivität:

Human

**Hinweis-IHC: Antigenmaskierung mit TE-Puffer pH 9,0 empfohlen. (\*) Wahlweise kann die Antigenmaskierung auch mit Citratpuffer pH 6,0 erfolgen.**

Positivkontrollen:

WB: Jurkat-Zellen, Ramos-Zellen, U-251-Zellen

IHC: humanes Kolonkarzinomgewebe, humanes Leberkarzinomgewebe

## Hintergrundinformationen

PDCD10, also named CCM3 and TFAR15, belongs to the PDCD10 family. PDCD10 promotes cell proliferation, increases MAPK activity and modulates apoptotic pathways. PDCD10 is important for cell migration and for normal structure and assembly of the Golgi complex. PDCD10 is required for normal angiogenesis, vasculogenesis and hematopoiesis during embryonic development, moreover, defects in PDCD10 showed abnormal cardiovascular development.

## Lagerung

Lagerungsbedingungen:

Bei -20°C lagern. Nach dem Versand ein Jahr lang stabil

Lagerungspuffer:

PBS mit 0.02% Natriumazid und 50% Glycerin pH 7.3.

Aliquotieren ist nicht notwendig bei -20°C Lagerung

\*\*\* 20ul-Größen enthalten 0.1% BSA

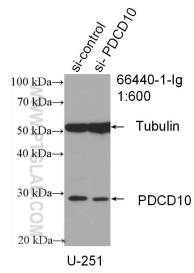
For technical support and original validation data for this product please contact:

T: 1 (888) 4PTGLAB (1-888-478-4522) (toll free in USA), or 1(312) 455-8498 (outside USA)

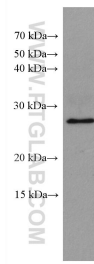
E: proteintech@ptglab.com  
W: ptglab.com

This product is exclusively available under Proteintech Group brand and is not available to purchase from any other manufacturer.

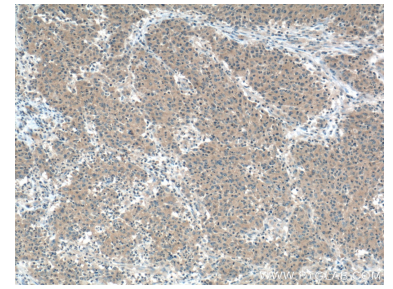
## Ausgewählte Validierungsdaten



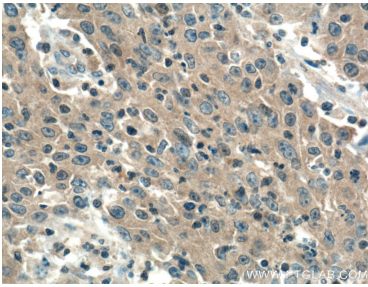
WB result of CCM3/PDCD10 antibody (66440-1-Ig; 1:600; incubated at room temperature for 1.5 hours) with sh-Control and sh-PDCD10 transfected U-251 cells.



Jurkat cells were subjected to SDS PAGE followed by western blot with 66440-1-Ig (CCM3/PDCD10 antibody) at dilution of 1:3000 incubated at room temperature for 1.5 hours.



Immunohistochemical analysis of paraffin-embedded human colon cancer tissue slide using 66440-1-Ig (CCM3/PDCD10 Antibody) at dilution of 1:200 (under 10x lens). Heat mediated antigen retrieval with Tris-EDTA buffer (pH 9.0).



Immunohistochemical analysis of paraffin-embedded human colon cancer tissue slide using 66440-1-Ig (PDCD10 Antibody) at dilution of 1:200 (under 40x lens). Heat mediated antigen retrieval with Tris-EDTA buffer (pH 9.0).