

Allgemeine Informationen

Katalog-Nr.: 66452-1-Ig	GenBank-Zugangsnummer: BC111712	Reinigungsmethode: Protein-A-Reinigung
Größe: 150ul, Konzentration: 2000 µg/ml von7082 Nanodrop;	GeneID (NCBI): 7082	CloneNo.: 1G4A1
Wirt: Maus	Vollständiger Name: tight junction protein 1 (zona occludens 1)	Empfohlene Verdünnungen: WB 1:1000-1:6000 IHC 1:200-1:800 IF 1:750-1:3000
Isotyp: IgG1	Berechnete Masse: 1748 aa, 195 kDa	
Immunogen Katalognummer: AG16454	Beobachtete Masse: 230 kDa	

Anwendungen

Geprüfte Anwendungen:

IF, IHC, WB, ELISA

In Publikationen genannte Anwendungen:

IF, IHC, WB

Getestete Reaktivität:

Human, Hund

Zitierte Arten:

Hausschwein, Human

Hinweis-IHC: Antigendemaskierung mit TE-Puffer pH 9,0 empfohlen. (*) Wahlweise kann die Antigendemaskierung auch mit Citratpuffer pH 6,0 erfolgen.

Positivkontrollen:

WB: HUVEC-Zellen, A431-Zellen, COLO 320-Zellen, HEK-293-Zellen, HeLa-Zellen, HepG2-Zellen, LNCaP-Zellen

IHC: humanes Pankreaskarzinomgewebe, humanes Prostatakarzinomgewebe

IF: MCF-7-Zellen, humanes Mammakarzinomgewebe, MDCK-Zellen

Hintergrundinformationen

Tight junction (or zonula occludens) form the continuous intercellular barrier between epithelial and endothelial cells, which is required to separate tissue spaces and regulate selective movement of solutes across the epithelium and endothelium (PMID: 20066090). ZO-1 (also known as TJP1) is a peripheral membrane phosphoprotein located on the cytoplasmic face and is expressed in tight junctions of both epithelial and endothelial cells (PMID: 3528172). It binds the transmembrane proteins occludin and the claudins linking them to cytoskeletal actin (PMID: 17418867). ZO-1 belongs to a family of multidomain proteins known as the membrane-associated guanylate kinase homologs (MAGUKs). It is a pivotal tight junction protein and may be involved in signalling mechanisms regulating cell proliferation and differentiation (PMID: 22782886).

Bemerkenswerte Veröffentlichungen

Verfasser	Pubmed ID	Journal	Anwendung
Dayun Feng	36179025	Sci Adv	WB
Chengmei Huang	34583750	J Exp Clin Cancer Res	IF
Yingying Wang	36174863	Int J Biol Macromol	WB,IF

Lagerung

Lagerungsbedingungen:

Bei -20°C lagern. Nach dem Versand ein Jahr lang stabil

Lagerungspuffer:

PBS mit 0.02% Natriumazid und 50% Glycerin pH 7.3.

Aliquotieren ist nicht notwendig bei -20°C Lagerung

***** 20ul-Größen enthalten 0.1% BSA**

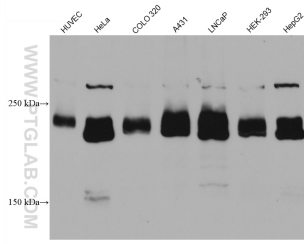
For technical support and original validation data for this product please contact:

T: 1 (888) 4PTGLAB (1-888-478-4522) (toll free in USA), or 1(312) 455-8498 (outside USA)

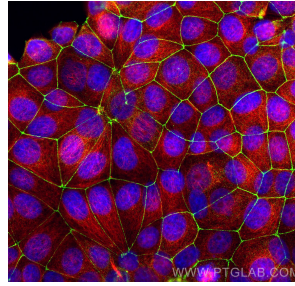
E: proteintech@ptglab.com
W: ptglab.com

This product is exclusively available under Proteintech Group brand and is not available to purchase from any other manufacturer.

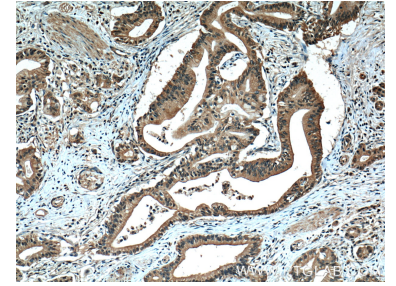
Ausgewählte Validierungsdaten



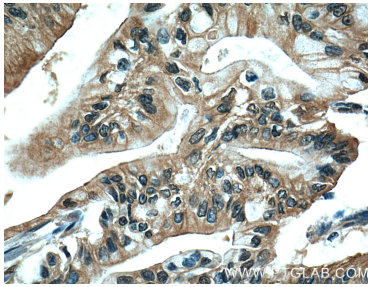
Various lysates were subjected to SDS PAGE followed by western blot with 66452-1-Ig (ZO-1 antibody) at dilution of 1:3000 incubated at room temperature for 1.5 hours.



Immunofluorescent analysis of (4% PFA) fixed MCF-7 cells using ZO-1 antibody (66452-1-Ig, Clone: 1G4A1) at dilution of 1:1500 and CoraLite®488-Conjugated AffiniPure Goat Anti-Mouse IgG(H+L), Alpha Tubulin antibody (11224-1-AP, red).



Immunohistochemical analysis of paraffin-embedded human pancreas cancer tissue slide using 66452-1-Ig (ZO-1 antibody) at dilution of 1:400 (under 10x lens. Heat mediated antigen retrieval with Tris-EDTA buffer (pH 9.0).



Immunohistochemical analysis of paraffin-embedded human pancreas cancer tissue slide using 66452-1-Ig (ZO-1 antibody) at dilution of 1:400 (under 40x lens. Heat mediated antigen retrieval with Tris-EDTA buffer (pH 9.0).