

## Allgemeine Informationen

<b>Katalog-Nr.:</b> 66455-1-Ig	<b>GenBank-Zugangsnummer:</b> BC094761	<b>Reinigungsmethode:</b> Protein-G-Reinigung
<b>Größe:</b> 150ul , Konzentration: 2300 µg/ml von1956 Nanodrop und 1000 µg/ml durch die Bradford-Methode mit BSA als Standard;	<b>GeneID (NCBI):</b> 1956	<b>CloneNo.:</b> 2A2H10
<b>Wirt:</b> Maus	<b>Vollständiger Name:</b> epidermal growth factor receptor (erythroblastic leukemia viral (v-erb- b) oncogene homolog, avian)	<b>Empfohlene Verdünnungen:</b> WB 1:5000-1:50000 IHC 1:1000-1:4000
<b>Isotyp:</b> IgG1	<b>Berechnete Masse:</b> 1210 aa, 134 kDa	
<b>Immunogen Katalognummer:</b> AG24947	<b>Beobachtete Masse:</b> 145-165 kDa	

## Anwendungen

### Geprüfte Anwendungen:

IHC, WB, ELISA

### In Publikationen genannte Anwendungen:

IF, IHC, WB

### Getestete Reaktivität:

Human

### Zitierte Arten:

Human

**Hinweis-IHC: Antigendemaskierung mit TE-Puffer pH 9,0 empfohlen. (\*) Wahlweise kann die Antigendemaskierung auch mit Citratpuffer pH 6,0 erfolgen.**

### Positivkontrollen:

**WB** : A431-Zellen, A549-Zellen, EC109-Zellen, HeLa-Zellen, HepG2-Zellen, LNCaP-Zellen, MDA-MB-231-Zellen, MDA-MB-468-Zellen, PC-3-Zellen, SKOV-3-Zellen

**IHC** : humanes Tonsillitisgewebe, humanes Gliomgewebe, humanes Hautkrebsgewebe, humanes Kolonkarzinomgewebe, humanes Lungenkarzinomgewebe, humanes Mammakarzinomgewebe, humanes Zervixkarzinomgewebe

## Hintergrundinformationen

EGFR, also named as ERBB1, is a cell-surface receptor for members of the epidermal growth factor family (EGF-family) of extracellular protein ligands. Binding of the protein to a ligand induces receptor dimerization and tyrosine autophosphorylation and leads to cell proliferation. The gene resides on chromosome 7p12, encoding a 170 kDa membrane-associated glycoprotein. Recent studies have shown EGFR plays a critical role in cancer development and progression, including cell proliferation, apoptosis, angiogenesis, and metastatic spread. Mutations in this gene are associated with lung cancer.

## Bemerkenswerte Veröffentlichungen

Verfasser	Pubmed ID	Journal	Anwendung
Dali Zhao	3455268	FEBS Open Bio	WB
Huilan Li	33076176	Talanta	WB,IF
Jiarui Cui	36187764	Front Physiol	IHC

## Lagerung

### Lagerungsbedingungen:

Bei -20°C lagern. Nach dem Versand ein Jahr lang stabil

### Lagerungspuffer:

PBS mit 0.02% Natriumazid und 50% Glycerin pH 7.3.

Aliquotieren ist nicht notwendig bei -20°C Lagerung

**\*\*\* 20ul-Größen enthalten 0.1% BSA**

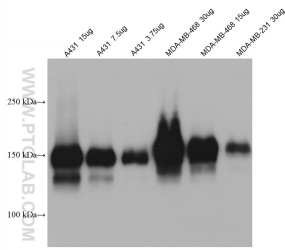
For technical support and original validation data for this product please contact:

T: 1 (888) 4PTGLAB (1-888-478-4522) (toll free in USA), or 1(312) 455-8498 (outside USA)

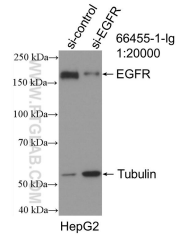
E: [proteintech@ptglab.com](mailto:proteintech@ptglab.com)  
 W: [ptglab.com](http://ptglab.com)

**This product is exclusively available under Proteintech Group brand and is not available to purchase from any other manufacturer.**

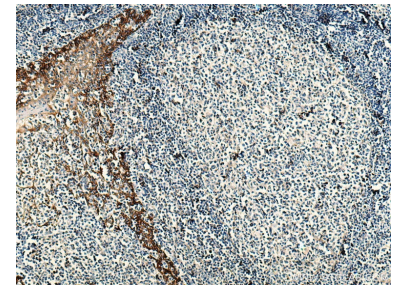
## Ausgewählte Validierungsdaten



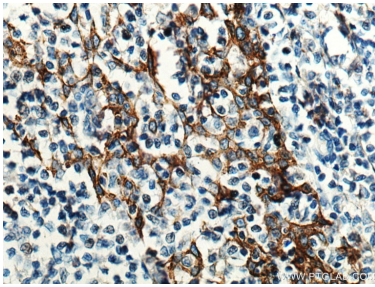
Various lysates were subjected to SDS PAGE followed by western blot with 66455-1-Ig (EGFR antibody) at dilution of 1:20000 incubated at room temperature for 1.5 hours.



WB result of EGFR antibody (66455-1-Ig; 1:20000; incubated at room temperature for 1.5 hours) with sh-Control and sh-EGFR transfected HepG2 cells.



Immunohistochemical analysis of paraffin-embedded human tonsillitis tissue slide using 66455-1-Ig (EGFR antibody) at dilution of 1:2000 (under 10x lens). Heat mediated antigen retrieval with Tris-EDTA buffer (pH 9.0).



Immunohistochemical analysis of paraffin-embedded human tonsillitis tissue slide using 66455-1-Ig (EGFR antibody) at dilution of 1:2000 (under 40x lens). Heat mediated antigen retrieval with Tris-EDTA buffer (pH 9.0).