

Allgemeine Informationen

| | | |
|---|---|--|
| Katalog-Nr.: 66458-1-Ig | GenBank-Zugangsnummer: BC009309 | Reinigungsmethode: Protein-G-Reinigung |
| Größe: 150ul , Konzentration: 1200 µg/ml von23710 Nanodrop und 1000 µg/ml durch die Bradford-Methode mit BSA als Standard; | GeneID (NCBI): Vollständiger Name: GABA(A) receptor-associated protein like 1 | CloneNo.: 1E10F6 Empfohlene Verdünnungen: WB 1:1000-1:4000 IF 1:300-1:1200 |
| Wirt: Maus | Berechnete Masse: 14 kDa | |
| Isotyp: IgG1 | Beobachtete Masse: 16-18 kDa | |
| Immunogen Katalognummer: AG1473 | | |

Anwendungen

| | |
|--|---|
| Geprüfte Anwendungen: IF, WB, ELISA | Positivkontrollen: WB : Maushirngewebe, Hausschwein-Hirngewebe, Rattenhirngewebe IF : HepG2-Zellen, |
| Getestete Reaktivität: Hausschwein, Human, Maus, Ratte | |

Hintergrundinformationen

GABARAPL1 (GABARAP-like protein 1), also named as ATG8, GEC1, APG8L, ATG8L and APG8-LIKE, is a member of GABARP (GABAA receptor-associated protein) family. GABARAPL1 was initially identified as estrogen-regulated gene and the protein acts in receptor and vesicle transport. It's also involved in the process of autophagy like GABARAP and GABARAPL2, and may be considered as an autophagic marker. It is expressed at very high levels in the brain, heart, peripheral blood leukocytes, liver, kidney, placenta and skeletal muscle and at very low levels in thymus and small intestine.

Lagerung

Lagerungsbedingungen:
Bei -20°C lagern. Nach dem Versand ein Jahr lang stabil
Lagerungspuffer:
PBS mit 0.02% Natriumazid und 50% Glycerin pH 7.3.
Aliquotieren ist nicht notwendig bei -20°C Lagerung

*** 20ul-Größen enthalten 0.1% BSA

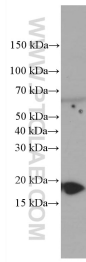
For technical support and original validation data for this product please contact:

T: 1 (888) 4PTGLAB (1-888-478-4522) (toll free
in USA), or 1(312) 455-8498 (outside USA)

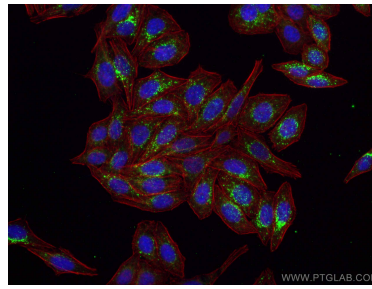
E: proteintech@ptglab.com
W: ptglab.com

This product is exclusively available under Proteintech Group brand and is not available to purchase from any other manufacturer.

Ausgewählte Validierungsdaten



mouse brain tissue were subjected to SDS PAGE followed by western blot with 66458-1-Ig (GABARAPL1 antibody) at dilution of 1:2000 incubated at room temperature for 1.5 hours.



Immunofluorescent analysis of (-20°C Ethanol) fixed HepG2 cells using GABARAPL1 antibody (66458-1-Ig, Clone: 1E10F6) at dilution of 1:600 and CoraLite®488-Conjugated AffiniPure Goat Anti-Mouse IgG(H+L), CL594-Phalloidin (red).