

Nur für Forschungszwecke

SLP76 Monoklonaler Antikörper

Katalog-Nr.:66465-1-Ig



Allgemeine Informationen

Katalog-Nr.: 66465-1-Ig	GenBank-Zugangsnummer: BC016618	Reinigungsmethode: Protein-A-Reinigung
Größe: 150ul , Konzentration: 1600 µg/ml von3937 Nanodrop und 1000 µg/ml durch die Bradford-Methode mit BSA als Standard;	GeneID (NCBI): 3937	CloneNo.: 4H10B1
Wirt: Maus	Vollständiger Name: lymphocyte cytosolic protein 2 (SH2 domain containing leukocyte protein of 76kDa)	Empfohlene Verdünnungen: WB 1:5000-1:50000 IF 1:50-1:500
Isotyp: IgG1	Berechnete Masse: 533 aa, 60 kDa	
Immunogen Katalognummer: AG3432	Beobachtete Masse: 76 kDa	

Anwendungen

Geprüfte Anwendungen: FC (Intra), IF, WB, ELISA	Positivkontrollen:
Getestete Reaktivität: Human	WB : Jurkat-Zellen, K-562-Zellen, MOLT-4-Zellen IF : HeLa-Zellen,

Hintergrundinformationen

LCP2, also named as SLP76, is an adapter protein that acts as a substrate of the T cell antigen receptor (TCR)-activated protein tyrosine kinase pathway. It contains an N-terminal leucine Zip motif, a tyrosine-rich domain, a proline-rich domain and a C-terminal SH2 domain. It is constitutively associated with the growth factor receptor-bound protein 2 (Grb2)-related adapter protein 2 (Grap2, a.k.a. GADS) through the interaction of its proline residues with one of the SH3 domains of Grap2. SLP76 associates with growth factor receptor bound protein 2 (Grap2), and is thought to play a role TCR-mediated intracellular signal transduction. SLP76 is also expressed by mast cells, and mast cell activation was markedly impaired in SLP76-deficient mice.

Lagerung

Lagerungsbedingungen:
Bei -20°C lagern. Nach dem Versand ein Jahr lang stabil
Lagerungspuffer:
PBS mit 0.02% Natriumazid und 50% Glycerin pH 7.3.
Aliquotieren ist nicht notwendig bei -20°C Lagerung

***** 20ul-Größen enthalten 0.1% BSA**

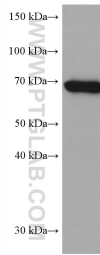
For technical support and original validation data for this product please contact:

T: 1 (888) 4PTGLAB (1-888-478-4522) (toll free
in USA), or 1(312) 455-8498 (outside USA)

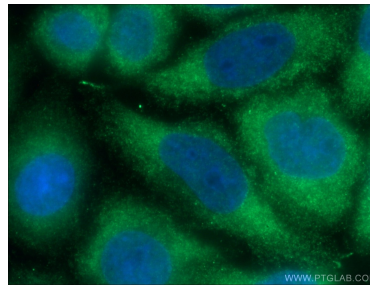
E: proteintech@ptglab.com
W: ptglab.com

This product is exclusively available under Proteintech Group brand and is not available to purchase from any other manufacturer.

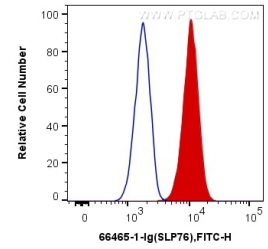
Ausgewählte Validierungsdaten



Jurkat cells were subjected to SDS PAGE followed by western blot with 66465-1-Ig (SLP76 antibody) at dilution of 1:10000 incubated at room temperature for 1.5 hours.



Immunofluorescent analysis of (-20°C Ethanol) fixed HeLa cells using 66465-1-Ig (SLP76 antibody) at dilution of 1:100 and Alexa Fluor 488-conjugated AffiniPure Goat Anti-Mouse IgG(H+L).



1X10⁶ Jurkat cells were intracellularly stained with 0.4 ug Anti-Human SLP76 (66465-1-Ig, Clone:4H10B1) and Coralite@488-Conjugated AffiniPure Goat Anti-Mouse IgG(H+L) at dilution 1:1000 (red), or 0.4 ug Control Antibody. Cells were fixed with 4% PFA and permeabilized with Flow Cytometry Perm Buffer (PF00011-C).