

Nur für Forschungszwecke

# Caspase 3(human specific) Monoklonaler Antikörper



Katalog-Nr.:66470-1-Ig **64 Publikationen**

## Allgemeine Informationen

<b>Katalog-Nr.:</b> 66470-1-Ig	<b>GenBank-Zugangsnummer:</b> BC016926	<b>Reinigungsmethode:</b> Protein-G-Reinigung
<b>Größe:</b> 150ul , Konzentration: 1000 µg/ml durch die Bradford-Methode mit BSA als Standard;	<b>GeneID (NCBI):</b> 836	<b>CloneNo.:</b> 1E7F9
<b>Wirt:</b> Maus	<b>Vollständiger Name:</b> caspase 3, apoptosis-related cysteine peptidase	<b>Empfohlene Verdünnungen:</b> WB 1:500-1:2000 IHC 1:100-1:400 IF 1:50-1:500
<b>Isotyp:</b> IgG2b	<b>Berechnete Masse:</b> 277 aa, 32 kDa	
<b>Immunogen Katalognummer:</b> AG25029	<b>Beobachtete Masse:</b> 32-35 kDa, 19 kDa, 17 kDa	

## Anwendungen

<b>Geprüfte Anwendungen:</b> IF, IHC, WB,ELISA	<b>Positivkontrollen:</b> WB : Jurkat-Zellen, HEK-293-Zellen
<b>In Publikationen genannte Anwendungen:</b> IF, IHC, WB	<b>IHC :</b> humanes Mammakarzinomgewebe,
<b>Getestete Reaktivität:</b> Human	<b>IF :</b> HeLa-Zellen,
<b>Zitierte Arten:</b> Human, Maus, Ratte, Zebrafisch, Kuh	
<b>Hinweis-IHC: Antigendemaskierung mit TE-Puffer pH 9,0 empfohlen. (*) Wahlweise kann die Antigendemaskierung auch mit Citratpuffer pH 6,0 erfolgen.</b>	

## Hintergrundinformationen

Casp3 (caspase 3), also named as CPP32, SCA-1 and Apopain, belongs to the peptidase C14A family. Caspase 3 is involved in the activation cascade of caspases responsible for apoptosis execution. At the onset of apoptosis it proteolytically cleaves poly(ADP-ribose) polymerase (PARP) at a '216-Asp-Gly-217' bond. Caspase 3 cleaves and activates sterol regulatory element binding proteins (SREBPs) between the basic helix-loop-helix leucine zipper domain and the membrane attachment domain. Cleaves and activates caspase-6, -7 and -9. CASP3 is involved in the cleavage of huntingtin. This antibody is specific for human caspase 3, it can recognize the 32 kDa pro-caspase 3 as well as 17 and 19 kDa cleaved-caspase 3.

## Bemerkenswerte Veröffentlichungen

Verfasser	Pubmed ID	Journal	Anwendung
Junxia Hu	31580970	Biomed Pharmacother	WB
Genquan Yue	31702026	Mol Med Rep	WB
Ruizhi Yao	30231545	Int J Mol Sci	WB

## Lagerung

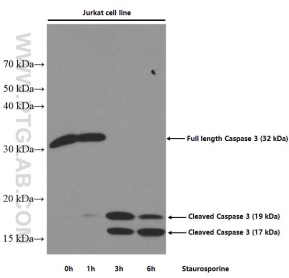
**Lagerungsbedingungen:**  
Bei -20°C lagern. Nach dem Versand ein Jahr lang stabil  
**Lagerungspuffer:**  
PBS mit 0.02% Natriumazid und 50% Glycerin pH 7.3.  
Aliquotieren ist nicht notwendig bei -20°C Lagerung

**\*\*\* 20ul-Größen enthalten 0.1% BSA**

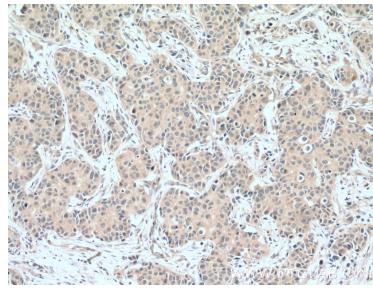
For technical support and original validation data for this product please contact:  
T: 1 (888) 4PTGLAB (1-888-478-4522) (toll free in USA), or 1(312) 455-8498 (outside USA)  
E: proteintech@ptglab.com  
W: ptglab.com

**This product is exclusively available under Proteintech Group brand and is not available to purchase from any other manufacturer.**

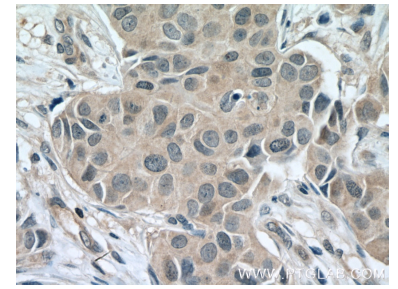
## Ausgewählte Validierungsdaten



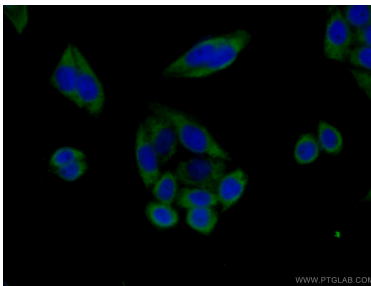
Untreated and Staurosporine treated Jurkat cells were subjected to SDS PAGE followed by western blot with 66470-1-Ig (CASP3(human specific) antibody) at dilution of 1:2000 incubated at room temperature for 1.5 hours.



Immunohistochemical analysis of paraffin-embedded human breast cancer tissue slide using 66470-1-Ig (CASP3(human specific) antibody) at dilution of 1:200 (under 10x lens. Heat mediated antigen retrieval with Tris-EDTA buffer (pH 9.0).



Immunohistochemical analysis of paraffin-embedded human breast cancer tissue slide using 66470-1-Ig (CASP3(human specific) antibody) at dilution of 1:200 (under 40x lens. Heat mediated antigen retrieval with Tris-EDTA buffer (pH 9.0).



Immunofluorescent analysis of (-20°C Ethanol) fixed HeLa cells using 66470-1-Ig (Caspase 3(human specific) antibody) at dilution of 1:100 and CoraLite488-Conjugated AffiniPure Goat Anti-Mouse IgG(H+L).