

Allgemeine Informationen

Katalog-Nr.:

66474-1-Ig

Größe:

150ul , Konzentration: 1500 µg/ml von6648

Nanodrop und 1000 µg/ml durch die Bradford-Methode mit BSA als Standard;

Wirt:

Maus

Isotyp:

IgG2a

Immunogen Katalognummer:

AG21388

GenBank-Zugangsnummer:

BC016934

GeneID (NCBI):

6648

Vollständiger Name:

superoxide dismutase 2, mitochondrial

Berechnete Masse:

25 kDa

Beobachtete Masse:

25 kDa

Reinigungsmethode:

Protein-A-Reinigung

CloneNo.:

3A6C2

Empfohlene Verdünnungen:

WB 1:10000-1:40000

IHC 1:2500-1:10000

IF 1:200-1:800

Anwendungen

Geprüfte Anwendungen:

IF, IHC, WB, ELISA

In Publikationen genannte Anwendungen:

CoIP, IF, IHC, WB

Getestete Reaktivität:

Hausschwein, Human, Maus, Ratte

Zitierte Arten:

Hausschwein, Human, Maus, Ratte

Hinweis-IHC: Antigendemaskierung mit TE-Puffer pH 9,0 empfohlen. (*) Wahlweise kann die Antigendemaskierung auch mit Citratpuffer pH 6,0 erfolgen.

Positivkontrollen:

WB : ROS1728-Zellen, Hausschwein-Hirngewebe, HeLa-Zellen, Maushirngewebe, Rattenhirngewebe, RAW 264.7-Zellen

IHC : humanes Leberkarzinomgewebe, humanes Kolonkarzinomgewebe, humanes Lebergewebe, humanes Pankreaskarzinomgewebe, Mauslebergewebe, Rattenlebergewebe

IF : HUVEC-Zellen,

Hintergrundinformationen

SOD2(superoxide dismutase 2, mitochondrial) is also named as IPOB, MNSOD, SODM, Mn-SOD and belongs to the iron/manganese superoxide dismutase family. It is a marker of mitochondria, which is restricted to the perinuclear area in a cell with aggregate formation of mutant SOD1(PMID:12659845). It functions as the first line of antioxidant defense against highly reactive superoxide radicals and it appears to be early predictors for survival in septic patients with MIF(PMID:20863520). It has 2 isoforms with the molecular weight of 25 kDa and 21 kDa.

Bemerkenswerte Veröffentlichungen

Verfasser	Pubmed ID	Journal	Anwendung
Lupeng Chen	34603279	Front Immunol	WB
Ling Li	34532973	J Cell Mol Med	WB
Fan Yu	31669212	J Control Release	WB,IF

Lagerung

Lagerungsbedingungen:

Bei -20°C lagern. Nach dem Versand ein Jahr lang stabil

Lagerungspuffer:

PBS mit 0.02% Natriumazid und 50% Glycerin pH 7.3.

Aliquotieren ist nicht notwendig bei -20°C Lagerung

***** 20ul-Größen enthalten 0.1% BSA**

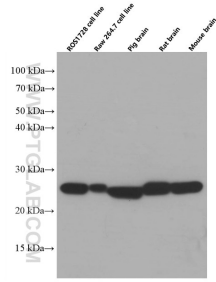
For technical support and original validation data for this product please contact:

T: 1 (888) 4PTGLAB (1-888-478-4522) (toll free in USA), or 1(312) 455-8498 (outside USA)

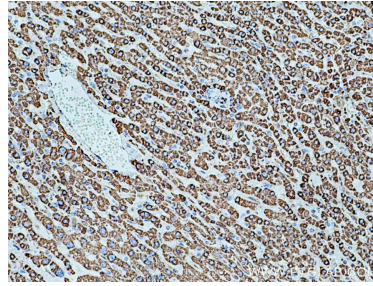
E: proteintech@ptglab.com
 W: ptglab.com

This product is exclusively available under Proteintech Group brand and is not available to purchase from any other manufacturer.

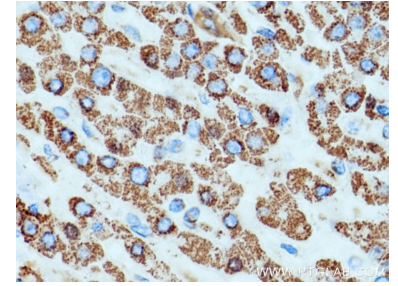
Ausgewählte Validierungsdaten



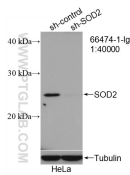
Various lysates were subjected to SDS PAGE followed by western blot with 66474-1-Ig (SOD2 antibody) at dilution of 1:20000 incubated at room temperature for 1.5 hours.



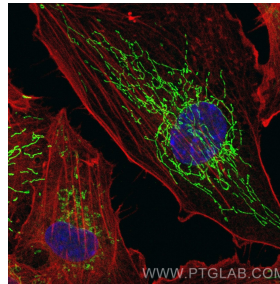
Immunohistochemical analysis of paraffin-embedded human liver cancer tissue slide using 66474-1-Ig (SOD2 antibody) at dilution of 1:5000 (under 10x lens). Heat mediated antigen retrieval with Tris-EDTA buffer (pH 9.0).



Immunohistochemical analysis of paraffin-embedded human liver cancer tissue slide using 66474-1-Ig (SOD2 antibody) at dilution of 1:5000 (under 40x lens). Heat mediated antigen retrieval with Tris-EDTA buffer (pH 9.0).



WB result of SOD2 antibody (66474-1-Ig; 1:40000; incubated at room temperature for 1.5 hours) with sh-Control and sh-SOD2 transfected HeLa cells.



Immunofluorescent analysis of (-20°C Methanol) fixed HUVEC cells using SOD2 antibody (66474-1-Ig, Clone: 3A6C2) at dilution of 1:400 and CoralLite® 488-Conjugated AffiniPure Goat Anti-Mouse IgG(H+L).