

Allgemeine Informationen

Katalog-Nr.: 66479-1-Ig	GenBank-Zugangsnummer: BC005395	Reinigungsmethode: Protein-G-Reinigung
Größe: 150ul, Konzentration: 1700 µg/ml von 3263 Nanodrop und 1000 µg/ml durch die Bradford-Methode mit BSA als Standard;	GeneID (NCBI): Vollständiger Name: hemopexin	CloneNo.: 3A9D6
Wirt: Maus	Berechnete Masse: 254 aa, 29 kDa	Empfohlene Verdünnungen: WB 1:5000-1:40000 IHC 1:250-1:1000 IF 1:200-1:800
Isotyp: IgG1	Beobachtete Masse: 65-75 kDa	
Immunogen Katalognummer: AG8533		

Anwendungen

Geprüfte Anwendungen: FC, IF, IHC, WB, ELISA	Positivkontrollen:
In Publikationen genannte Anwendungen: IF	WB: humanes Plasmagewebe, Hausschwein- Plasmagewebe, humanes Plazenta-Gewebe, Rattenserumgewebe
Getestete Reaktivität: Hausschwein, Human, Ratte	IHC: humanes Lebergewebe, humanes Plazenta- Gewebe
Zitierte Arten: Human	IF: humanes Leberkarzinomgewebe,
Hinweis-IHC: Antigendemaskierung mit TE- Puffer pH 9,0 empfohlen. (*) Wahlweise kann die Antigendemaskierung auch mit Citratpuffer pH 6,0 erfolgen.	

Hintergrundinformationen

Hemopexin (HPX) is the plasma protein responsible for scavenging heme, thus preventing heme-mediated oxidative stress and heme-bound iron loss. In addition, hemopexin blocks heme activation of immune receptors and vascular inflammatory processes. It is mainly expressed in liver, the synthesis of which is induced after inflammation. Alterations of plasma hemopexin level have been linked to disorders like atherosclerosis and inflammatory diseases.

Bemerkenswerte Veröffentlichungen

Verfasser	Pubmed ID	Journal	Anwendung
Emna Ouni	35341935	Matrix Biol	IF

Lagerung

Lagerungsbedingungen:
Bei -20°C lagern. Nach dem Versand ein Jahr lang stabil

Lagerungspuffer:
PBS mit 0.02% Natriumazid und 50% Glycerin pH 7.3.

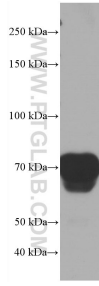
Aliquotieren ist nicht notwendig bei -20°C Lagerung

***** 20ul-Größen enthalten 0.1% BSA**

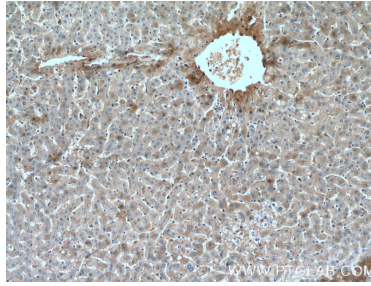
For technical support and original validation data for this product please contact:
 T: 1 (888) 4PTGLAB (1-888-478-4522) (toll free in USA), or 1(312) 455-8498 (outside USA)
 E: proteintech@ptglab.com
 W: ptglab.com

This product is exclusively available under Proteintech Group brand and is not available to purchase from any other manufacturer.

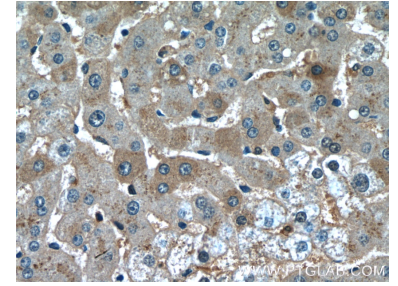
Ausgewählte Validierungsdaten



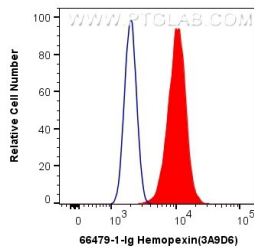
0.7 μ L human plasma was subjected to SDS PAGE followed by western blot with 66479-1-Ig (Hemopexin antibody) at dilution of 1:20000 incubated at room temperature for 1.5 hours.



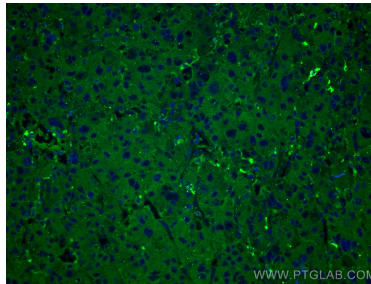
Immunohistochemical analysis of paraffin-embedded human liver tissue slide using 66479-1-Ig (Hemopexin antibody) at dilution of 1:500 (under 10x lens).



Immunohistochemical analysis of paraffin-embedded human liver tissue slide using 66479-1-Ig (Hemopexin antibody) at dilution of 1:500 (under 40x lens).



1X10⁶ HepG2 cells were intracellularly stained with 0.5 μ g Anti-Human Hemopexin (66479-1-Ig, Clone:3A9D6) and CoraLite[®]488-Conjugated AffiniPure Goat Anti-Mouse IgG(H+L) at dilution 1:1000 (red), or 0.5 μ g Control Antibody. Cells were fixed with 4% PFA and permeabilized with Flow Cytometry Perm Buffer (PF00011-C).



Immunofluorescent analysis of (4% PFA) fixed human liver cancer tissue using Hemopexin antibody (66479-1-Ig, Clone: 3A9D6) at dilution of 1:400 and CoraLite[®]488-Conjugated AffiniPure Goat Anti-Mouse IgG(H+L).