

Nur für Forschungszwecke

# Cytokeratin 7 Monoklonaler Antikörper



Katalog-Nr.: 66483-1-Ig

Vorgestelltes Produkt

7 Publikationen

## Allgemeine Informationen

<b>Katalog-Nr.:</b> 66483-1-Ig	<b>GenBank-Zugangsnummer:</b> BC002700	<b>Reinigungsmethode:</b> Protein-A-Reinigung
<b>Größe:</b> 150ul, Konzentration: 2100 µg/ml von 3855 Nanodrop und 1000 µg/ml durch die Bradford-Methode mit BSA als Standard;	<b>GeneID (NCBI):</b> keratin 7	<b>CloneNo.:</b> 2E1G5
<b>Wirt:</b> Maus	<b>Vollständiger Name:</b> keratin 7	<b>Empfohlene Verdünnungen:</b> WB 1:10000-1:40000 IHC 1:500-1:2000 IF 1:200-1:800
<b>Isotyp:</b> IgG2a	<b>Berechnete Masse:</b> 469 aa, 51 kDa	
<b>Immunogen Katalognummer:</b> AG7895	<b>Beobachtete Masse:</b> 51 kDa	

## Anwendungen

### Geprüfte Anwendungen:

IF, IHC, WB, ELISA

### In Publikationen genannte Anwendungen:

IF, IHC

### Getestete Reaktivität:

Human

### Zitierte Arten:

Human, Maus

**Hinweis-IHC: Antigenmaskierung mit TE-Puffer pH 9,0 empfohlen. (\*) Wahlweise kann die Antigenmaskierung auch mit Citratpuffer pH 6,0 erfolgen.**

### Positivkontrollen:

**WB:** A549-Zellen, A431-Zellen, BxPC-3-Zellen, HeLa-Zellen, HepG2-Zellen, PC-3-Zellen, T-47D-Zellen

**IHC:** humanes Lungenkarzinomgewebe, humanes Mammakarzinomgewebe, humanes Nierengewebe, humanes Ovarialkarzinomgewebe, humanes Pankreasgewebe

**IF:** humanes Prostatakarzinomgewebe,

## Hintergrundinformationen

Keratins are a large family of proteins that form the intermediate filament cytoskeleton of epithelial cells, which are classified into two major sequence types. Type I keratins are a group of acidic intermediate filament proteins, including K9-K23, and the hair keratins Ha1-Ha8. Type II keratins are the basic or neutral counterparts to the acidic type I keratins, including K1-K8, and the hair keratins, Hb1-Hb6. KRT7, also named as cytokeratin 7, is one member of type II basic cytokeratin. It is specifically expressed in the simple epithelia lining the cavities of the internal organs and in the gland ducts and blood vessels, and their neoplasms. KRT7 is marker of epithelial tissues, but not present in carcinomas of stratified squamous cell origin. This antibody is specifically against KRT7.

## Bemerkenswerte Veröffentlichungen

Verfasser	Pubmed ID	Journal	Anwendung
Yan Fang	35643225	Gene	IF
Xin Chen	35602106	Oxid Med Cell Longev	IHC, IF
Yanling Gou	30838396	Hum Reprod	IF

## Lagerung

### Lagerungsbedingungen:

Bei -20°C lagern. Nach dem Versand ein Jahr lang stabil

### Lagerungspuffer:

PBS mit 0.02% Natriumazid und 50% Glycerin pH 7.3.

Aliquotieren ist nicht notwendig bei -20°C Lagerung

\*\*\* 20ul-Größen enthalten 0.1% BSA

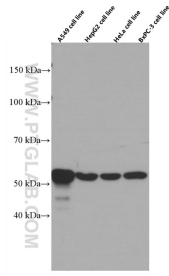
For technical support and original validation data for this product please contact:

T: 1 (888) 4PTGLAB (1-888-478-4522) (toll free in USA), or 1(312) 455-8498 (outside USA)

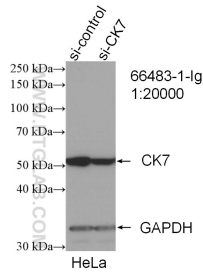
E: proteintech@ptglab.com  
W: ptglab.com

**This product is exclusively available under Proteintech Group brand and is not available to purchase from any other manufacturer.**

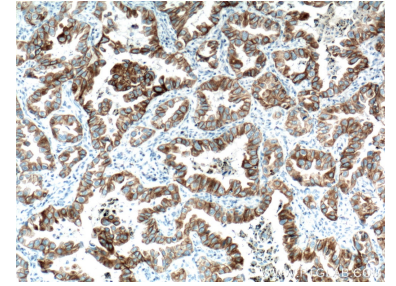
## Ausgewählte Validierungsdaten



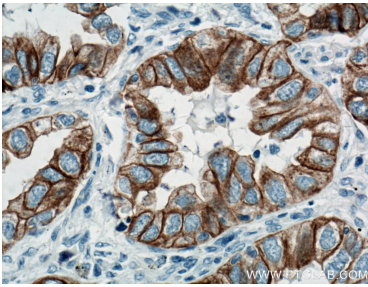
Various lysates were subjected to SDS PAGE followed by western blot with 66483-1-Ig (CK7 antibody) at dilution of 1:20000 incubated at room temperature for 1.5 hours.



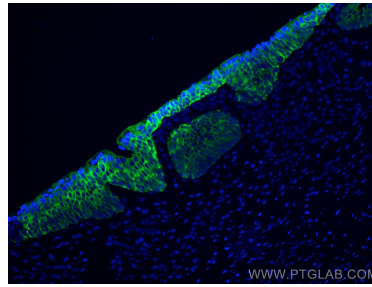
WB result of CK7 antibody (66483-1-Ig; 1:20000; incubated at room temperature for 1.5 hours) with sh-Control and sh-CK7 transfected HeLa cells.



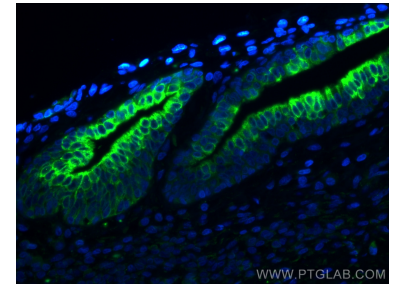
Immunohistochemical analysis of paraffin-embedded human lung cancer tissue slide using 66483-1-Ig (CK7 antibody) at dilution of 1:1000 (under 10x lens). Heat mediated antigen retrieval with Tris-EDTA buffer (pH 9.0).



Immunohistochemical analysis of paraffin-embedded human lung cancer tissue slide using 66483-1-Ig (CK7 antibody) at dilution of 1:1000 (under 40x lens). Heat mediated antigen retrieval with Tris-EDTA buffer (pH 9.0).



Immunofluorescent analysis of (4% PFA) fixed human prostate cancer tissue using Cytokeratin 7 antibody (66483-1-Ig, Clone: 2E1G5 ) at dilution of 1:400 and CoraLite®488-Conjugated AffiniPure Goat Anti-Mouse IgG(H+L).



Immunofluorescent analysis of (4% PFA) fixed human prostate cancer tissue using Cytokeratin 7 antibody (66483-1-Ig, Clone: 2E1G5 ) at dilution of 1:400 and CoraLite®488-Conjugated AffiniPure Goat Anti-Mouse IgG(H+L).