

Nur für Forschungszwecke

human IgM Monoklonaler Antikörper



Katalog-Nr.:66484-1-Ig **2 Publikationen**

Allgemeine Informationen

Katalog-Nr.: 66484-1-Ig	GenBank-Zugangsnummer: BC009851	Reinigungsmethode: Protein-G-Reinigung
Größe: 150ul , Konzentration: 1500 µg/ml von3507 Nanodrop;	GeneID (NCBI): 2D10B10	CloneNo.: 2D10B10
Wirt: Maus	Vollständiger Name: immunoglobulin heavy constant mu	Empfohlene Verdünnungen: WB 1:5000-1:20000 IHC 1:2000-1:6000 IF 1:200-1:800
Isotyp: IgG1	Berechnete Masse: 69 kDa	
Immunogen Katalognummer: AG1459	Beobachtete Masse: 75 kDa	

Anwendungen

Geprüfte Anwendungen: IF, IHC, WB, ELISA	Positivkontrollen: WB : humanes Plasmagewebe, IHC : humanes Tonsillitisgewebe, humanes Lymphomgewebe IF : humanes Tonsillitisgewebe, humanes Appendizitis-Gewebe
In Publikationen genannte Anwendungen: IF, WB	
Getestete Reaktivität: Human	
Zitierte Arten: Human	

Hinweis-IHC: Antigendemaskierung mit TE-Puffer pH 9,0 empfohlen. (*) Wahlweise kann die Antigendemaskierung auch mit Citratpuffer pH 6,0 erfolgen.

Hintergrundinformationen

IGHM is the constant region of heavy chain of IgM. IgM is the first immunoglobulin expressed during B cell development. IgM antibodies play an important role in primary immune response involved in early recognition of external invaders like bacteria and viruses, cellular waste and modified self, as well as in recognition and elimination of precancerous and cancerous lesions. The μ heavy chain disease is a rare lymphoproliferative disorder. Human immunoglobulin heavy chain locus translocations are associated with leukaemias and lymphomas, including multiple myeloma, mantle cell lymphoma, Burkitt's lymphoma and diffuse large B cell lymphoma. This antibody detects the heavy chain of human IgM (~75 kDa).

Bemerkenswerte Veröffentlichungen

Verfasser	Pubmed ID	Journal	Anwendung
Han Liu	36106364	Adv Sci (Weinh)	IF
Anne Kathrin Wessig	35296708	Sci Rep	WB

Lagerung

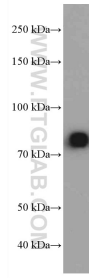
Lagerungsbedingungen:
Bei -20°C lagern. Nach dem Versand ein Jahr lang stabil
Lagerungspuffer:
PBS mit 0.02% Natriumazid und 50% Glycerin pH 7.3.
Aliquotieren ist nicht notwendig bei -20°C Lagerung

***** 20ul-Größen enthalten 0.1% BSA**

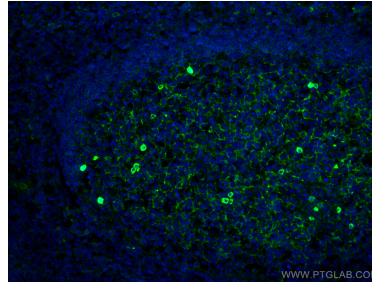
For technical support and original validation data for this product please contact:
T: 1 (888) 4PTGLAB (1-888-478-4522) (toll free in USA), or 1(312) 455-8498 (outside USA)
E: proteintech@ptglab.com
W: ptglab.com

This product is exclusively available under Proteintech Group brand and is not available to purchase from any other manufacturer.

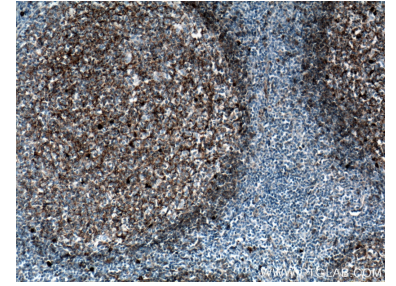
Ausgewählte Validierungsdaten



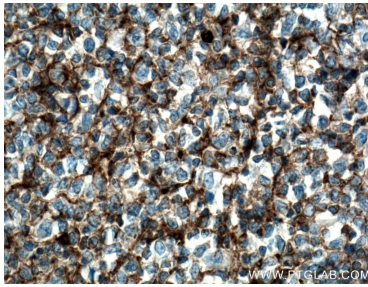
0.1 µL human plasma was subjected to SDS PAGE followed by western blot with 66484-1-Ig (IGHM antibody) at dilution of 1:10000 incubated at room temperature for 1.5 hours.



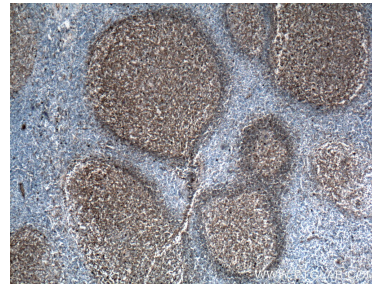
Immunofluorescent analysis of (4% PFA) fixed human tonsillitis tissue using human IgM antibody (66484-1-Ig, Clone: 2D10B10) at dilution of 1:400 and CoraLite®488-Conjugated AffiniPure Goat Anti-Mouse IgG(H+L).



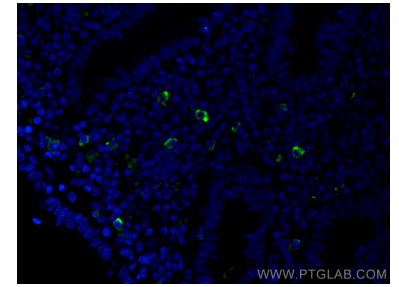
Immunohistochemical analysis of paraffin-embedded human tonsillitis tissue slide using 66484-1-Ig (IGHM antibody) at dilution of 1:1000 (under 10x lens. Heat mediated antigen retrieval with Tris-EDTA buffer (pH 9.0).



Immunohistochemical analysis of paraffin-embedded human tonsillitis tissue slide using 66484-1-Ig (IGHM antibody) at dilution of 1:1000 (under 40x lens. Heat mediated antigen retrieval with Tris-EDTA buffer (pH 9.0).



Immunohistochemical analysis of paraffin-embedded human tonsillitis tissue slide using 66484-1-Ig (IGHM antibody) at dilution of 1:1000 (under 4x lens. Heat mediated antigen retrieval with Tris-EDTA buffer (pH 9.0).



Immunofluorescent analysis of (4% PFA) fixed human appendicitis tissue using human IgM antibody (66484-1-Ig, Clone: 2D10B10) at dilution of 1:400 and CoraLite®488-Conjugated AffiniPure Goat Anti-Mouse IgG(H+L).