

Nur für Forschungszwecke

NR2E3 Monoklonaler Antikörper

Katalog-Nr.:66494-1-Ig



Allgemeine Informationen

Katalog-Nr.: 66494-1-Ig	GenBank-Zugangsnummer: BC041421	Reinigungsmethode: Protein-G-Reinigung
Größe: 150ul , Konzentration: 1600 µg/ml von10002 Nanodrop und 1000 µg/ml durch die Bradford-Methode mit BSA als Standard;	GeneID (NCBI): 15002	CloneNo.: 1G1D9
Wirt: Maus	Vollständiger Name: nuclear receptor subfamily 2, group E, member 3	Empfohlene Verdünnungen: 1:500-1:2000
Isotyp: IgG1	Berechnete Masse: 45 kDa	
Immunogen Katalognummer: AG5831	Beobachtete Masse: 45-50 kDa	

Anwendungen

Geprüfte Anwendungen: WB,ELISA	Positivkontrollen: WB : Hausschwein-Retina-Gewebe, Maus-Retina- Gewebe
Getestete Reaktivität: Hausschwein, Maus	

Hintergrundinformationen

NR2E3, also known as PNR, encodes a retinal nuclear receptor that is a ligand-dependent transcription factor. This protein is part of a large family of nuclear receptor transcription factors involved in signaling pathways. NR2E3 influences the development of photoreceptors and their differentiation into rod and cone types, and acts as a transcriptional factor that is an activator of rod development and repressor of cone development [PMID:20725840]. It binds the promoter region of a number of rod- and cone-specific genes, including rhodopsin, M- and S-opsin and rod-specific phosphodiesterase beta subunit. [PMID:15689355]

Lagerung

Lagerungsbedingungen:
Bei -20°C lagern. Nach dem Versand ein Jahr lang stabil
Lagerungspuffer:
PBS mit 0.02% Natriumazid und 50% Glycerin pH 7.3.
Aliquotieren ist nicht notwendig bei -20°C Lagerung

***** 20ul-Größen enthalten 0.1% BSA**

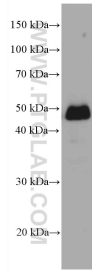
For technical support and original validation data for this product please contact:

T: 1 (888) 4PTGLAB (1-888-478-4522) (toll free
in USA), or 1(312) 455-8498 (outside USA)

E: proteintech@ptglab.com
W: ptglab.com

This product is exclusively available under Proteintech Group brand and is not available to purchase from any other manufacturer.

Ausgewählte Validierungsdaten



pig retina tissue were subjected to SDS PAGE followed by western blot with 66494-1-Ig (NR2E3 antibody) at dilution of 1:1000 incubated at room temperature for 1.5 hours.