

Nur für Forschungszwecke

TRAF6 Monoklonaler Antikörper

Katalog-Nr.:66498-1-Ig

Vorgestelltes Produkt

54 Publikationen



Allgemeine Informationen

Katalog-Nr.:
66498-1-Ig

Größe:
150ul, Konzentration: 700 µg/ml
durch die Bradford-Methode mit BSA
als Standard;

Wirt:
Maus

Isotyp:
IgG1

Immunogen Katalognummer:
AG24696

GenBank-Zugangsnummer:
BC031052

GeneID (NCBI):
7189

Vollständiger Name:
TNF receptor-associated factor 6

Berechnete Masse:
522 aa, 60 kDa

Beobachtete Masse:
60 kDa

Reinigungsmethode:
Protein-A-Reinigung

CloneNo.:
1D1E1

Empfohlene Verdünnungen:
WB 1:5000-1:20000
IF 1:200-1:800

Anwendungen

Geprüfte Anwendungen:
FC, IF, WB, ELISA

In Publikationen genannte Anwendungen:
IF, IHC, IP, WB

Getestete Reaktivität:
Human

Zitierte Arten:
Fisch, Hausschwein, Human

Positivkontrollen:

WB : A431-Zellen, HEK-293-Zellen, HeLa-Zellen,
HepG2-Zellen, Jurkat-Zellen, K-562-Zellen, U2OS-
Zellen

IF : HeLa-Zellen,

Hintergrundinformationen

TRAF6 is a member of the TNF receptor associated factor (TRAF) protein family. TRAF6 is recognized as a signal transducer, which activates the NF-κB pathway in response to pro-inflammatory cytokines. TRAF6 has E3 ligase activity and is responsible for inducing Lys-63 (K63)-linked poly-ubiquitination chains, functioning together with E2 Ubc13/Uev1A complex to mediate IKK activation. TRAF6 plays a crucial role in the regulation of the innate and adaptive immune responses.

Bemerkenswerte Veröffentlichungen

Verfasser	Pubmed ID	Journal	Anwendung
Sujie Dong	36215773	Vet Microbiol	WB
Jiajun Liu	34524943	Autophagy	WB,IF
Zening Qiao	36185691	Front Nutr	WB

Lagerung

Lagerungsbedingungen:

Bei -20°C lagern. Nach dem Versand ein Jahr lang stabil

Lagerungspuffer:

PBS mit 0.02% Natriumazid und 50% Glycerin pH 7.3.

Aliquotieren ist nicht notwendig bei -20°C Lagerung

*** 20ul-Größen enthalten 0.1% BSA

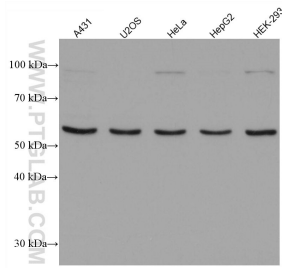
For technical support and original validation data for this product please contact:

T: 1 (888) 4PTGLAB (1-888-478-4522) (toll free
in USA), or 1(312) 455-8498 (outside USA)

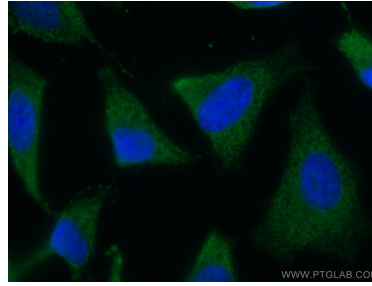
E: proteintech@ptglab.com
W: ptglab.com

This product is exclusively available under Proteintech Group brand and is not available to purchase from any other manufacturer.

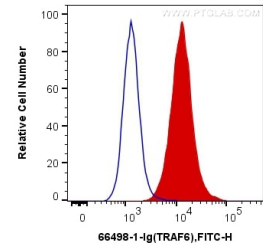
Ausgewählte Validierungsdaten



Various lysates were subjected to SDS PAGE followed by western blot with 66498-1-Ig (TRAF6 antibody) at dilution of 1:20000 incubated at room temperature for 1.5 hours.



Immunofluorescent analysis of (-20°C Ethanol) fixed HeLa cells using TRAF6 antibody (66498-1-Ig, Clone: 1D1E1) at dilution of 1:400 and CoraLite®488-Conjugated AffiniPure Goat Anti-Mouse IgG(H+L).



1X10⁶ Jurkat cells were intracellularly stained with 0.2 ug Anti-Human TRAF6 (66498-1-Ig, Clone: 1D1E1) and CoraLite®488-Conjugated AffiniPure Goat Anti-Mouse IgG(H+L) at dilution 1:1000 (red), or 0.2 ug Mouse IgG1 Isotype Control (66360-1-Ig, Clone: T1F8D3F10) (blue). Cells were fixed with 4% PFA and permeabilized with Flow Cytometry Perm Buffer (PF00011-C).