

Nur für Forschungszwecke

# WWTR1 Monoklonaler Antikörper



Katalog-Nr.:66500-1-Ig

Vorgestelltes Produkt

7 Publikationen

## Allgemeine Informationen

<b>Katalog-Nr.:</b> 66500-1-Ig	<b>GenBank-Zugangsnummer:</b> BC014052	<b>Reinigungsmethode:</b> Protein-A-Reinigung
<b>Größe:</b> 150ul , Konzentration: 2522 µg/ml von25937 Nanodrop und 1000 µg/ml durch die Bradford-Methode mit BSA als Standard;	<b>GeneID (NCBI):</b> 25937	<b>CloneNo.:</b> 2A12A10
<b>Wirt:</b> Maus	<b>Vollständiger Name:</b> WW domain containing transcription regulator 1	<b>Empfohlene Verdünnungen:</b> WB 1:5000-1:50000 IHC 1:300-1:1200 IF 1:200-1:800
<b>Isotyp:</b> IgG1	<b>Berechnete Masse:</b> 44 kDa	
<b>Immunogen Katalognummer:</b> AG13330	<b>Beobachtete Masse:</b> 55 kDa	

## Anwendungen

### Geprüfte Anwendungen:

IF, IHC, WB, ELISA

### In Publikationen genannte Anwendungen:

IF, IHC, WB

### Getestete Reaktivität:

Human, Maus, Ratte

### Zitierte Arten:

Human, Maus, Ratte

**Hinweis-IHC: Antigenmaskierung mit TE-Puffer pH 9,0 empfohlen. (\*) Wahlweise kann die Antigenmaskierung auch mit Citratpuffer pH 6,0 erfolgen.**

### Positivkontrollen:

**WB :** A549-Zellen, 4T1-Zellen, HeLa-Zellen, HepG2-Zellen, Jurkat-Zellen, MCF-7-Zellen, MDA-MB-231-Zellen, MDA-MB-453s-Zellen, NIH/3T3-Zellen

**IHC :** humanes Leberkarzinomgewebe, humanes Mammakarzinomgewebe

**IF :** humanes Leberkarzinomgewebe,

## Hintergrundinformationen

TAZ, also referred as WWTR1, is a transcriptional co-activator with a PDZ-binding motif that is regulated by its interaction with 14-3-3 protein. TAZ is expressed in many primary tumors, such as breast cancer, thyroid carcinoma, colorectal cancer, and glioma. TAZ has been reported to be one of the nuclear effectors of Hippo-related pathways that regulate organ size control, cancer stem cell (CSC) properties, and epithelial-mesenchymal transition (EMT). TAZ has been defined for its role in the nucleus, where it functions directly as a transcriptional regulator by interacting with several nuclear factors as Runx2/Cbfa1, NHERF-2, TEF-1, TBX5, PAX3, PAX8 and TTF-1.

## Bemerkenswerte Veröffentlichungen

Verfasser	Pubmed ID	Journal	Anwendung
Xinghe Chen	36414118	Toxicol Appl Pharmacol	WB,IF
Xuyang Hu	35833021	Front Pharmacol	WB,IHC,IF
Adheesh Bhandari	31312369	Am J Transl Res	WB

## Lagerung

### Lagerungsbedingungen:

Bei -20°C lagern. Nach dem Versand ein Jahr lang stabil

### Lagerungspuffer:

PBS mit 0.02% Natriumazid und 50% Glycerin pH 7.3.

Aliquotieren ist nicht notwendig bei -20°C Lagerung

\*\*\* 20ul-Größen enthalten 0.1% BSA

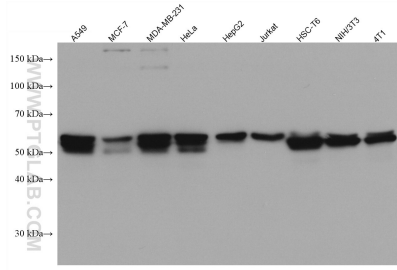
For technical support and original validation data for this product please contact:

T: 1 (888) 4PTGLAB (1-888-478-4522) (toll free in USA), or 1(312) 455-8498 (outside USA)

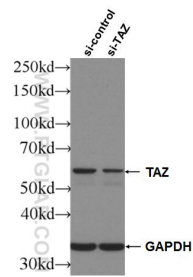
E: proteintech@ptglab.com  
W: ptglab.com

This product is exclusively available under Proteintech Group brand and is not available to purchase from any other manufacturer.

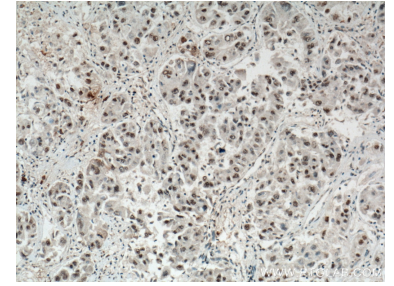
## Ausgewählte Validierungsdaten



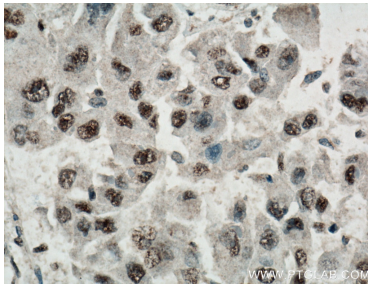
Various lysates were subjected to SDS PAGE followed by western blot with 66500-1-Ig (TAZ antibody) at dilution of 1:10000 incubated at room temperature for 1.5 hours.



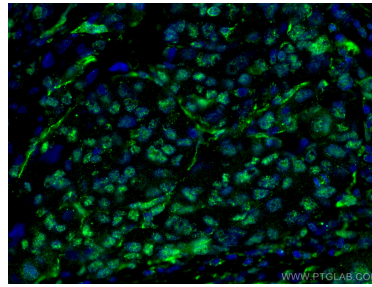
WB result of TAZ antibody (66500-1-Ig; 1:8000; incubated at room temperature for 1.5 hours) with sh-Control and sh-TAZ transfected HepG2 cells.



Immunohistochemical analysis of paraffin-embedded human liver cancer tissue slide using 66500-1-Ig (TAZ antibody) at dilution of 1:600 (under 10x lens. Heat mediated antigen retrieval with Tris-EDTA buffer (pH 9.0).



Immunohistochemical analysis of paraffin-embedded human liver cancer tissue slide using 66500-1-Ig (TAZ antibody) at dilution of 1:600 (under 40x lens. Heat mediated antigen retrieval with Tris-EDTA buffer (pH 9.0).



Immunofluorescent analysis of (4% PFA) fixed human liver cancer tissue using TAZ antibody (66500-1-Ig, Clone: 2A12A10) at dilution of 1:400 and CoraLite®488-Conjugated AffiniPure Goat Anti-Mouse IgG(H+L).