

Nur für Forschungszwecke

MDH1 Monoklonaler Antikörper

Katalog-Nr.:66505-1-Ig

Vorgestelltes Produkt



Allgemeine Informationen

Katalog-Nr.:
66505-1-Ig

Größe:
150ul, Konzentration: 1300 µg/ml von 4190
Nanodrop und 1000 µg/ml durch die
Bradford-Methode mit BSA als
Standard;

Wirt:
Maus

Isotyp:
IgG1

Immunogen Katalognummer:
AG8744

GenBank-Zugangsnummer:
BC001484

GeneID (NCBI):

Vollständiger Name:
malate dehydrogenase 1, NAD
(soluble)

Berechnete Masse:
334 aa, 36 kDa

Beobachtete Masse:
36-37 kDa

Reinigungsmethode:
Protein-G-Reinigung

CloneNo.:
1F9A2

Empfohlene Verdünnungen:
WB 1:2000-1:10000
IF 1:50-1:500

Anwendungen

Geprüfte Anwendungen:
IF, WB, ELISA

Getestete Reaktivität:
Human, Maus

Positivkontrollen:

WB: HeLa-Zellen, HEK-293-Zellen, Jurkat-Zellen,
NIH/3T3-Zellen, RAW 264.7-Zellen

IF: HepG2-Zellen,

Hintergrundinformationen

MDH1 (Malate dehydrogenase, cytoplasmic) is also named as MDHA and belongs to the LDH/MDH superfamily and MDH type 2 family which catalyzes the reversible oxidation of malate to oxaloacetate, utilizing the NAD/NADH cofactor system in the citric acid cycle. It can exist as a dimer and the dimeric MDH1 is the mitochondrial isoenzyme, whereas the tetrameric MDH2 is the glycosomal isoenzyme. (PMID:10693743)

Lagerung

Lagerungsbedingungen:

Bei -20°C lagern. Nach dem Versand ein Jahr lang stabil

Lagerungspuffer:

PBS mit 0.02% Natriumazid und 50% Glycerin pH 7.3.

Aliquotieren ist nicht notwendig bei -20°C Lagerung

*** 20ul-Größen enthalten 0.1% BSA

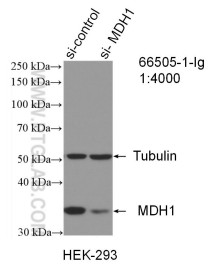
For technical support and original validation data for this product please contact:

T: 1 (888) 4PTGLAB (1-888-478-4522) (toll free
in USA), or 1(312) 455-8498 (outside USA)

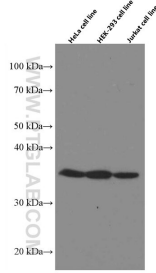
E: proteintech@ptglab.com
W: ptglab.com

This product is exclusively available under Proteintech Group brand and is not available to purchase from any other manufacturer.

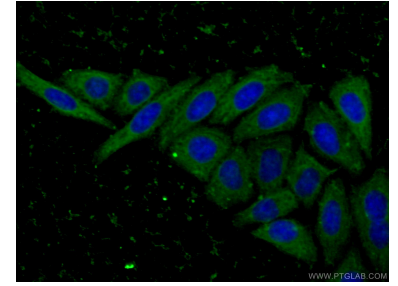
Ausgewählte Validierungsdaten



WB result of MDH1 antibody (66505-1-Ig; 1:4000; incubated at room temperature for 1.5 hours) with sh-Control and sh-MDH1 transfected HEK-293 cells.



Various lysates were subjected to SDS PAGE followed by western blot with 66505-1-Ig (MDH1 antibody) at dilution of 1:5000 incubated at room temperature for 1.5 hours.



Immunofluorescent analysis of (-20°C Ethanol) fixed HepG2 cells using 66505-1-Ig (MDH1 antibody) at dilution of 1:100 and CoraLite488-Conjugated AffiniPure Goat Anti-Mouse IgG(H+L).