

## Allgemeine Informationen

<b>Katalog-Nr.:</b> 66511-1-Ig	<b>GenBank-Zugangsnummer:</b> NM_002392	<b>Reinigungsmethode:</b> Protein-A-Reinigung
<b>Größe:</b> 150ul, Konzentration: 2000 µg/ml von4193 Nanodrop;	<b>GeneID (NCBI):</b> 150000	<b>CloneNo.:</b> 2A6C9
<b>Wirt:</b> Maus	<b>Vollständiger Name:</b> Mdm2 p53 binding protein homolog (mouse)	<b>Empfohlene Verdünnungen:</b> WB 1:1000-1:6000 IHC 1:150-1:600 IF 1:400-1:1600
<b>Isotyp:</b> IgG2b	<b>Berechnete Masse:</b> 55 kDa	
	<b>Beobachtete Masse:</b> 40-50 kDa	

## Anwendungen

### Geprüfte Anwendungen:

IF, IHC, WB, ELISA

### In Publikationen genannte Anwendungen:

CoIP, IF, IHC, IP, WB

### Getestete Reaktivität:

Human, Kaninchen, Maus, Ratte

### Zitierte Arten:

Human, Maus, Ratte

**Hinweis-IHC: Antigendemaskierung mit TE-Puffer pH 9,0 empfohlen. (\*) Wahlweise kann die Antigendemaskierung auch mit Citratpuffer pH 6,0 erfolgen.**

### Positivkontrollen:

WB : MCF-7-Zellen, A549-Zellen, Kaninchenhirngewebe, Maushirngewebe, Rattenhirngewebe, U-251-Zellen

IHC : humanes Mammakarzinomgewebe, humanes Leberkarzinomgewebe

IF : HeLa-Zellen,

## Hintergrundinformationen

MDM2, also known as HDM2, is a protein of the E3 ubiquitin-ligase family. MDM2 is recognized as a proto-oncogene and is over-expressed in a wide range of human malignancies including soft tissue carcinomas and breast cancer. MDM2 can bind to the p53 tumor suppressor protein with high affinity, and negatively regulates p53 by mediating its ubiquitination and proteosomal degradation (PMID: 17000718). MDM2 has some isoforms with calculated molecular mass of 25-55kD, and can be detected as 90-97kD. In addition to full length MDM2, two lower bands (85kD and 75kD) are often observed which are likely to be produced by translation initiation at methionine codons 50 and 60. Another isoform of MDM2 is often observed as 57-60kD in cell lines which is indeed a caspase cleavage product of MDM2 at residue 361 (PMID: 19565011, 9840926, 7689721).

## Bemerkenswerte Veröffentlichungen

Verfasser	Pubmed ID	Journal	Anwendung
Yanting Zhu	34552711	Pulm Circ	WB
Suping Li	34687132	J Cell Mol Med	IF
Jingwen Tan	36208777	Chem Biol Interact	WB

## Lagerung

### Lagerungsbedingungen:

Bei -20°C lagern. Nach dem Versand ein Jahr lang stabil

### Lagerungspuffer:

PBS mit 0.02% Natriumazid und 50% Glycerin pH 7.3.

Aliquotieren ist nicht notwendig bei -20°C Lagerung

\*\*\* 20ul-Größen enthalten 0.1% BSA

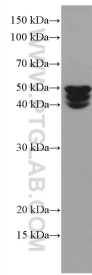
For technical support and original validation data for this product please contact:

T: 1 (888) 4PTGLAB (1-888-478-4522) (toll free in USA), or 1(312) 455-8498 (outside USA)

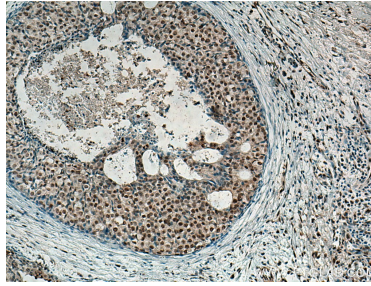
E: [proteintech@ptglab.com](mailto:proteintech@ptglab.com)  
 W: [ptglab.com](http://ptglab.com)

This product is exclusively available under Proteintech Group brand and is not available to purchase from any other manufacturer.

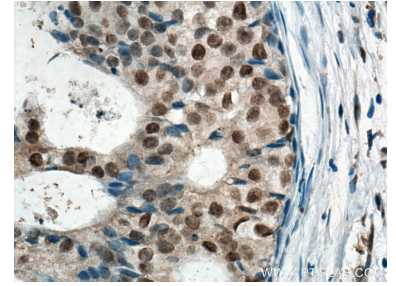
## Ausgewählte Validierungsdaten



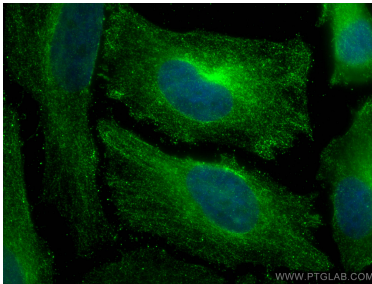
MCF-7 cells were subjected to SDS PAGE followed by western blot with 66511-1-Ig (MDM2 antibody) at dilution of 1:3000 incubated at room temperature for 1.5 hours.



Immunohistochemical analysis of paraffin-embedded human breast cancer tissue slide using 66511-1-Ig (MDM2 antibody) at dilution of 1:300 (under 10x lens). Heat mediated antigen retrieval with Tris-EDTA buffer (pH 9.0).



Immunohistochemical analysis of paraffin-embedded human breast cancer tissue slide using 66511-1-Ig (MDM2 antibody) at dilution of 1:300 (under 40x lens). Heat mediated antigen retrieval with Tris-EDTA buffer (pH 9.0).



Immunofluorescent analysis of (4% PFA) fixed HeLa cells using MDM2 antibody (66511-1-Ig, Clone: 2A6C9) at dilution of 1:800 and CoraLite@488-Conjugated AffiniPure Goat Anti-Mouse IgG(H+L).