

Allgemeine Informationen

Katalog-Nr.: 66530-1-Ig	GenBank-Zugangsnummer: BC002578	Reinigungsmethode: Protein-A-Reinigung
Größe: 150ul , Konzentration: 2100 µg/ml von3133 Nanodrop und 1000 µg/ml durch die Bradford-Methode mit BSA als Standard;	GeneID (NCBI): major histocompatibility complex, class I, E	CloneNo.: 1A4G3
Wirt: Maus	Berechnete Masse: 40 kDa	Empfohlene Verdünnungen: WB 1:2500-1:10000 IHC 1:200-1:800 IF 1:50-1:500
Isotyp: IgG2a	Beobachtete Masse: 40 kDa	
Immunogen Katalognummer: AG6724		

Anwendungen

Geprüfte Anwendungen: FC, IF, IHC, WB,ELISA	Positivkontrollen: WB : THP-1-Zellen, Daudi-Zellen, humanes Plazenta- Gewebe, HUVEC-Zellen, Jurkat-Zellen, Raji-Zellen, Ramos-Zellen
In Publikationen genannte Anwendungen: WB	IHC : humanes Tonsillitisgewebe, humanes Plazenta- Gewebe
Getestete Reaktivität: Human	IF : humanes Tonsillitisgewebe,
Zitierte Arten: Human	

Hinweis-IHC: Antigenmaskierung mit TE-Puffer pH 9,0 empfohlen. (*) Wahlweise kann die Antigenmaskierung auch mit Citratpuffer pH 6,0 erfolgen.

Hintergrundinformationen

Human major histocompatibility complex (MHC) antigens, also referred to as human leukocyte antigens (HLA), are encoded by genes located on the short arm of chromosome 6 (6p21.3). There are two classes of HLA antigens: class I and class II. This class I molecules are membrane glycoproteins composed of a heavy (alpha) chain which is encoded by a HLA class I gene, and β 2-microglobulin light (beta) chain. The most extensively characterized members of the HLA class I gene family are the genes encoding the major transplantation antigens, HLA-A, B and C. HLA-E is a non-classical MHC class I molecule. HLA-E is frequently overexpressed in tumor diseases, transplants and virus-infected cells and represents an immunomodulatory molecule by binding to the receptors CD94/NKG2A, -B and -C on NK and T cells. Due to its immune suppressive features HLA-E expression might represent an important mechanism of tumors to escape immune surveillance.(PMID: 667938; 3375250; 2249951; 27589686)

Bemerkenswerte Veröffentlichungen

Verfasser	Pubmed ID	Journal	Anwendung
Xiaowei Liu	36706761	Cancer Cell	WB

Lagerung

Lagerungsbedingungen:
Bei -20°C lagern. Nach dem Versand ein Jahr lang stabil

Lagerungspuffer:
PBS mit 0.02% Natriumazid und 50% Glycerin pH 7.3.

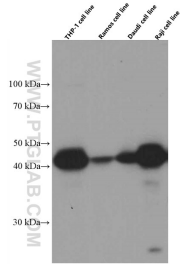
Aliquotieren ist nicht notwendig bei -20°C Lagerung

***** 20ul-Größen enthalten 0.1% BSA**

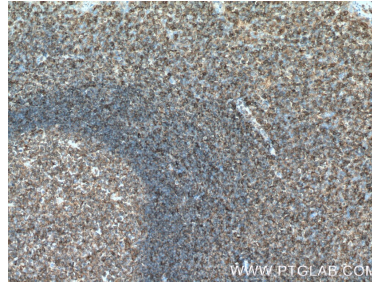
For technical support and original validation data for this product please contact:
 T: 1 (888) 4PTGLAB (1-888-478-4522) (toll free in USA), or 1(312) 455-8498 (outside USA)
 E: proteintech@ptglab.com
 W: ptglab.com

This product is exclusively available under Proteintech Group brand and is not available to purchase from any other manufacturer.

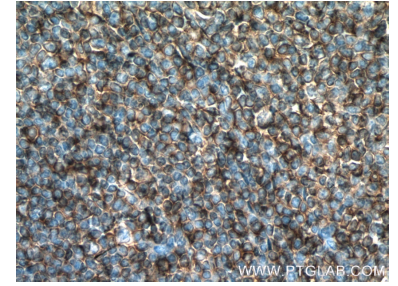
Ausgewählte Validierungsdaten



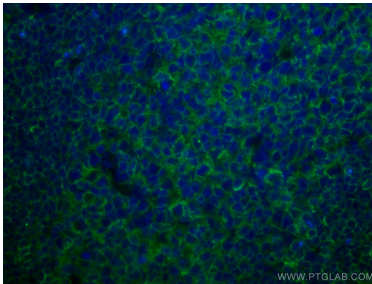
THP-1, Ramos, Daudi, and Raji cells were subjected to SDS PAGE followed by western blot with 66530-1-Ig (HLA-E antibody) at dilution of 1:5000 incubated at room temperature for 1.5 hours.



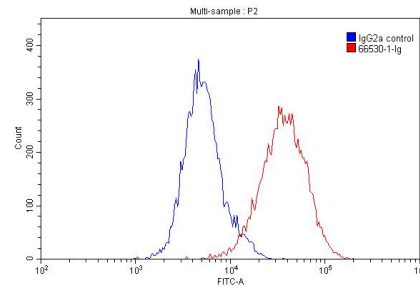
Immunohistochemical analysis of paraffin-embedded human tonsillitis tissue slide using 66530-1-Ig (HLA-E antibody) at dilution of 1:400 (under 10x lens. Heat mediated antigen retrieval with Tris-EDTA buffer (pH 9.0).



Immunohistochemical analysis of paraffin-embedded human tonsillitis tissue slide using 66530-1-Ig (HLA-E antibody) at dilution of 1:400 (under 40x lens. Heat mediated antigen retrieval with Tris-EDTA buffer (pH 9.0).



Immunofluorescent analysis of (4% PFA) fixed human tonsillitis tissue using HLA-E antibody (66530-1-Ig, Clone: 1A4G3) at dilution of 1:200 and CoraLite@488-Conjugated AffiniPure Goat Anti-Mouse IgG(H+L).



1×10^6 THP-1 cells were stained with 0.20ug HLA-E antibody (66530-1-Ig, red) and control antibody (blue). Fixed with 90% MeOH.