

Allgemeine Informationen

Katalog-Nr.: 66534-1-Ig	GenBank-Zugangsnummer: BC016320	Reinigungsmethode: Protein-A-Reinigung
Größe: 150ul , Konzentration: 1827 µg/ml von1509 Nanodrop und 1000 µg/ml durch die Bradford-Methode mit BSA als Standard;	GeneID (NCBI): cathepsin D	CloneNo.: 2F6F7
Wirt: Maus	Vollständiger Name: cathepsin D	Empfohlene Verdünnungen: WB 1:5000-1:50000 IHC 1:500-1:2000 IF 1:200-1:800
Isotyp: IgG2b	Berechnete Masse: 412 aa, 45 kDa	
Immunogen Katalognummer: AG15254	Beobachtete Masse: 32 kDa, 48 kDa, 52 kDa	

Anwendungen

Geprüfte Anwendungen: FC, IF, IHC, WB, ELISA	Positivkontrollen: WB : Saos-2 cells, HepG2-Zellen, MCF-7-Zellen, T-47D-Zellen IHC : humanes Leberkarzinomgewebe, humanes Mammakarzinomgewebe IF : HepG2-Zellen,
In Publikationen genannte Anwendungen: IF, WB	
Getestete Reaktivität: Human	
Zitierte Arten: Human, Ratte	
Hinweis-IHC: Antigenmaskierung mit TE-Puffer pH 9,0 empfohlen. (*) Wahlweise kann die Antigenmaskierung auch mit Citratpuffer pH 6,0 erfolgen.	

Hintergrundinformationen

CTSD (Cathepsin D) is also named as CPSD, belongs to the peptidase A1 family. It is ubiquitously expressed and is involved in proteolytic degradation, cell invasion, and apoptosis. Human CTSD is synthesized as a 52-kDa precursor that is converted into an active 48-kDa single-chain intermediate in the endosomes, and then into a fully active mature form, composed of a 34-kDa heavy chain and a 14-kDa light chain, in the lysosomes. It is a lysosomal acid protease found in neutrophils and monocytes and involved in the pathogenesis of several diseases such as breast cancer and possibly Alzheimer disease. (PMID: 27114232, PMID: 30717773, PMID: 30051532)

Bemerkenswerte Veröffentlichungen

Verfasser	Pubmed ID	Journal	Anwendung
Zhiyuan Wu	34575099	Life (Basel)	WB,IF
Hualin Fu	36448495	FEBS Lett	IF
Peipei Ding	35649359	Cell Rep	WB

Lagerung

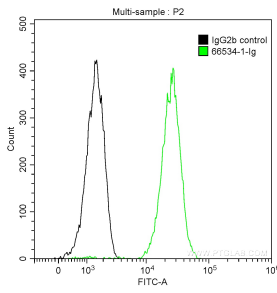
Lagerungsbedingungen:
Bei -20°C lagern. Nach dem Versand ein Jahr lang stabil
Lagerungspuffer:
PBS mit 0.02% Natriumazid und 50% Glycerin pH 7.3.
Aliquotieren ist nicht notwendig bei -20°C Lagerung

*** 20ul-Größen enthalten 0.1% BSA

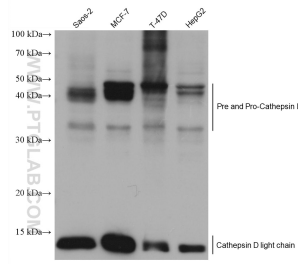
For technical support and original validation data for this product please contact:
T: 1 (888) 4PTGLAB (1-888-478-4522) (toll free in USA), or 1(312) 455-8498 (outside USA)
E: proteintech@ptglab.com
W: ptglab.com

This product is exclusively available under Proteintech Group brand and is not available to purchase from any other manufacturer.

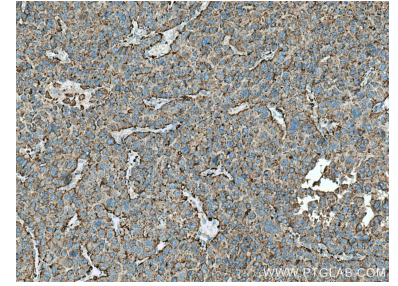
Ausgewählte Validierungsdaten



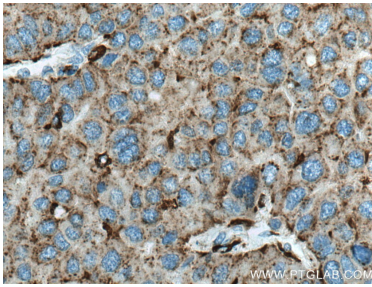
1x10⁶ HepG2 cells were intracellularly stained with 0.2 µg Anti-Human Cathepsin D (66534-1-Ig, Clone:2F6F7) and CoraLite®488-Conjugated AffiniPure Goat Anti-Mouse IgG(H+L) at dilution 1:1000 (green), and 0.2 µg Control Antibody. Cells were fixed with 90% MeOH.



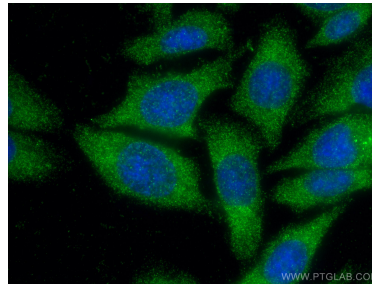
Various lysates were subjected to SDS PAGE followed by western blot with 66534-1-Ig (Cathepsin D antibody) at dilution of 1:10000 incubated at room temperature for 1.5 hours.



Immunohistochemical analysis of paraffin-embedded human liver cancer tissue slide using 66534-1-Ig (Cathepsin D antibody) at dilution of 1:1000 (under 10x lens). Heat mediated antigen retrieval with Tris-EDTA buffer (pH 9.0).



Immunohistochemical analysis of paraffin-embedded human liver cancer tissue slide using 66534-1-Ig (Cathepsin D antibody) at dilution of 1:1000 (under 40x lens). Heat mediated antigen retrieval with Tris-EDTA buffer (pH 9.0).



Immunofluorescent analysis of (-20°C Ethanol) fixed HepG2 cells using Cathepsin D antibody (66534-1-Ig, Clone: 2F6F7) at dilution of 1:400 and CoraLite®488-Conjugated AffiniPure Goat Anti-Mouse IgG(H+L).