

# STAT1 Monoklonaler Antikörper

Katalog-Nr.: 66545-1-Ig

Vorgestelltes Produkt

12 Publikationen

## Allgemeine Informationen

### Katalog-Nr.:

66545-1-Ig

### Größe:

150ul, Konzentration: 2000 µg/ml von 6772

Nanodrop und 1000 µg/ml durch die Bradford-Methode mit BSA als Standard;

### Wirt:

Maus

### Isotyp:

IgG2a

### Immunogen Katalognummer:

AG0199

### GenBank-Zugangsnummer:

BC002704

### GeneID (NCBI):

von 6772

### Vollständiger Name:

signal transducer and activator of transcription 1, 91kDa

### Berechnete Masse:

83 kDa

### Beobachtete Masse:

84 kDa

### Reinigungsmethode:

Protein-A-Reinigung

### CloneNo.:

1F7C6

### Empfohlene Verdünnungen:

WB 1:2000-1:10000

IHC 1:200-1:800

## Anwendungen

### Geprüfte Anwendungen:

IHC, WB, ELISA

### In Publikationen genannte Anwendungen:

CoIP, IF, IHC, IP, WB

### Getestete Reaktivität:

Human, Maus, Ratte

### Zitierte Arten:

Hausschwein, Human, Maus

**Hinweis-IHC: Antigendemaskierung mit TE-Puffer pH 9,0 empfohlen. (\*) Wahlweise kann die Antigendemaskierung auch mit Citratpuffer pH 6,0 erfolgen.**

### Positivkontrollen:

WB : HEK-293-Zellen, HeLa-Zellen, Jurkat-Zellen, MCF-7-Zellen, NIH/3T3-Zellen

IHC : humanes Ovarialkarzinomgewebe, humanes Tonsillitisgewebe

## Hintergrundinformationen

STAT1 (signal transducers and activators of transcription 1) is a member of the STAT protein family. In response to cytokines and growth factors, STAT family members are phosphorylated by the receptor associated kinases, and then form homo- or heterodimers that translocate to the cell nucleus where they act as transcription activators. Various ligands, including interferons- and -, EGF, PDGF and IL-6, can activate STAT1. STAT1 protein mediates the expression of a variety of genes, which is thought to be important for cell viability in response to different cell stimuli and pathogens.

## Bemerkenswerte Veröffentlichungen

Verfasser	Pubmed ID	Journal	Anwendung
Huimin Liu	36315588	PLoS Pathog	WB, IP
Shiguan Wang	30286793	Arthritis Res Ther	WB, CoIP
Teng Lil	34818332	PLoS Negl Trop Dis	WB

## Lagerung

### Lagerungsbedingungen:

Bei -20°C lagern. Nach dem Versand ein Jahr lang stabil

### Lagerungspuffer:

PBS mit 0.02% Natriumazid und 50% Glycerin pH 7.3.

Aliquotieren ist nicht notwendig bei -20°C Lagerung

\*\*\* 20ul-Größen enthalten 0.1% BSA

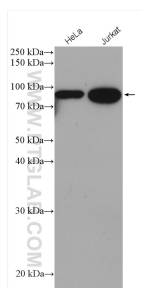
For technical support and original validation data for this product please contact:

T: 1 (888) 4PTGLAB (1-888-478-4522) (toll free in USA), or 1(312) 455-8498 (outside USA)

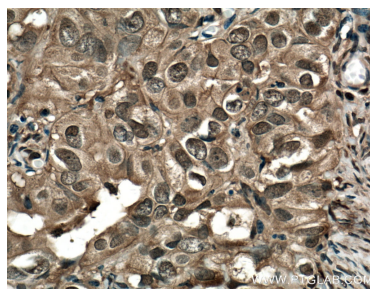
E: [proteintech@ptglab.com](mailto:proteintech@ptglab.com)  
W: [ptglab.com](http://ptglab.com)

This product is exclusively available under Proteintech Group brand and is not available to purchase from any other manufacturer.

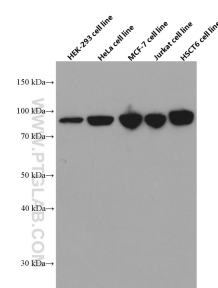
## Ausgewählte Validierungsdaten



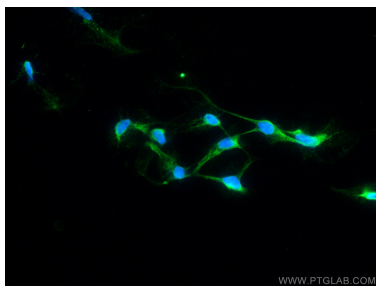
Various lysates were subjected to SDS PAGE followed by western blot with 66545-1-Ig (STAT1 antibody) at dilution of 1:2000 incubated at room temperature for 1.5 hours.



Immunohistochemical analysis of paraffin-embedded human ovary tumor tissue slide using 66545-1-Ig (STAT1 antibody) at dilution of 1:400 (under 40x lens. Heat mediated antigen retrieval with Tris-EDTA buffer (pH 9.0).



Various cells were subjected to SDS PAGE followed by western blot with 66545-1-Ig (STAT1 antibody) at dilution of 1:5000 incubated at room temperature for 1.5 hours.



Immunofluorescent analysis of (4% PFA) fixed HEK-293 cells using STAT1 antibody (66545-1-Ig, Clone: 1F7C6) at dilution of 1:800 and CoraLite®488-Conjugated AffiniPure Goat Anti-Mouse IgG(H+L).