

Nur für Forschungszwecke

PEDF Monoklonaler Antikörper

Katalog-Nr.:66554-1-Ig



Allgemeine Informationen

Katalog-Nr.: 66554-1-Ig	GenBank-Zugangsnummer: BC013984	Reinigungsmethode: Protein-A-Reinigung
Größe: 150ul , Konzentration: 1000 µg/ml von5176 Nanodrop und 1000 µg/ml durch die Bradford-Methode mit BSA als Standard;	GeneID (NCBI): 5176	CloneNo.: 2C5C8
Wirt: Maus	Vollständiger Name: serpin peptidase inhibitor, clade F (alpha-2 antiplasmin, pigment epithelium derived factor), member 1	Empfohlene Verdünnungen: WB 1:2000-1:10000
Isotyp: IgG1	Berechnete Masse: 418 aa, 46 kDa	
Immunogen Katalognummer: AG26660	Beobachtete Masse: 46-50 kDa	

Anwendungen

Geprüfte Anwendungen: WB,ELISA	Positivkontrollen: WB : humanes Plasmagewebe, Hausschwein- Plasmagewebe, humanes Blutgewebe
Getestete Reaktivität: Hausschwein, Human	

Hintergrundinformationen

PEDF also known as serpin F1 (SERPINF1), is a multifunctional secreted protein that has anti-angiogenic, anti-tumorigenic, and neurotrophic functions. It is an approximately 50-kDa secreted protein that is widely expressed, including by osteoblasts and osteoclasts. PEDF is also one of the most abundant secretory products of adipocytes, and circulating concentrations of PEDF correlate positively with body fat mass and INS resistance. PEDF is a neurotrophic factor involved in neuronal differentiation in retinoblastoma cells. Mutations in this gene were found in individuals with osteogenesis imperfecta, type VI.

Lagerung

Lagerungsbedingungen:
Bei -20°C lagern. Nach dem Versand ein Jahr lang stabil
Lagerungspuffer:
PBS mit 0.02% Natriumazid und 50% Glycerin pH 7.3.
Aliquotieren ist nicht notwendig bei -20°C Lagerung

*** 20ul-Größen enthalten 0.1% BSA

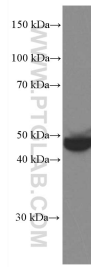
For technical support and original validation data for this product please contact:

T: 1 (888) 4PTGLAB (1-888-478-4522) (toll free
in USA), or 1(312) 455-8498 (outside USA)

E: proteintech@ptglab.com
W: ptglab.com

This product is exclusively available under Proteintech Group brand and is not available to purchase from any other manufacturer.

Ausgewählte Validierungsdaten



human plasma were subjected to SDS PAGE followed by western blot with 66554-1-Ig (PEDF antibody) at dilution of 1:5000 incubated at room temperature for 1.5 hours.