

## Allgemeine Informationen

|  |  |   |
|--|--|---|
| <b>Katalog-Nr.:</b><br>66556-1-Ig  | <b>GenBank-Zugangsnummer:</b><br>BC053617                              | <b>Reinigungsmethode:</b><br>Protein-A-Reinigung  |
| <b>Größe:</b><br>150ul , Konzentration: 1700 µg/ml von8915<br>Nanodrop und 1000 µg/ml durch die<br>Bradford-Methode mit BSA als<br>Standard; | <b>GeneID (NCBI):</b><br>Vollständiger Name:<br>B-cell CLL/Lymphoma 10 | <b>CloneNo.:</b><br>2E8G5   |
| <b>Wirt:</b><br>Maus   | <b>Berechnete Masse:</b><br>233 aa, 26 kDa                             | <b>Empfohlene Verdünnungen:</b><br>WB 1:1000-1:6000<br>IHC 1:350-1:1400<br>IF 1:200-1:800 |
| <b>Isotyp:</b><br>IgG1   | <b>Beobachtete Masse:</b><br>30-32 kDa                                 |   |
| <b>Immunogen Katalognummer:</b><br>AG12162   |  |   |

## Anwendungen

|  |   |
|--|---|
| <b>Geprüfte Anwendungen:</b><br>FC, IF, IHC, WB, ELISA   | <b>Positivkontrollen:</b>   |
| <b>In Publikationen genannte Anwendungen:</b><br>WB  | <b>WB :</b> HeLa-Zellen, HCT 116-Zellen, HepG2-Zellen,<br>Jurkat-Zellen, K-562-Zellen, MOLT-4-Zellen, Raji-<br>Zellen, Ramos-Zellen |
| <b>Getestete Reaktivität:</b><br>Human   | <b>IHC :</b> humanes Tonsillitisgewebe, humanes<br>Lymphomgewebe  |
| <b>Zitierte Arten:</b><br>Human  | <b>IF :</b> HepG2-Zellen,   |
| <b>Hinweis-IHC: Antigenmaskierung mit TE-<br/>Puffer pH 9,0 empfohlen. (*) Wahlweise<br/>kann die Antigenmaskierung auch mit<br/>Citratpuffer pH 6,0 erfolgen.</b> |   |

## Hintergrundinformationen

### Bemerkenswerte Veröffentlichungen

| Verfasser   | Pubmed ID | Journal                    | Anwendung |
|-------------|-----------|----------------------------|-----------|
| Yinwu Shang | 31178130  | Biochem Biophys Res Commun | WB        |

## Lagerung

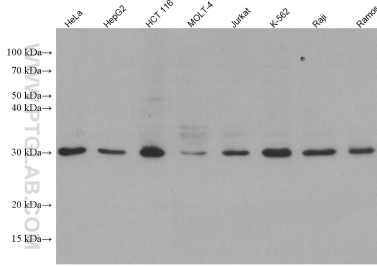
**Lagerungsbedingungen:**  
Bei -20°C lagern. Nach dem Versand ein Jahr lang stabil  
**Lagerungspuffer:**  
PBS mit 0.02% Natriumazid und 50% Glycerin pH 7.3.  
Aliquotieren ist nicht notwendig bei -20°C Lagerung

\*\*\* 20ul-Größen enthalten 0.1% BSA

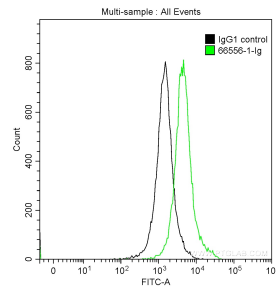
For technical support and original validation data for this product please contact:  
T: 1 (888) 4PTGLAB (1-888-478-4522) (toll free in USA), or 1(312) 455-8498 (outside USA)  
E: [proteintech@ptglab.com](mailto:proteintech@ptglab.com)  
W: [ptglab.com](http://ptglab.com)

This product is exclusively available under Proteintech Group brand and is not available to purchase from any other manufacturer.

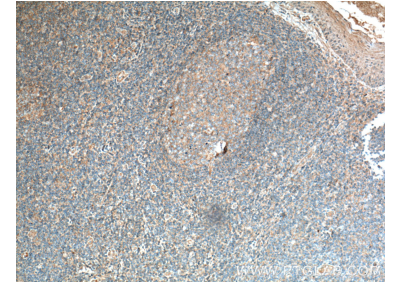
## Ausgewählte Validierungsdaten



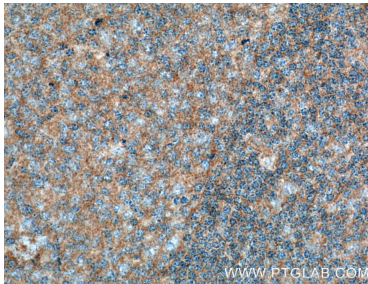
Various lysates were subjected to SDS PAGE followed by western blot with 66556-1-Ig (BCL10 antibody) at dilution of 1:3000 incubated at room temperature for 1.5 hours.



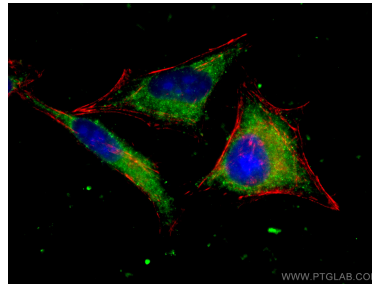
$1 \times 10^6$  Jurkat cells were intracellularly stained with 0.2  $\mu$ g Anti-Human BCL10 (66556-1-Ig, Clone:2E8G5) and CoraLite<sup>®</sup>488-Conjugated AffiniPure Goat Anti-Mouse IgG(H+L) at dilution 1:1000 (green), and 0.2  $\mu$ g Mouse IgG1 Isotype Control (66360-1-Ig, Clone: T1F8D3F10) (black). Cells were fixed with 90% MeOH.



Immunohistochemical analysis of paraffin-embedded human tonsillitis tissue slide using 66556-1-Ig (BCL10 antibody) at dilution of 1:700 (under 10x lens. Heat mediated antigen retrieval with Tris-EDTA buffer (pH 9.0).



Immunohistochemical analysis of paraffin-embedded human tonsillitis tissue slide using 66556-1-Ig (BCL10 antibody) at dilution of 1:700 (under 40x lens. Heat mediated antigen retrieval with Tris-EDTA buffer (pH 9.0).



Immunofluorescent analysis of (-20°C Ethanol) fixed HepG2 cells using BCL10 antibody (66556-1-Ig, Clone: 2E8G5) at dilution of 1:400 and CoraLite<sup>®</sup>488-Conjugated AffiniPure Goat Anti-Mouse IgG(H+L), CL594-Phalloidin (red).