

Allgemeine Informationen

Katalog-Nr.: 66559-1-Ig	GenBank-Zugangsnummer: BC001878	Reinigungsmethode: Protein-A-Reinigung
Größe: 150ul , Konzentration: 1000 µg/ml durch die Bradford-Methode mit BSA als Standard;	GeneID (NCBI): 4086	CloneNo.: 2D10B8
Wirt: Maus	Vollständiger Name: SMAD family member 1	Empfohlene Verdünnungen: WB 1:2000-1:10000 IHC 1:250-1:1000
Isotyp: IgG1	Berechnete Masse: 52 kDa	
Immunogen Katalognummer: AG0701	Beobachtete Masse: 52 kDa	

Anwendungen

Geprüfte Anwendungen:

IHC, WB, ELISA

In Publikationen genannte Anwendungen:

WB

Getestete Reaktivität:

Human, Maus, Ratte

Zitierte Arten:

Human

Hinweis-IHC: Antigenmaskierung mit TE-Puffer pH 9,0 empfohlen. (*) Wahlweise kann die Antigenmaskierung auch mit Citratpuffer pH 6,0 erfolgen.

Positivkontrollen:

WB : HT-1080.Zellen, HEK-293-Zellen, HeLa-Zellen, HepG2-Zellen, NIH/3T3-Zellen, RAW 264.7-Zellen

IHC : humanes Gliomgewebe,

Hintergrundinformationen

Transforming growth factor- β (TGF- β) superfamily is recognized as one of the largest families of secreted multifunctional peptides exerting different biological effects on a large variety of cell types, such as regulation of hormone secretion, stimulation of extracellular matrix formation, the inhibition of proliferation of many cell types, cell survival, bone formation, and chemotaxis for inflammatory cells. One of the most important proteins that modulate TGF- β ligand activity is the SMAD family proteins. SMAD1 is one of the receptor-activated Smads. It's also a signal transducers of BMP signaling and binds to several proteins involved in ubiquitin-proteasome system (UPS). Transcriptional modulator activated by BMP (bone morphogenetic proteins) type 1 receptor kinase

Bemerkenswerte Veröffentlichungen

Verfasser	Pubmed ID	Journal	Anwendung
Jinliang Chen	29715457	Biochem Biophys Res Commun	WB
Xianzhe Huang	34973370	Mol Cell Endocrinol	WB
Lin Lu	35487890	Oncogenesis	WB

Lagerung

Lagerungsbedingungen:

Bei -20°C lagern. Nach dem Versand ein Jahr lang stabil

Lagerungspuffer:

PBS mit 0.02% Natriumazid und 50% Glycerin pH 7.3.

Aliquotieren ist nicht notwendig bei -20°C Lagerung

***** 20ul-Größen enthalten 0.1% BSA**

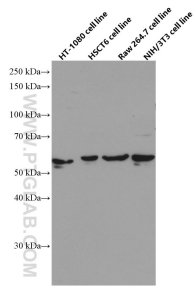
For technical support and original validation data for this product please contact:

T: 1 (888) 4PTGLAB (1-888-478-4522) (toll free in USA), or 1(312) 455-8498 (outside USA)

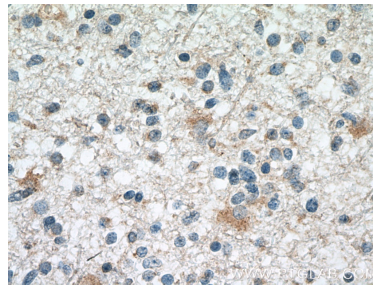
E: proteintech@ptglab.com
 W: ptglab.com

This product is exclusively available under Proteintech Group brand and is not available to purchase from any other manufacturer.

Ausgewählte Validierungsdaten



Various lysates were subjected to SDS PAGE followed by western blot with 66559-1-Ig (SMAD1 antibody) at dilution of 1:5000 incubated at room temperature for 1.5 hours.



Immunohistochemical analysis of paraffin-embedded human gliomas tissue slide using 66559-1-Ig (SMAD1 antibody) at dilution of 1:500 (under 40x lens. Heat mediated antigen retrieval with Tris-EDTA buffer (pH 9.0)).