

## Allgemeine Informationen

<b>Katalog-Nr.:</b> 66562-1-Ig	<b>GenBank-Zugangsnummer:</b> BC009363	<b>Reinigungsmethode:</b> Protein-A-Reinigung
<b>Größe:</b> 150ul , Konzentration: 1800 µg/ml von56993 Nanodrop und 1000 µg/ml durch die Bradford-Methode mit BSA als Standard;	<b>GeneID (NCBI):</b> 56993	<b>CloneNo.:</b> 1C2B11
<b>Wirt:</b> Maus	<b>Vollständiger Name:</b> translocase of outer mitochondrial membrane 22 homolog (yeast)	<b>Empfohlene Verdünnungen:</b> WB 1:5000-1:50000 IHC 1:50-1:500 IF 1:400-1:1600
<b>Isotyp:</b> IgG2a	<b>Berechnete Masse:</b> 15 kDa	
<b>Immunogen Katalognummer:</b> AG1797	<b>Beobachtete Masse:</b> 22 kDa	

## Anwendungen

<b>Geprüfte Anwendungen:</b> FC, IF, IHC, WB, ELISA	<b>Positivkontrollen:</b> <b>WB</b> : A431-Zellen, HEK-293-Zellen, HeLa-Zellen, HepG2-Zellen, Jurkat-Zellen, K-562-Zellen, L02-Zellen, Raji-Zellen, T-47D-Zellen
<b>In Publikationen genannte Anwendungen:</b> IF, WB	<b>IHC</b> : humanes Nierengewebe, humanes Kolonkarzinomgewebe
<b>Getestete Reaktivität:</b> Human	<b>IF</b> : HepG2-Zellen,
<b>Zitierte Arten:</b> Human, Maus	

**Hinweis-IHC: Antigenmaskierung mit TE-Puffer pH 9,0 empfohlen. (\*) Wahlweise kann die Antigenmaskierung auch mit Citratpuffer pH 6,0 erfolgen.**

## Hintergrundinformationen

Tom22 is a central receptor component of the translocase of the outer membrane of mitochondria responsible for the recognition and translocation of cytosolically synthesized mitochondrial preproteins. It is showed in UniProt that phosphorylation is performed at three positions of this protein which may increase the molecular weight. Catalog#66562-1-Ig recognises the 22 kDa protein larger than the calculated MW which is 15 kDa. Besides, it has been reported the MV of TOMM22 is 22 kDa (PMID:19285029).

## Bemerkenswerte Veröffentlichungen

Verfasser	Pubmed ID	Journal	Anwendung
Qiang Wang	34446444	Science	WB
Wenjie Bao	35933512	Nat Commun	IF

## Lagerung

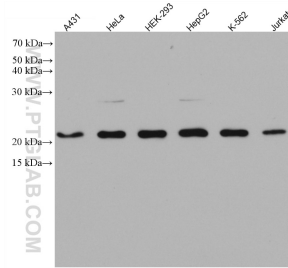
**Lagerungsbedingungen:**  
Bei -20°C lagern. Nach dem Versand ein Jahr lang stabil  
**Lagerungspuffer:**  
PBS mit 0.02% Natriumazid und 50% Glycerin pH 7.3.  
Aliquotieren ist nicht notwendig bei -20°C Lagerung

**\*\*\* 20ul-Größen enthalten 0.1% BSA**

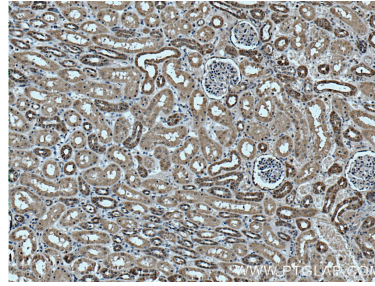
For technical support and original validation data for this product please contact:  
T: 1 (888) 4PTGLAB (1-888-478-4522) (toll free in USA), or 1(312) 455-8498 (outside USA)  
E: [proteintech@ptglab.com](mailto:proteintech@ptglab.com)  
W: [ptglab.com](http://ptglab.com)

**This product is exclusively available under Proteintech Group brand and is not available to purchase from any other manufacturer.**

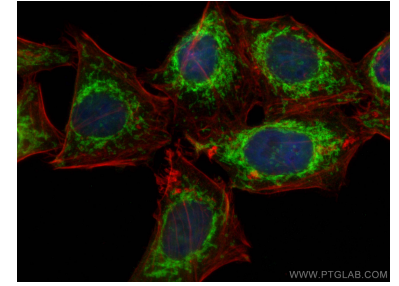
## Ausgewählte Validierungsdaten



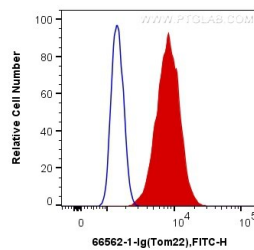
Various lysates were subjected to SDS PAGE followed by western blot with 66562-1-Ig (Tom22 antibody) at dilution of 1:10000 incubated at room temperature for 1.5 hours.



Immunohistochemical analysis of paraffin-embedded human kidney tissue slide using 66562-1-Ig (Tom22 antibody) at dilution of 1:200 (under 10x lens. Heat mediated antigen retrieval with Tris-EDTA buffer (pH 9.0).



Immunofluorescent analysis of (4% PFA) fixed HepG2 cells using Tom22 antibody (66562-1-Ig, Clone: 1C2B11) at dilution of 1:800 and CoraLite®488-Conjugated AffiniPure Goat Anti-Mouse IgG(H+L), CL594-Phalloidin (red).



$1 \times 10^6$  HEK-293 cells were intracellularly stained with 0.4  $\mu$ g Anti-Human Tom22 (66562-1-Ig, Clone:1C2B11) and CoraLite®488-Conjugated AffiniPure Goat Anti-Mouse IgG(H+L) at dilution 1:1000 (red), or 0.4  $\mu$ g Control Antibody. Cells were fixed with 4% PFA and permeabilized with Flow Cytometry Perm Buffer (PF00011-C).