

## Allgemeine Informationen

<b>Katalog-Nr.:</b> 66563-1-Ig	<b>GenBank-Zugangsnummer:</b> BC014969	<b>Reinigungsmethode:</b> Protein-A-Reinigung
<b>Größe:</b> 150ul , Konzentration: 1300 µg/ml von22926 Nanodrop und 1000 µg/ml durch die Bradford-Methode mit BSA als Standard;	<b>GeneID (NCBI):</b> 22926	<b>CloneNo.:</b> 3B7E4
<b>Wirt:</b> Maus	<b>Vollständiger Name:</b> activating transcription factor 6	<b>Empfohlene Verdünnungen:</b> WB 1:5000-1:50000 IHC 1:250-1:1000 IF 1:50-1:500
<b>Isotyp:</b> IgG1	<b>Berechnete Masse:</b> 75 kDa	
<b>Immunogen Katalognummer:</b> AG21456	<b>Beobachtete Masse:</b> 90-100 kDa	

## Anwendungen

<b>Geprüfte Anwendungen:</b> FC, IF, IHC, WB, ELISA	<b>Positivkontrollen:</b> <b>WB</b> : U2OS-Zellen, 4T1-Zellen, HEK-293-Zellen, HeLa-Zellen, Jurkat-Zellen, K-562-Zellen, MCF-7-Zellen, NIH/3T3-Zellen, RAW 264.7-Zellen
<b>In Publikationen genannte Anwendungen:</b> IF, WB	<b>IHC</b> : humanes Zervixkarzinomgewebe, humanes Mammakarzinomgewebe
<b>Getestete Reaktivität:</b> Human, Maus, Ratte	<b>IF</b> : HepG2-Zellen,
<b>Zitierte Arten:</b> Human, Maus, Ratte	

**Hinweis-IHC: Antigendemaskierung mit TE-Puffer pH 9,0 empfohlen. (\*) Wahlweise kann die Antigendemaskierung auch mit Citratpuffer pH 6,0 erfolgen.**

## Hintergrundinformationen

Activating transcription factor 6 (ATF6) is a transcription factor that acts during endoplasmic reticulum stress by activating unfolded protein response target genes. Binds DNA on the 5'-CCAC[GA]-3' half of the ER stress response element (ERSE) (5'-CCAAT-N(9)-CCAC[GA]-3') and of ERSE II (5'-ATTGG-N-CCACG-3'). Binding to ERSE requires binding of NF- $\kappa$ B to ERSE. Could also be involved in activation of transcription by the serum response factor. During unfolded protein response an approximative 50 kDa fragment containing the cytoplasmic transcription factor domain is released by proteolysis. The cleavage seems to be performed sequentially by site-1 and site-2 proteases. The fully glycosylated form of ATF6, a 670 amino acid protein, exhibits an electrophoretic mobility of ~90 kDa in denaturing SDS-gels, in part because of the glycosylated modifications. ATF6 has 3 consensus sites for N-linked glycosylation and exists constitutively as a glycosylated protein. Differentially glycosylated ATF6 forms may result from mutations or experimental treatment (PMID:15804611) (PMID:14699159). The antibody recognizes cleaved and fully glycosylated forms of ATF6.

## Bemerkenswerte Veröffentlichungen

Verfasser	Pubmed ID	Journal	Anwendung
Piaopiao Wen	36139350	Cells	WB
Qi Xu	36341965	Environ Toxicol Pharmacol	WB
Simin Zhou	34744770	Front Physiol	WB,IF

## Lagerung

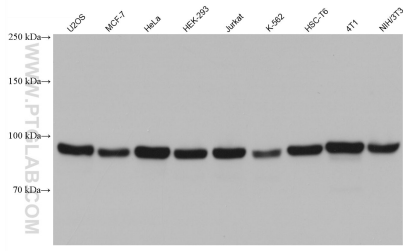
**Lagerungsbedingungen:**  
Bei -20°C lagern. Nach dem Versand ein Jahr lang stabil  
**Lagerungspuffer:**  
PBS mit 0.02% Natriumazid und 50% Glycerin pH 7.3.  
Aliquotieren ist nicht notwendig bei -20°C Lagerung

\*\*\* 20ul-Größen enthalten 0.1% BSA

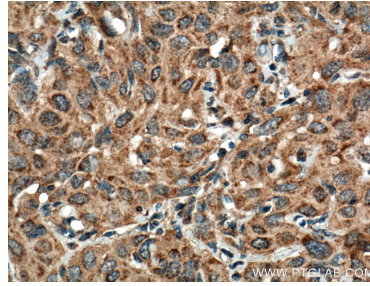
For technical support and original validation data for this product please contact:  
T: 1 (888) 4PTGLAB (1-888-478-4522) (toll free in USA), or 1(312) 455-8498 (outside USA)  
E: [proteintech@ptglab.com](mailto:proteintech@ptglab.com)  
W: [ptglab.com](http://ptglab.com)

This product is exclusively available under Proteintech Group brand and is not available to purchase from any other manufacturer.

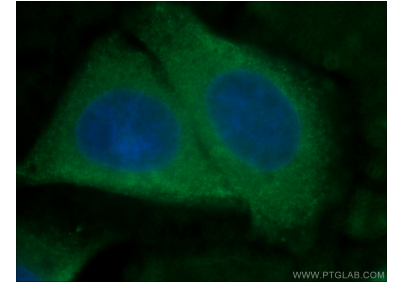
## Ausgewählte Validierungsdaten



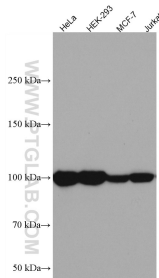
Various lysates were subjected to SDS PAGE followed by western blot with 66563-1-Ig (ATF6 antibody) at dilution of 1:10000 incubated at room temperature for 1.5 hours.



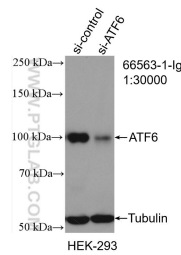
Immunohistochemical analysis of paraffin-embedded human cervical cancer tissue slide using 66563-1-Ig (ATF6 antibody) at dilution of 1:500 (under 40x lens. Heat mediated antigen retrieval with Tris-EDTA buffer (pH 9.0).



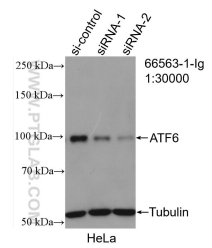
Immunofluorescent analysis of (4% PFA) fixed HepG2 cells using 66563-1-Ig (ATF6 antibody) at dilution of 1:100 and Alexa Fluor 488-conjugated AffiniPure Goat Anti-Mouse IgG(H+L).



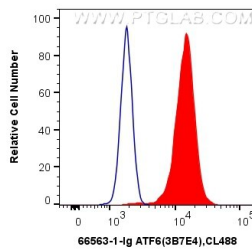
Various lysates were subjected to SDS PAGE followed by western blot with 66563-1-Ig (ATF6 antibody) at dilution of 1:10000 incubated at room temperature for 1.5 hours.



WB result of ATF6 antibody (66563-1-Ig; 1:30000; incubated at room temperature for 1.5 hours) with sh-Control and sh-ATF6 transfected HEK-293 cells.



WB result of ATF6 antibody (66563-1-Ig; 1:30000; incubated at room temperature for 1.5 hours) with sh-Control and sh-ATF6 transfected HeLa cells.



1X10<sup>6</sup> HeLa cells were intracellularly stained with 0.4 ug Anti-Human ATF6 (66563-1-Ig, Clone:3B7E4) and CoraLite®488-Conjugated AffiniPure Goat Anti-Mouse IgG(H+L) at dilution 1:1000 (red), or 0.4 ug Control Antibody. Cells were fixed and permeabilized with Transcription Factor Staining Buffer Kit (PF00011).