

Nur für Forschungszwecke

LATS1 Monoklonaler Antikörper

Katalog-Nr.:66569-1-Ig

Vorgestelltes Produkt



Allgemeine Informationen

Katalog-Nr.:

66569-1-Ig

Größe:

150ul, Konzentration: 700 µg/ml durch die Bradford-Methode mit BSA als Standard;

Wirt:

Maus

Isotyp:

IgG1

Immunogen Katalognummer:

AG11140

GenBank-Zugangsnummer:

BC015665

GeneID (NCBI):

9113

Vollständiger Name:

LATS, large tumor suppressor, homolog 1 (Drosophila)

Berechnete Masse:

15 kDa, 127 kDa

Beobachtete Masse:

140-150 kDa, 120 kDa

Reinigungsmethode:

Protein-G-Reinigung

CloneNo.:

2A8F1

Empfohlene Verdünnungen:

WB 1:1000-1:3000

Anwendungen

Geprüfte Anwendungen:

WB,ELISA

Getestete Reaktivität:

Human

Positivkontrollen:

WB : HepG2-Zellen, HEK-293-Zellen, HeLa-Zellen, T-47D-Zellen

Hintergrundinformationen

LATS1(Large tumor suppressor homolog 1) is also named as WARTS and belongs to the AGC Ser/Thr protein kinase family. The gene encodes a highly conserved (from fly to human) protein kinase that plays a crucial role in the prevention of tumor formation by controlling the progression of mitosis. The expression of both long(170 kDa) and short lats1 isoforms(120 kDa) in vertebrate retinal cells raises the possibility that these lats1 proteins may act as negative key regulators of the cell cycle each of them performing a unique role (PMID:15777619). In mammalian cells, LATS1 was phosphorylated in a cell cycle-dependent manner and complexed with CDC2 in early mitosis (PMID:9988268). LATS1 also can be detected as 120 kDa and 140-150 kDa, and play a key role in the regulation of Hippo pathway (PMID: 27940445).

Lagerung

Lagerungsbedingungen:

Bei -20°C lagern. Nach dem Versand ein Jahr lang stabil

Lagerungspuffer:

PBS mit 0.02% Natriumazid und 50% Glycerin pH 7.3.

Aliquotieren ist nicht notwendig bei -20°C Lagerung

*** 20ul-Größen enthalten 0.1% BSA

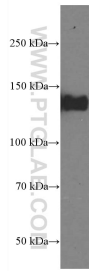
For technical support and original validation data for this product please contact:

T: 1 (888) 4PTGLAB (1-888-478-4522) (toll free in USA), or 1(312) 455-8498 (outside USA)

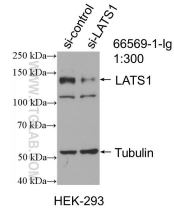
E: proteintech@ptglab.com
W: ptglab.com

This product is exclusively available under Proteintech Group brand and is not available to purchase from any other manufacturer.

Ausgewählte Validierungsdaten



HepG2 cells were subjected to SDS PAGE followed by western blot with 66569-1-Ig (LATS1 antibody) at dilution of 1:2000 incubated at room temperature for 1.5 hours.



WB result of LATS1 antibody (66569-1-Ig; 1:300; incubated at room temperature for 1.5 hours) with sh-Control and sh-LATS1 transfected HepG2 cells.