

Nur für Forschungszwecke

TLR5 Monoklonaler Antikörper

Katalog-Nr.:66570-1-Ig



Allgemeine Informationen

Katalog-Nr.: 66570-1-Ig	GenBank-Zugangsnummer: BC109119	Reinigungsmethode: Protein-G-Reinigung
Größe: 150ul, Konzentration: 1500 µg/ml von7100 Nanodrop und 1000 µg/ml durch die Bradford-Methode mit BSA als Standard;	GeneID (NCBI): toll-like receptor 5	CloneNo.: 4B3D2
Wirt: Maus	Vollständiger Name: toll-like receptor 5	Empfohlene Verdünnungen: WB 1:1000-1:6000 IF 1:400-1:1600
Isotyp: IgG1	Berechnete Masse: 858 aa, 98 kDa	
Immunogen Katalognummer: AG13840	Beobachtete Masse: 100 kDa	

Anwendungen

Geprüfte Anwendungen: IF, WB, ELISA	Positivkontrollen:
Getestete Reaktivität: Hausschwein, Human, Maus, Ratte	WB : A549-Zellen, HeLa-Zellen, Rattenmilzgewebe, RAW 264.7-Zellen, THP-1-Zellen
	IF : THP-1-Zellen,

Hintergrundinformationen

TLR5 belongs to the Toll-like receptor family which are important in the innate immune response to pathogens. TLRs are highly conserved from Drosophila to humans and share structural and functional similarities. TLR5 is known to recognize bacterial flagellin from invading mobile bacteria. TLR5 acts via MYD88 and TRAF6, leading to NF-kappa-B activation, cytokine secretion and the inflammatory response. Mutations in TLR5 gene have been associated with both resistance and susceptibility to systemic lupus erythematosus, and susceptibility to Legionnaire disease.

Lagerung

Lagerungsbedingungen:
Bei -20°C lagern. Nach dem Versand ein Jahr lang stabil
Lagerungspuffer:
PBS mit 0.02% Natriumazid und 50% Glycerin pH 7.3.
Aliquotieren ist nicht notwendig bei -20°C Lagerung

*** 20ul-Größen enthalten 0.1% BSA

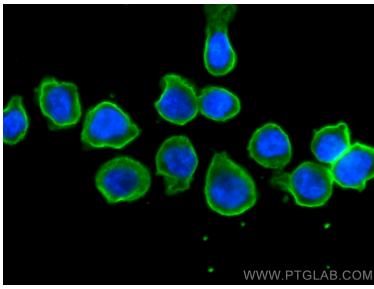
For technical support and original validation data for this product please contact:

T: 1 (888) 4PTGLAB (1-888-478-4522) (toll free
in USA), or 1(312) 455-8498 (outside USA)

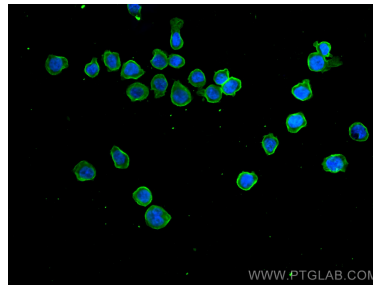
E: proteintech@ptglab.com
W: ptglab.com

This product is exclusively available under Proteintech Group brand and is not available to purchase from any other manufacturer.

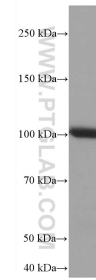
Ausgewählte Validierungsdaten



Immunofluorescent analysis of (4% PFA) fixed THP-1 cells using TLR5 antibody (66570-1-Ig, Clone: 4B3D2) at dilution of 1:800 and CoraLite®488-Conjugated AffiniPure Goat Anti-Mouse IgG(H+L).



Immunofluorescent analysis of (4% PFA) fixed THP-1 cells using TLR5 antibody (66570-1-Ig, Clone: 4B3D2) at dilution of 1:800 and CoraLite®488-Conjugated AffiniPure Goat Anti-Mouse IgG(H+L).



A549 cells were subjected to SDS PAGE followed by western blot with 66570-1-Ig (TLR5 antibody) at dilution of 1:3000 incubated at room temperature for 1.5 hours.