

Nur für Forschungszwecke

Beta Galactosidase Monoklonaler Antikörper

Katalog-Nr.:66586-1-Ig



Allgemeine Informationen

Katalog-Nr.: 66586-1-Ig	GenBank-Zugangsnummer: BC007493	Reinigungsmethode: Protein-G-Reinigung
Größe: 150ul , Konzentration: 1000 µg/ml durch die Bradford-Methode mit BSA als Standard;	GeneID (NCBI): 2720	CloneNo.: 4F4F4
Wirt: Maus	Vollständiger Name: galactosidase, beta 1	Empfohlene Verdünnungen: WB 1:5000-1:50000 IHC 1:250-1:1000 IF 1:50-1:500
Isotyp: IgG1	Berechnete Masse: 76 kDa	
Immunogen Katalognummer: AG8069	Beobachtete Masse: 64-66 kDa, 76-85 kDa	

Anwendungen

Geprüfte Anwendungen: IF, IHC, WB, ELISA	Positivkontrollen: WB : LNCaP-Zellen, A549-Zellen, HEK-293-Zellen, HeLa-Zellen, HepG2-Zellen, Jurkat-Zellen, K-562-Zellen
Getestete Reaktivität: Human, Maus, Ratte	IHC : humanes Nierengewebe,
Hinweis-IHC: Antigendemaskierung mit TE-Puffer pH 9,0 empfohlen. (*) Wahlweise kann die Antigendemaskierung auch mit Citratpuffer pH 6,0 erfolgen.	IF : HepG2-Zellen,

Hintergrundinformationen

GLB1(Beta-galactosidase) is also named as ELNR1 or Lactase. It cleaves beta-linked terminal galactosyl residues from gangliosides, glycoproteins, and glycosaminoglycans. This protein is identical to the elastin-binding protein (EBP), a major component of the nonintegrin cell surface receptor complex expressed in fibroblasts, smooth muscle cells, chondroblasts, leukocytes, and certain cancer cell types. Defects in GLB1 are the cause of GM1-gangliosidosis type 1 (GM1G1), GM1-gangliosidosis type 2 (GM1G2), GM1-gangliosidosis type 3 (GM1G3) and mucopolysaccharidosis type 4B (MPS4B). GLB1 is synthesized as an 85-kDa precursor that is C-terminally processed into a 64-66 kDa mature form and the released ~20-kDa proteolytic fragment was thought to be degraded (PMID: 10744681). GLB1 has 3 isoforms with MW of 76 kDa, 73 kDa and 61 kDa.

Lagerung

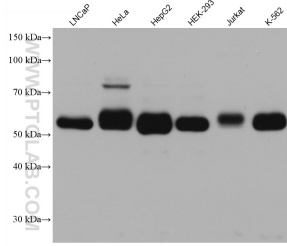
Lagerungsbedingungen:
Bei -20°C lagern. Nach dem Versand ein Jahr lang stabil
Lagerungspuffer:
PBS mit 0.02% Natriumazid und 50% Glycerin pH 7.3.
Aliquotieren ist nicht notwendig bei -20°C Lagerung

*** 20ul-Größen enthalten 0.1% BSA

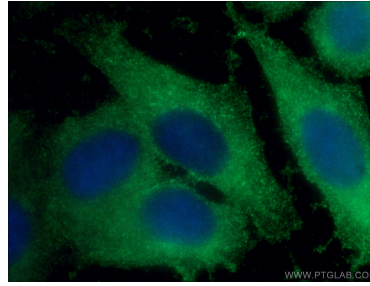
For technical support and original validation data for this product please contact:
T: 1 (888) 4PTGLAB (1-888-478-4522) (toll free in USA), or 1(312) 455-8498 (outside USA) E: proteintech@ptglab.com W: ptglab.com

This product is exclusively available under Proteintech Group brand and is not available to purchase from any other manufacturer.

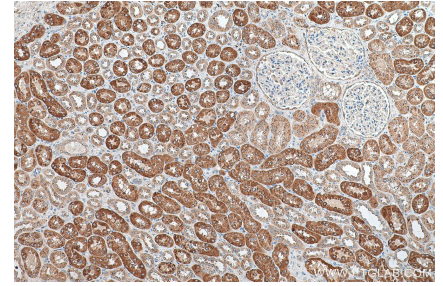
Ausgewählte Validierungsdaten



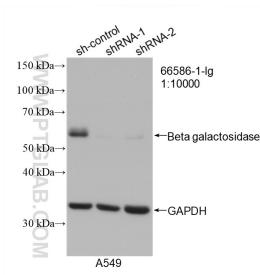
Various lysates were subjected to SDS PAGE followed by western blot with 66586-1-Ig (Beta Galactosidase antibody) at dilution of 1:20000 incubated at room temperature for 1.5 hours.



Immunofluorescent analysis of (-20°C Ethanol) fixed HepG2 cells using 66586-1-Ig (Beta galactosidase antibody) at dilution of 1:100 and Alexa Fluor 488-Conjugated AffiniPure Goat Anti-Mouse IgG(H+L).



Immunohistochemical analysis of paraffin-embedded human kidney tissue slide using 66586-1-Ig (Beta Galactosidase antibody) at dilution of 1:500 (under 10x lens). Heat mediated antigen retrieval with Tris-EDTA buffer (pH 9.0).



WB result of Beta Galactosidase antibody (66586-1-Ig; 1:10000; incubated at room temperature for 1.5 hours) with sh-Control and sh-Beta Galactosidase transfected A549 cells.